



Connells

Charterhouse Road
Coventry



Property Description

This mid terrace property is situated in the popular location of Stoke and briefly comprises; ground floor lounge, dining room, fitted kitchen, fitted shower room and two first floor bedrooms. Externally there is a rear garden..

Approach

Front door.

Entrance Hall

Radiator, laminate flooring.

Lounge

14' 4" x 10' 7" (4.37m x 3.23m)

Double glazed window to the rear elevation, radiator, understairs cupboard and laminate flooring.

Dining Room

10' 2" x 8' 1" (3.10m x 2.46m)

Double glazed window to the front elevation, gas fire and laminate flooring.

Fitted Kitchen

8' 4" x 6' 4" (2.54m x 1.93m)

Wall and base mounted units incorporating an inset single drainer stainless steel sink unit with work surfaces and tiled splashbacks over. Electric oven and electric hob, plumbing for washing machine, space for domestic appliance, double glazed window to the side elevation and a double glazed door opening onto rear garden.

Fitted Shower Room

Tiled, comprising shower cubicle, wash hand basin set into vanity unit, toilet, radiator and double glazed window to the rear elevation

First Floor Landing

Doors to;

Bedroom One

11' 8" x 11' 3" (3.56m x 3.43m)

Double glazed window to the rear elevation, radiator and laminate flooring.

Bedroom Two

11' 8" x 10' 3" (3.56m x 3.12m)

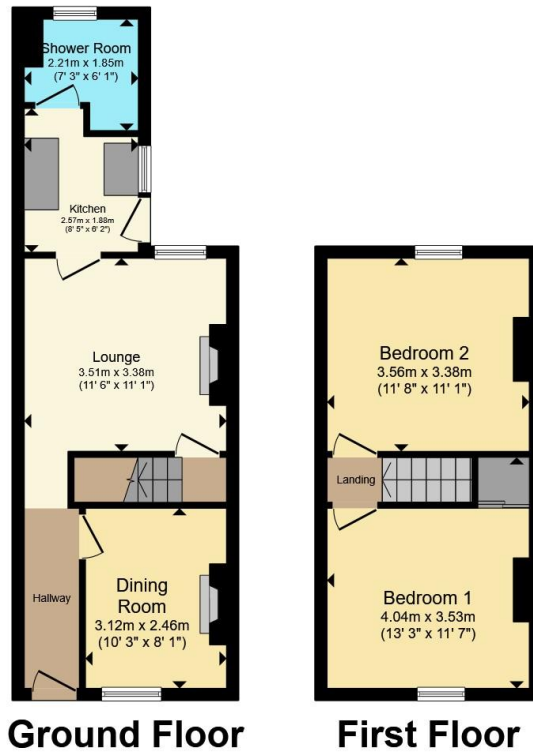
Double glazed window to the front elevation, radiator and laminate flooring.

Outside

Rear Garden

Patio area beyond being laid to lawn with gated rear access.





Total floor area 61.4 m² (661 sq.ft.) approx

This floor plan is for illustrative purposes only. It is not drawn to scale. Any measurements, floor areas (including any total floor area), openings and orientation are approximate. No details are guaranteed, they cannot be relied upon for any purpose and they do not form part of any agreement. No liability is taken for any error, omission or misstatement. A party must rely upon its own inspection(s). Powered by www.propertybox.io



To view this property please contact Connells on

T 02476 553 093
E coventry@connells.co.uk

38 New Union Street
 COVENTRY CV1 2HN

EPC Rating: D Council Tax
 Band: A

view this property online connells.co.uk/Property/COV317970

Tenure: Freehold



1. MONEY LAUNDERING REGULATIONS Intending purchasers will be asked to produce identification documentation at a later stage and we would ask for your co-operation in order that there will be no delay in agreeing the sale. 2. These particulars do not constitute part or all of an offer or contract. 3. The measurements indicated are supplied for guidance only and as such must be considered incorrect. Potential buyers are advised to recheck measurements before committing to any expense. 4. We have not tested any apparatus, equipment, fixtures, fittings or services and it is in the buyers interest to check the working condition of any appliances.

Connells Residential is registered in England and Wales under company number 1489613, Registered Office is Cumbria House, 16-20 Hockliffe Street, Leighton Buzzard, Bedfordshire, LU7 1GN. VAT Registration Number is 500 2481 05.

See all our properties at www.connells.co.uk | www.rightmove.co.uk | www.zoopla.co.uk

Property Ref: COV317970 - 0012