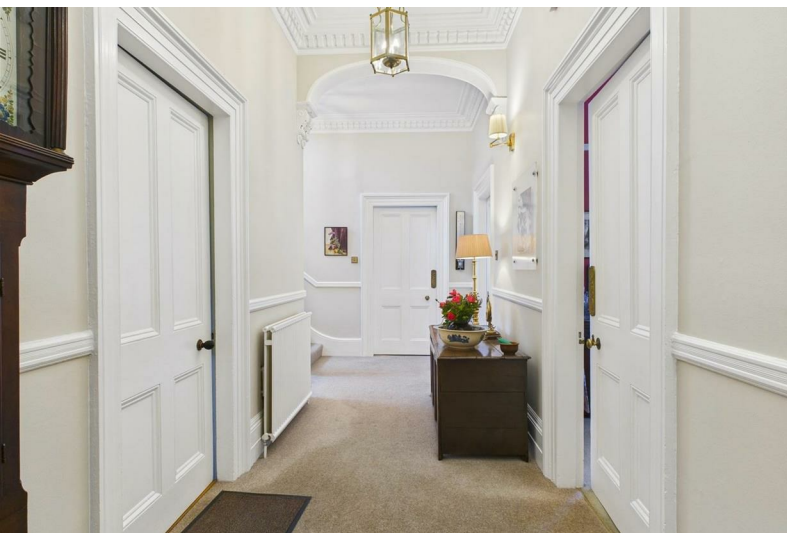




Barton House 11 Manchester Road

Buxton, SK17 6SE

£795,000



Barton House 11 Manchester Road

Buxton, SK17 6SE

Tenure Freehold Council Tax Band G



Barton House is a most impressive Grade II listed residence, believed to have been designed by the architect Henry Currey and constructed in the 19th century. The property is tastefully presented throughout and retains many character features including fireplaces, decorative ceiling cornices and covings, servants bells, shutters and an ornate verandah at the rear overlooking the rear garden. Barton House offers versatile accommodation arranged over four floors which will appeal to a variety of purchasers and is currently arranged with five bedrooms, three bathrooms, three reception rooms and extensive rooms to the lower ground level. The property stands in a substantial plot with a detached garage, mature gardens and driveway parking for a number of vehicles and is well situated within easy reach of local amenities including the town centre, The Pavilion Gardens, The Opera House and the railway station.

DIRECTIONS:

From our Buxton office turn right and turn left at the roundabout into Manchester Road. Follow the road around to the right and Barton House can be found after a short while on the left hand side where our For Sale board has been erected.

LOCATION:

The Roman Spa town of Buxton, famous for its mineral and spring water sits amongst some of the most beautiful countryside in England, being on the edge of the Peak District National Park, whilst being accessible to the cities of Manchester, Sheffield and Derby. The town boasts magnificent location architecture, some dating back to the early 17th century, including the Crescent, a superb example of the Georgian period, built around 1780 for William Cavendish, the Duke of Devonshire, by John Carr of York. The annual Buxton Festival attracts visitors from across the world, while many visit the town to sample the mineral and spring water, to stroll through The Pavilion Gardens and enjoy the surrounding hills and countryside. There is a direct train link from Buxton into Stockport and Manchester, while Manchester Airport is approximately 25 miles from the town.

GROUND FLOOR

Entrance Vestibule

Glazed entrance door, frosted glazed door and frosted glazed windows to entrance hall, wall light point, dado rail, ceiling coving and ceiling rose.

Entrance Hall

Ceiling coving, dado rail, decorative mouldings and archways. Three wall light points, two double radiators, sash window to front and door to stairs to lower ground floor. Staircase to first floor with spindled handrail.

W.C.

With tiled flooring and fitted with a suite comprising vanity wash basin with cupboards under and tiled splash back and low level w.c. with tiled splash back. Double radiator, wall light point, arched sash window to rear and leaded stained glass windows to the entrance hall.

Kitchen

12'8" x 12'5" (3.86m x 3.78m)

Fitted with a Chalon kitchen comprising a range of base and wall mounted cupboards with granite work surfaces incorporating a two bowl Belfast sink with mixer tap. Free standing circular island with storage below. Gas Aga used for

cooking and hot water, set in a tiled recess with a decorative mantle over. Miele oven, Miele two ring ceramic hob and integrated Miele dishwasher. Integrated freezer and integrated refrigerator. Ceiling coving, wooden flooring and sash window to front.

Dining Room

15'0" x 13'5" (4.57m x 4.09m)

Featuring a decorative marble and cast iron fireplace with slate hearth and open grate. Picture rail, ceiling coving, two double radiators and two wall light points. Double doors to lounge and arched glazed French doors and windows to the verandah at the rear with views across the garden.

Lounge

19'1" x 13'4" (5.82m x 4.06m)

Featuring a decorative marble fireplace with slate inset and hearth incorporating a living flame coal and log effect gas fire. Ceiling coving, picture rail, wall light point and two double radiators. Arched glazed French doors and windows to the verandah at the rear with views across the garden.

Sitting Room

19'4" x 12'9" (5.89m x 3.89m)

Featuring a decorative marble fireplace with a log burning stove set on the hearth. Built in book cases with cupboards and shelving, ceiling coving, picture rail, two double radiators and sash window to front.

LOWER GROUND FLOOR

Hall

Stone floor, double radiator, walk in storage cupboard and wall mounted servants bells.

W.C.

With low level w.c. and wall mounted washbasin. Tiled floor and sash window to front.

Inner Hall

Stone floor, fitted cupboards, double radiator, ceiling pulley clothes airer and wall mounted servants bell. Frosted glazed door to outside.

Utility Room

12'3" x 10'7" (3.73m x 3.23m)

Fitted with a range of base and wall mounted cupboards with work surfaces incorporating a 1 ½ bowl single drainer sink unit with mixer tap. Cast iron fireplace, original style radiator, tiled floor and sash window to front. Worcester boiler, plumbing for washing machine, space for tumble dryer and space for refrigerator.

Studio

14'5" x 11'9" (4.39m x 3.58m)

Walk in storage cupboard, double radiator and sash window to rear with shutters.

Office

12'9" x 12'5" (3.89m x 3.78m)

Decorative fireplace with stone hearth and open grate. Built in cupboards and shelving to recesses. Double radiator and original style radiator. Sash window to rear with shutters and with built in cupboards and drawers.

Tel: 01298 24383

Workshop

8'3" x 5'9" (2.51m x 1.75m)

Stone floor, heated towel rail and fitted work bench with cupboards under.

Bathroom

12'6" x 11'0" (3.81m x 3.35m)

Decorative fireplace with open grate, heated towel rail and double radiator. Roll edge bath, sash window to front with shutters, built in cupboards and shelving.

FIRST FLOOR

Landing

Ceiling coving, dado rail, double radiator and sash window to front. Stairs to second floor.

Bedroom One

14'8" x 14'1" (4.47m x 4.29m)

With a range of built in wardrobes and cupboards, two wall light points and two double radiators. Three arched sash windows to the rear with shutters and sash window to the rear with shutters. With views across the garden.

En Suite Shower Room

With tiled walls and floor and under floor heating. Fitted with a white suite comprising wall mounted wash basin and low level w.c. Double shower area with shower screen, shower and tiled and illuminated recess. Extractor, heated towel rail and mirror fronted inset cupboard.

Bedroom Two

11'10" x 10'11" (3.61m x 3.33m)

Ceiling coving, double radiator and sash window to front.

En Suite Shower Room

With tiled walls and floor and under floor heating. Fitted with a white suite comprising curved tiled and glazed shower cubicle with sliding doors and shower, vanity wash basin and low level wc. Heated towel rail and extractor.

Bedroom Three

15'11" x 12'11" (4.85m x 3.94m)

Picture rail, ceiling coving, double radiator, under stairs cupboard and sash window to front.

Bedroom Four

13'3" x 9'10" (4.04m x 3.00m)

Featuring a decorative fireplace and hearth. With ceiling coving, double radiator and sash window to rear with shutters and views across the garden.

Shower Room

With tiled walls and floor and under floor heating. Fitted with a white suite comprising vanity washbasin with drawers under and low level w.c. Double shower area with shower, shower screen and glazed door and with illuminated and tiled recess. Heated towel rail, shaver point, extractor and sash window to side.

SECOND FLOOR

Landing

Wall light point, recessed shelving and frosted glazed skylight window. Sliding door leading to loft area housing hot water tanks.

Bedroom Five

16'5" x 8'10" (5.00m x 2.69m)

Built in wardrobe, double radiator, window to side and three wall light points.

OUTSIDE

Detached Garage

17'4" x 15'10" (5.28m x 4.83m)

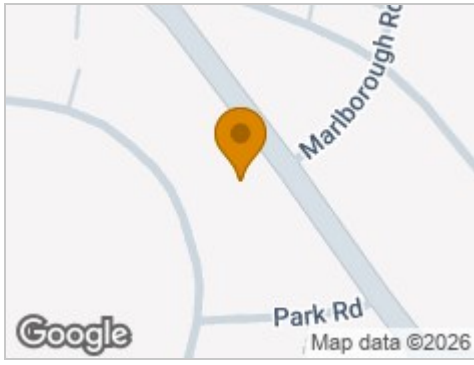
With remote control up and over door to front. With light and power.

GARDEN

The property stands in a substantial plot and is approached at the front by a driveway providing ample space for parking and turning. There is also a garden area with gravel, borders, plants and raised vegetable beds. There is access at the side of the garage to the rear garden where there is an extensive lawn, a stepping stone pathway, gravel areas, a pond and a water feature. There are many mature shrubs and trees, timber trellis and a timber shed and gates providing access to Park Road.



Road Map



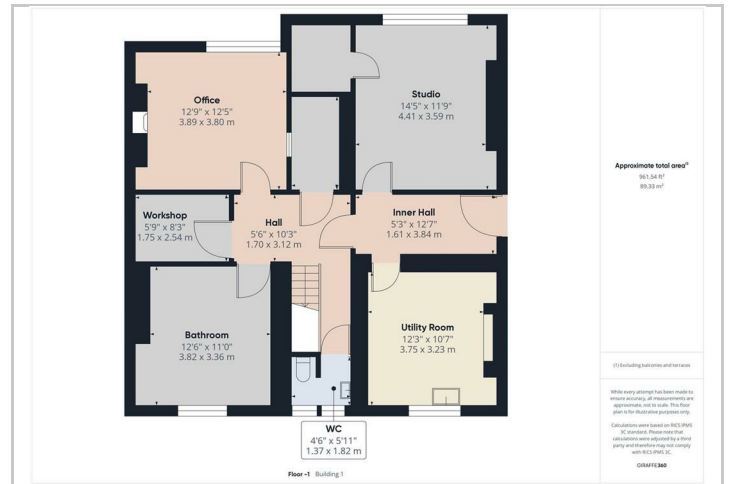
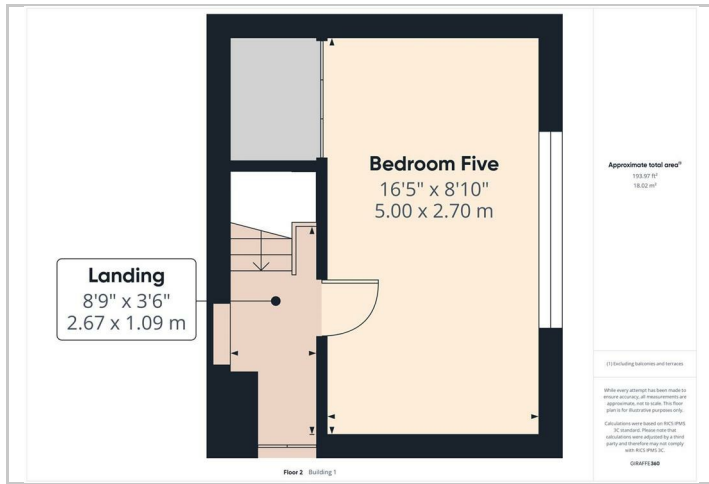
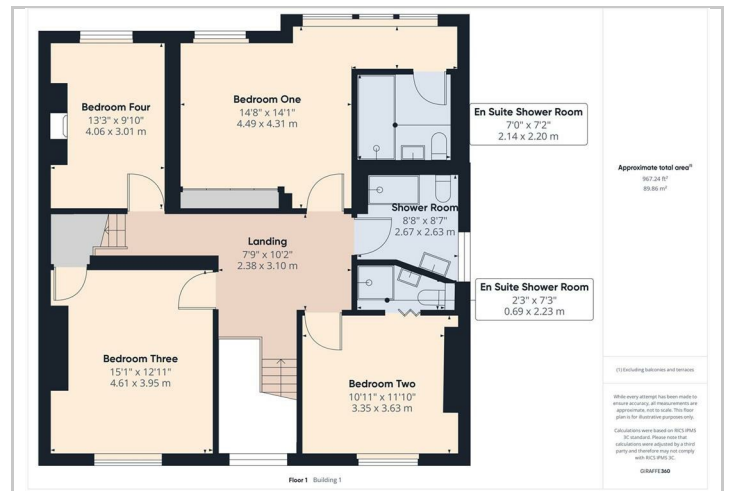
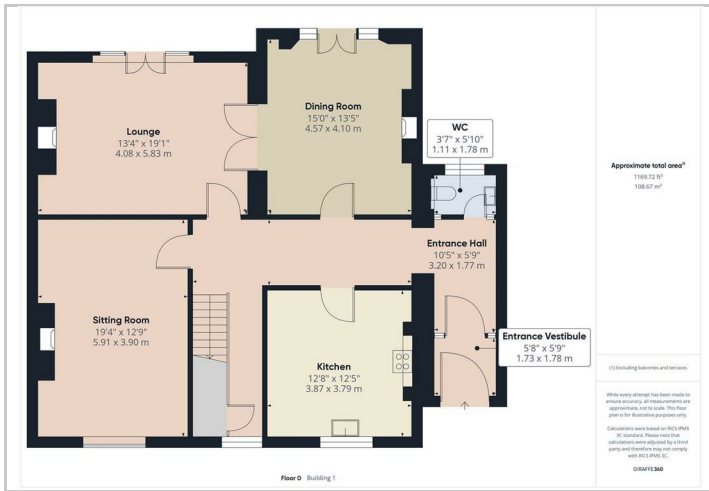
Hybrid Map



Terrain Map



Floor Plans



Viewing

Please contact our Mellors Estate Agents Office on 01298 24383 if you wish to arrange a viewing appointment for this property or require further information.

Energy Efficiency Graph

Important Notice

Mellors Estate Agents, their solicitors and joint agents give notice that:

1. They are not authorised to make or give any representations or warranties in relation to the property either here or elsewhere, either on their own behalf or on behalf of their client or otherwise. They assume no responsibility for any statement that may be made in these particulars. These particulars do not form part of any offer or contract and must not be relied upon as statements or representation of fact.
2. Any areas, measurements or distances are approximate. The text, photographs and plans are for guidance only and are not necessarily comprehensive. It should not be assumed that the property has all necessary planning building regulation or other consents and Mellors Estate Agents have not tested any services, equipment or facilities. Purchasers must satisfy themselves by inspection or otherwise.

1 Grove Parade, Buxton, Derbyshire, SK17 6AJ

Tel: 01298 24383 Email: info@mellors.org.uk www.mellors.org.uk