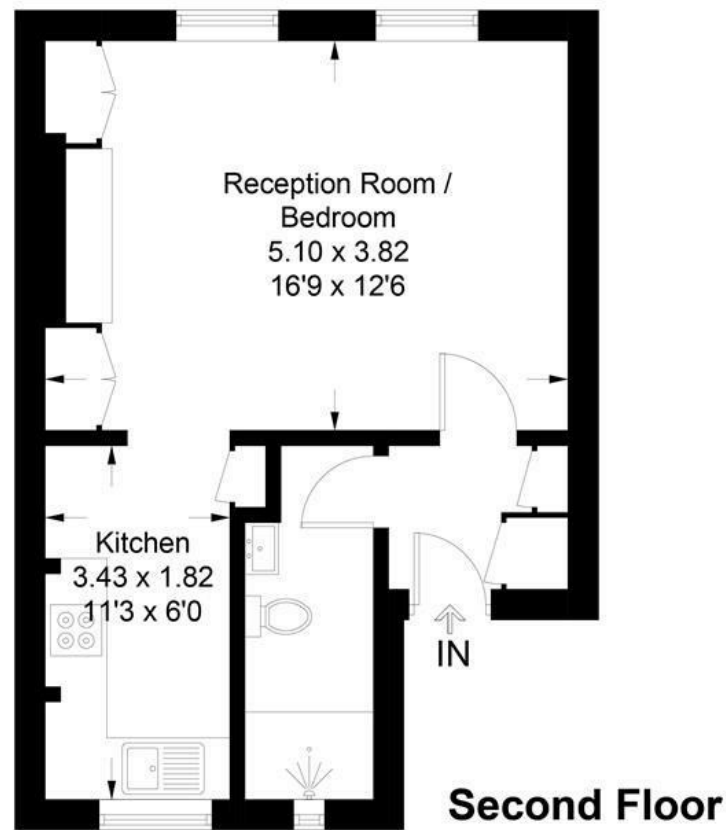


Disraeli Road, London, SW15

Approximate Gross Internal Area = 34.0 sq m / 366 sq ft



All measurements are in accordance to the RICS Code Of Measuring Practice. Measurements are approximate & only for illustrative purposes.
© Property Visual Ltd - info@propertyvisual.com - www.propertyvisual.com



DISCLAIMER•These particulars are intended to give a fair and substantially correct overall description for the guidance of intending purchasers and do not constitute an offer or part of a contract. Prospective purchasers and/or lessees ought to seek their own professional advice.
•All descriptions, dimensions, areas, references to condition and necessary permissions for use and occupation and other details are given in good faith and are believed to be correct, but any intending purchasers should not rely on them as statements or representations of fact, but must satisfy themselves by inspection or otherwise as to the correctness of each of them.
•All measurements are approximate.

Disraeli Road, Putney, SW15

A completely renovated studio apartment on the top floor of this period house in the heart of central Putney. Offered on an unfurnished basis and benefiting from being moments from Putney High Street, the accommodation comprises a studio room with built in storage, brand new separate kitchen and brand new shower room. This superb flat is ideally situated for all the amenities and transport Putney has to offer. Available now.



- STUDIO FLAT
- BRAND NEW KITCHEN
- PRIME LOCATION
- EPC TBC
- COMPLETELY REFURBISHED
- BRAND NEW SHOWER ROOM
- MOMENTS FROM HIGH STREET
- COUNCIL TAX BAND B

Per Calendar Month
£1,250 Per Calendar Month

