

Property ref: 171730

## George Street, Reading, RG1 7NT

£1,000 PCM

**HASLAM'S**  
Lettings



A very well presented first floor apartment located within walking distance of the town centre and the main line station. Reading Borough Council tax band A. Broadband/Mobile Info: Connections available. For an indication of specific speeds and supply of Broadband and Mobile, we advise applicants go to the Ofcom website Broadband and Mobile Coverage Checker.

**Available 05/09/2026**

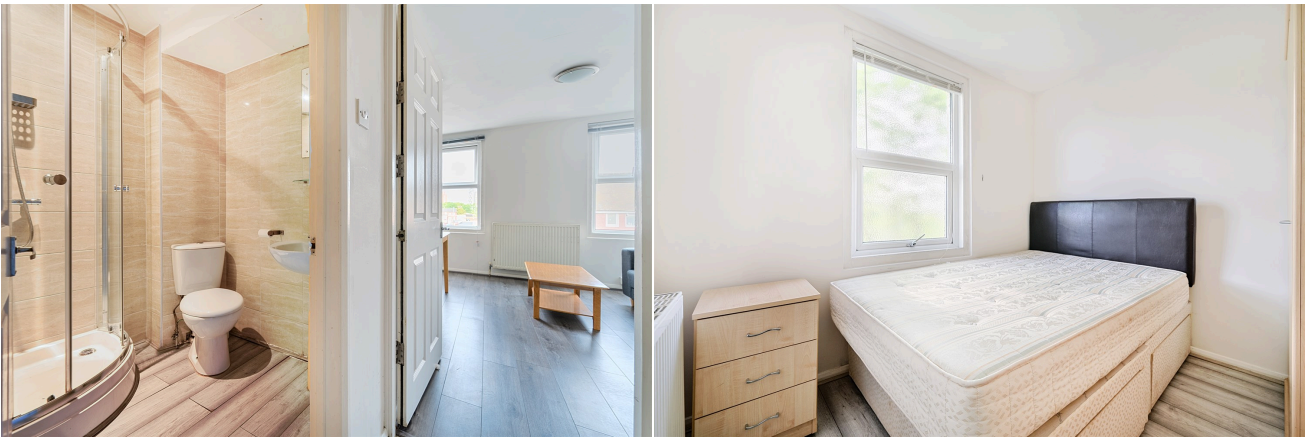
- One double bedroom; First floor (no lift)
- Fully fitted kitchen with appliances
- Shower room; Furnished
- Gas central heating; EPC rating C
- No parking
- Managed by LANDLORD

\*Fees For Assured Periodic Tenancies: when you rent a property from us you will be required to pay a sum equivalent to one weeks' rent for a holding deposit. Upon successful application, this amount will be off set against your first months' rent. You will also be required to pay a security deposit equivalent to 5 weeks' rent which will be held and protected in line with Deposit legislation. For more information about our fees please visit: [www.haslams.net](http://www.haslams.net)  
Fees for all other tenancies (Non Housing Act Tenancies / Company Lets): when you rent a property from us we will charge you a one-off fee per property. This charge is the equivalent of 15 days of the monthly rental charge (+VAT) with a minimum fee of £450 (inc.VAT) up to a maximum of £650 (inc.VAT). Other fees may apply depending on your circumstances.

**0118 960 1055**

**[lettings@haslams.net](mailto:lettings@haslams.net) [www.haslams.net](http://www.haslams.net)**

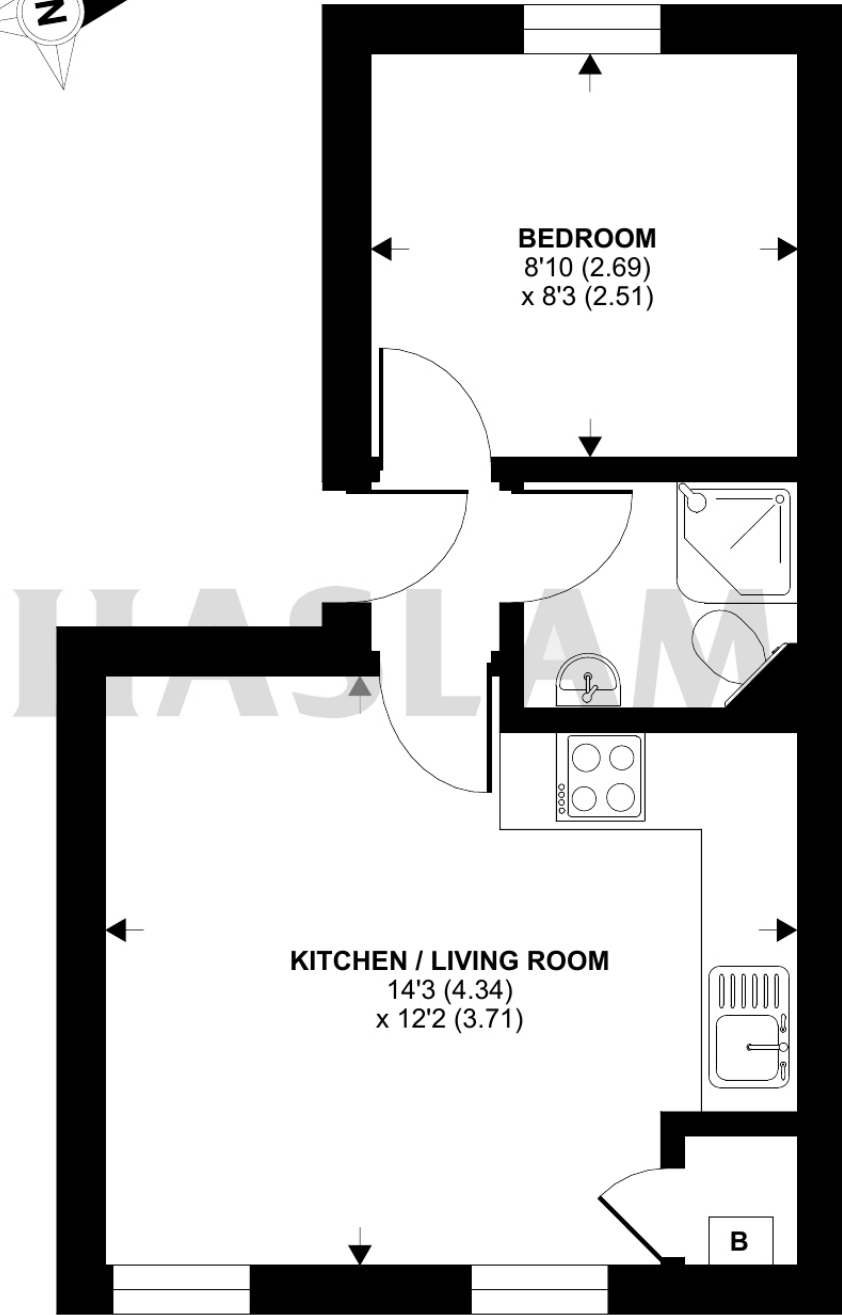
**Haslams Estate Agents Ltd, 159 Friar Street, Reading, Berkshire, RG1 1HE**



# George Street, Reading, RG1

Approximate Area = 287 sq ft / 26.7 sq m

For identification only - Not to scale



**FIRST FLOOR**

 Floor plan produced in accordance with RICS Property Measurement 2nd Edition, Incorporating International Property Measurement Standards (IPMS2 Residential). © n̄checom 2025. Produced for Haslamss. REF: 1289983