



## Huntington House, Princess Street, Bolton

£685 PCM

This stylish one-bedroom top-floor apartment is ideally located in the heart of Bolton town centre (BL1 1EJ), offering modern city living with everything you need right on your doorstep.

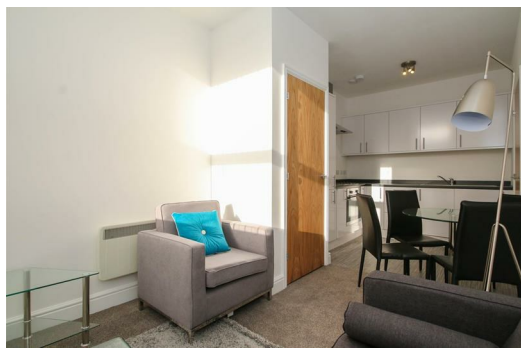
Fully furnished throughout, the apartment features a bright open-plan living and kitchen area, complete with integrated appliances, creating the perfect space to relax or entertain. The spacious double bedroom is complemented by a contemporary tiled bathroom finished to a modern standard.

Situated just off the popular Bradshawgate, residents can enjoy Bolton's fantastic range of shops, restaurants, cafés and leisure facilities, all within walking distance. Bolton Train Station is only a short stroll away, providing excellent connections to Manchester and the surrounding areas, while regular bus services and convenient road links make commuting simple.

Additional benefits include lift access within the building and an allocated parking space.

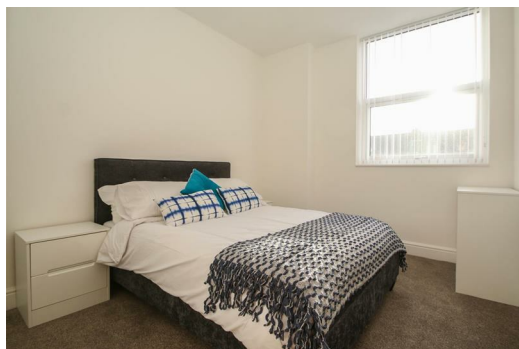
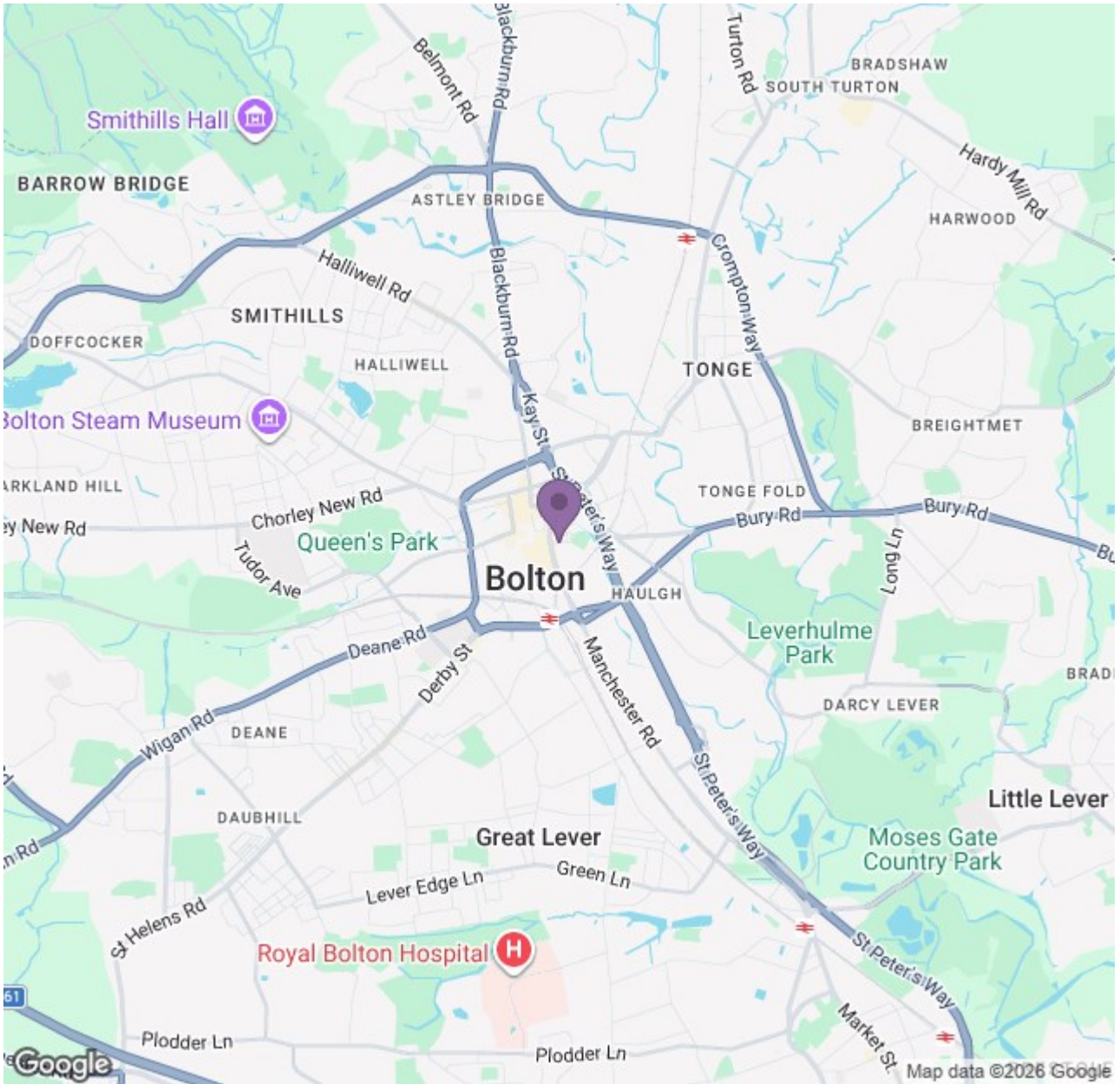
Perfect for professionals looking for a modern, move-in-ready home in a highly convenient location. Contact us today to arrange your viewing.

Please note: Photographs are representative of a show apartment and fixtures, fittings, and layouts may vary.



# Ascend

Built on higher standards



Energy Efficiency Rating		Environmental Impact (CO <sub>2</sub> ) Rating	
Current	Target	Current	Target
65	68	67	69

# Ascend

Built on higher standards