

HUNTERS®

HERE TO GET *you* THERE



Bathgate Square, Town End Farm, Sunderland £134,950

Council Tax: A

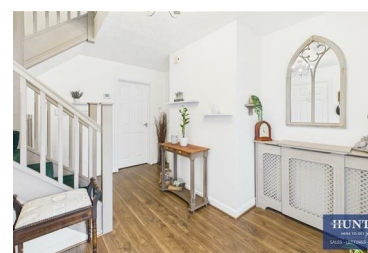
Tenure: Freehold



• PLEASE VIEW VIRTUAL TOUR & FLOORPLAN • FOUR BEDROOM • SEMI-DETACHED • GARDENS TO FRONT AND REAR • COUNCIL TAX BAND A • FREEHOLD • EPC RATING TBC •

Situated on a charming pedestrianised walkway, this well-presented house on Bathgate Square in Town End Farm, Sunderland, is an excellent opportunity for first-time buyers and families alike. Spanning an impressive 1060 square feet, this Semi detached house has ample space for a growing family. The property boasts a thoughtful layout that includes two inviting reception rooms, four comfortable bedrooms, and a modern bathroom.

Upon entering, you are welcomed by a reception hall that leads to a spacious lounge and adjoining dining room while the fitted kitchen is designed for



11b Sea Road, Fulwell, Sunderland, SR6 9BP
Tel: 0191 594 7788 Email: sunderland@hunters.com
<https://www.hunters.com>

