

CANALSIDE WALK, W2



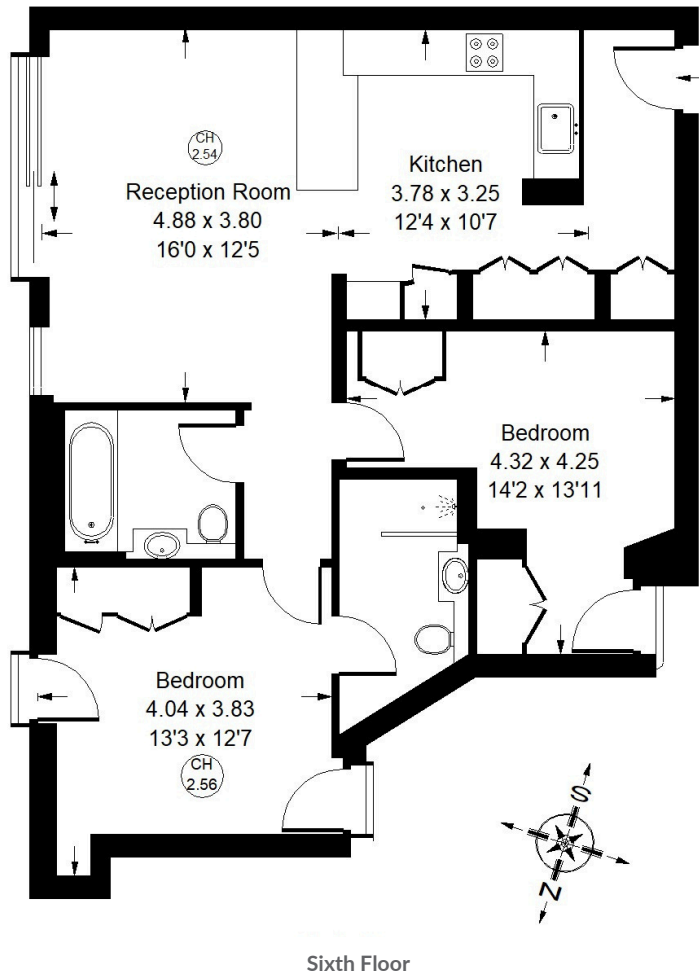


Canalside Walk, W2

Positioned on the sixth floor of a sought-after canalside development in the heart of Paddington Basin, this beautifully presented two-bedroom apartment offers contemporary living with the added benefits of a communal roof top observatory garden, secure parking and a daytime concierge service. The apartment features a bright and spacious open-plan reception room with floor-to-ceiling windows, creating an abundance of natural light. The modern kitchen is thoughtfully designed with integrated appliances and ample storage, making it ideal for both everyday living and entertaining. The principal bedroom benefits from fitted wardrobes and an en-suite bathroom, while the second double bedroom is well-proportioned and served by a stylish family bathroom. Finished to a high standard throughout, the property offers generous living space, excellent storage, comfort cooling, and a practical layout suited to professionals, couples or investors. Residents enjoy the convenience of a daytime concierge, lift access and a secure allocated parking space, adding to the comfort and ease of modern city living.



Approx. Gross Internal Area
= 76 sq m / 818 sq ft



Canalside Walk, W2 - Leasehold

Local Authority - City of Westminster

Paddington Basin has become one of Central London's most desirable waterside destinations, offering a unique blend of peaceful canal-side surroundings and outstanding connectivity. A wide selection of cafés, restaurants and leisure amenities are moments from the doorstep, while Hyde Park, Little Venice and Marylebone are all within easy walking distance.

- Two Double Bedrooms
- Day Concierge/Lift Access
- Secure Allocated Parking Space
- Communal Roof Top Garden
- EPC Rating = B
- Council Tax Band = E



Whilst every attempt has been made to ensure the accuracy of the floor plan, measurements are approximate and not to scale. No guarantee is given on the total square footage of the property quoted on the plan. Figures given are for guidance. Plan is for illustration purposes only, not to be used for valuations.