



Snowdrop Way, West Meadows, Cramlington, NE23 8FQ

Asking Price: £200,000

Harpers | POWERED BY **exp**™ UK
property people

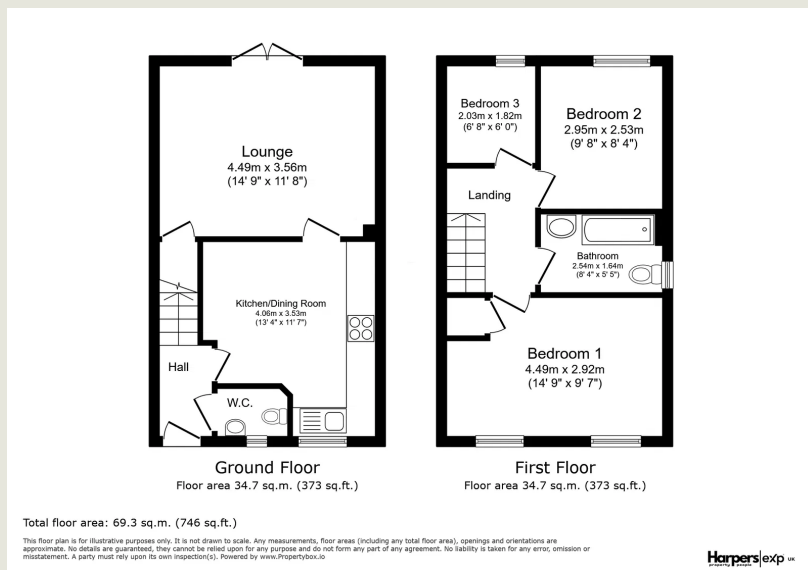
Bedrooms: 3 | Bathrooms: 1 | Receptions: 2

Located on a popular modern development on the Cramlington borders, this attractive three bedroom end of terrace home offers contemporary living, excellent outdoor space and the reassurance of over 6 years remaining on the NHBC warranty. The accommodation includes three well-proportioned bedrooms, a spacious rear aspect living room as well as a modern eat-in kitchen ideal for everyday family life. A ground floor WC adds further convenience. Externally, the property benefits from a good-sized enclosed rear garden, perfect for relaxing or entertaining, along with a double driveway to the front providing excellent off-street parking. Well positioned close to local amenities and transport links, this home is ideally suited to first-time buyers, young families, or those seeking a low-maintenance, move-in-ready property in a well-connected location.

- End Of Terrace Home
- Three Bedrooms
- Eat-In Kitchen
- Spacious Rear Aspect Living Room
- Ground Floor WC
- Good-Sized Enclosed Rear Garden
- Double Driveway To Front
- 6+ Years On NHBC
- Close To Local Amenities & Transport Links
- Modern Development On Cramlington Borders







Harpers Property People

80 Windsor Gardens, Bedlington, NE22 5SY

07813 673 606

ali@harpersproperty.com

<https://harpersproperty.com>