



Titchfield Terrace
Hucknall Nottingham

Titchfield Terrace Hucknall Nottingham NG15 7HL

for sale offers over
£110,000



Property Description

Situated in the centre of Hucknall, just a stone's throw from local shops, cafes, and amenities, this delightful one bedroom property offers spacious and flexible living across three floors - perfect for first-time buyers, investors, or anyone looking for a move-in ready home.

The ground floor features a welcoming lounge, a separate dining room, and a well-presented kitchen with access to the rear yard.

On the first floor, you'll find the main bedroom and a modern family bathroom, while on the second (top) floor there is a further generous room, offering privacy and versatility.

Outside, the property benefits from a low-maintenance rear yard, ideal for relaxing or entertaining

Lounge

Entered into via upvc front door with upvc double glazed window to the front elevation, radiator and giving access to:-

Lobby

Having stairs to the first floor and door into:-

Dining Room

Having upvc double glazed window to the rear, central heating radiator, understairs storage cupboard and being open to the kitchen

Kitchen

Having a range of wall and base units with worksurface over, inset stainless steel sink and drainer with mixer tap, integrated electric oven with gas hob and extractor hood over, space and plumbing for washing machine, upvc double glazed window to the rear and upvc door leading out to the garden area

First Floor

Landing Area

Having stairs to loft room

Bedroom One

Having upvc double glazed window to the front elevation, and central heating radiator

Bathroom

Fitted with a three piece suite comprising of panelled bath with mains fed shower over, low level WC and pedestal wash hand basing, heated towel rail, laminate flooring and upvc double glazed window to the rear elevation

Loft Room

Having Velux Style window to the rear

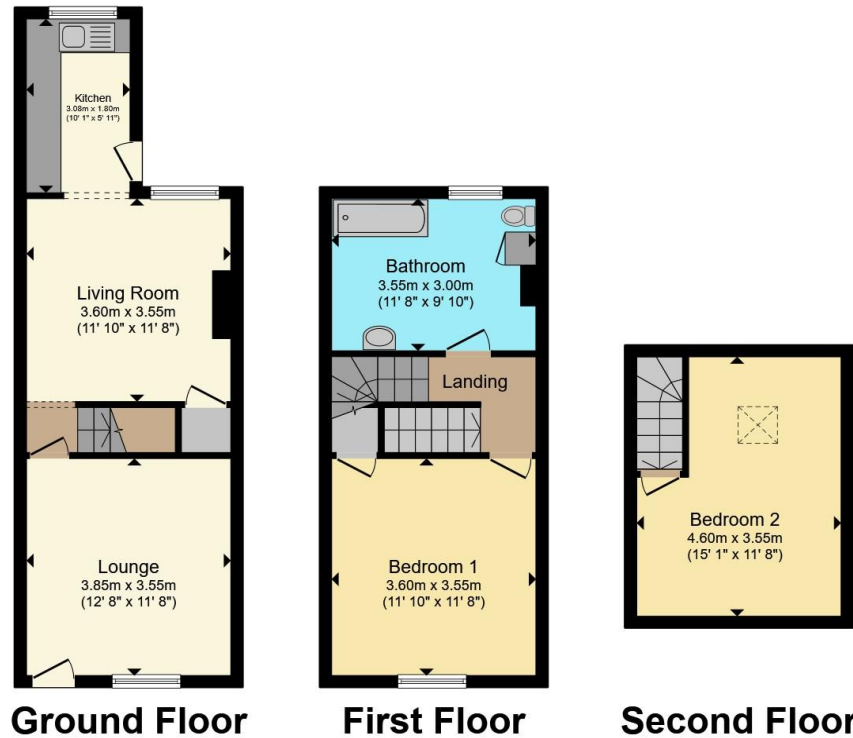
Outside

Having a enclosed rear yard with fenced boundaries, and outside tap.









Total floor area 82.1 m² (883 sq.ft.) approx

This floor plan is for illustrative purposes only. It is not drawn to scale. Any measurements, floor areas (including any total floor area), openings and orientation are approximate. No details are guaranteed, they cannot be relied upon for any purpose and they do not form part of any agreement. No liability is taken for any error, omission or misstatement. A party must rely upon its own inspection(s). Powered by www.propertybox.io



To view this property please contact Burchell Edwards on

T 0115 968 0528
E hucknall@burchelledwards.co.uk

64 High Street Hucknall
 NOTTINGHAM NG15 7AX

EPC Rating: C Council Tax
 Band: A

Tenure: Freehold

view this property online burchelledwards.co.uk/Property/HUK104840



1. MONEY LAUNDERING REGULATIONS Intending purchasers will be asked to produce identification documentation at a later stage and we would ask for your co-operation in order that there will be no delay in agreeing the sale. 2. These particulars do not constitute part or all of an offer or contract. 3. The measurements indicated are supplied for guidance only and as such must be considered incorrect. Potential buyers are advised to recheck measurements before committing to any expense. 4. We have not tested any apparatus, equipment, fixtures, fittings or services and it is in the buyers interest to check the working condition of any appliances.

Burchell Edwards is a trading name of Connells Residential which is registered in England and Wales under company number 1489613, Registered Office is Cumbria House, 16-20 Hockliffe Street, Leighton Buzzard, Bedfordshire, LU7 1GN. VAT Registration Number is 500 2481 05.

See all our properties at www.burchelledwards.co.uk | www.rightmove.co.uk | www.zoopla.co.uk

Property Ref: HUK104840 - 0004