



Hartfield Terrace
London, E3 2QS

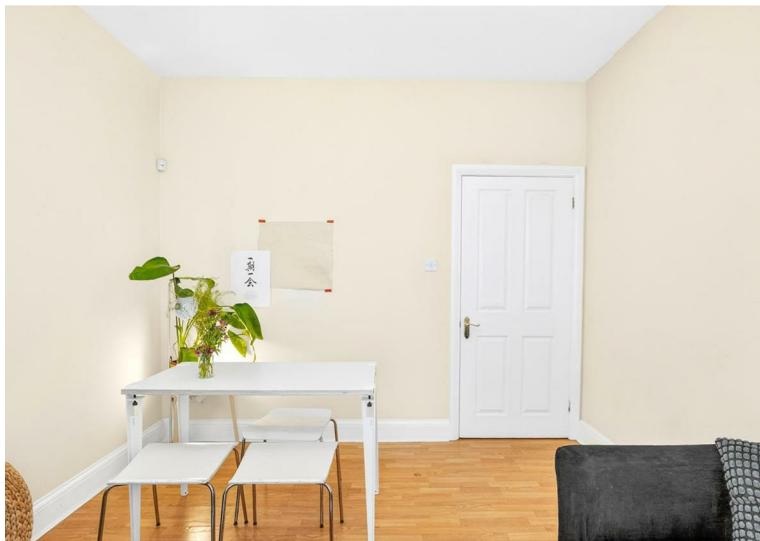
£3,500 PCM

Elms Estates are delighted to be offering to the market To Let this Three bedroom House situated just moments from Bow Road station.

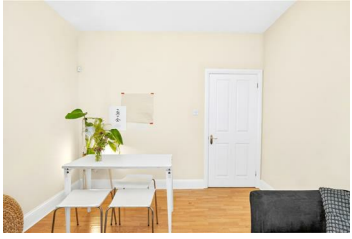
Hartfield Terrace is conveniently located directly off of Fairfield Road with multiple Bus Routes into the City, West End and beyond and is within a short walk of both Bow Road (District and Hammersmith & City) Tube Station or Bow Church (DLR) Station. For those that drive there is excellent access to the A12.

Internally the property offers good sized living accommodation, Separate kitchen, Three good size bedrooms, bathroom and Garden. The property is available 06 July 2026

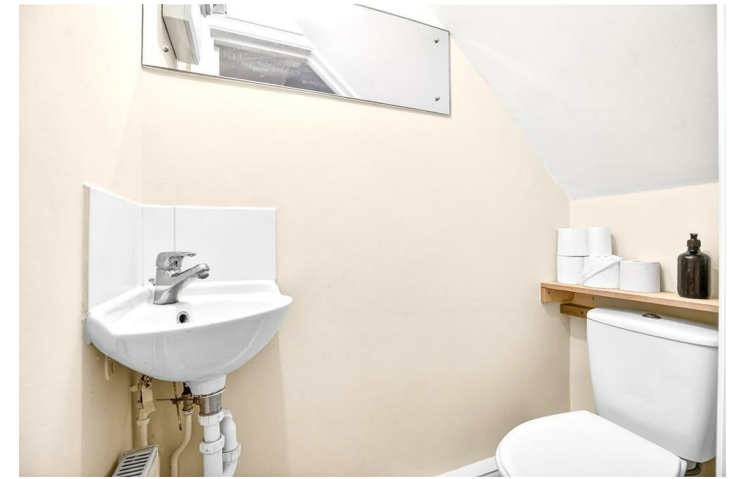
For more information or to arrange a viewing please do not hesitate to call in and speak with one of our Property Consultants. Early viewing is highly recommended in order to avoid disappointment.



Reception Room



Bedroom Three



Garden



Kitchen



Bathroom



Material Information

Deposit: £4,038.46

Length Of Tenancy: One Year

Council Tax Band: E

Bedroom One



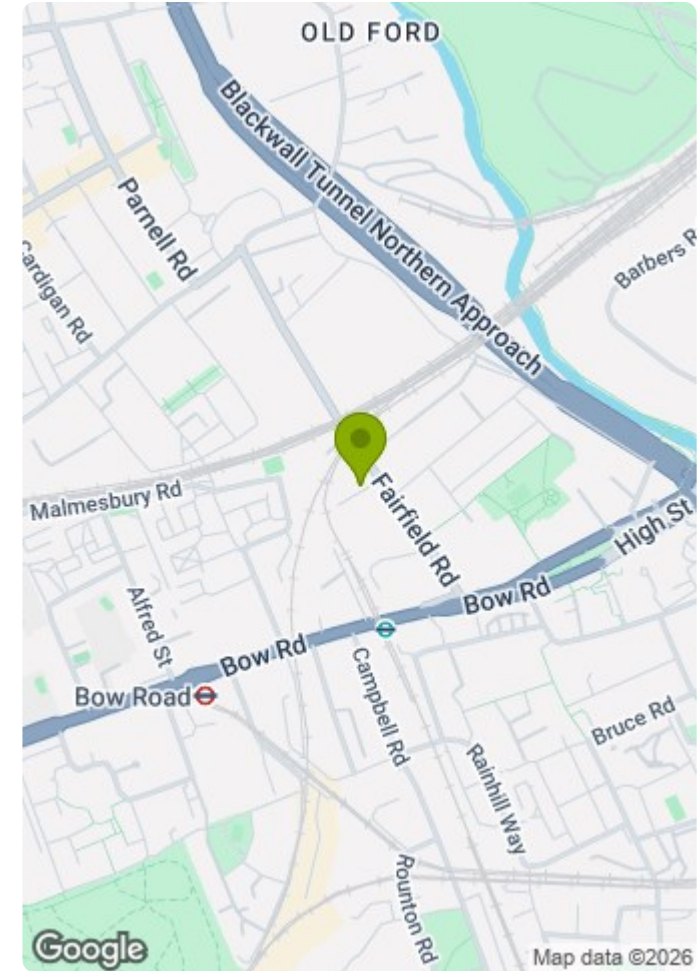
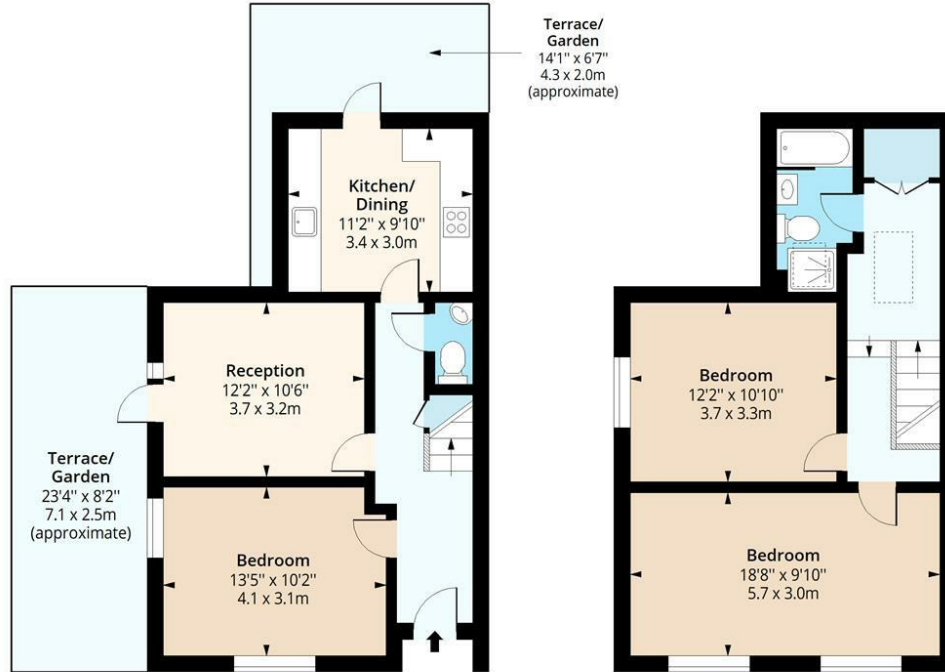
W/c

Bedroom Two



Hartfield Terrace, E3

Approx. Gross Internal Area 1008 Sq Ft - 93.64 Sq M



Ground Floor

Floor Area 506 Sq Ft - 47.01 Sq M

First Floor

Floor Area 502 Sq Ft - 46.64 Sq M



Measured according to RICS IPMS2. Floor plan is for illustrative purposes only and is not to scale. Every attempt has been made to ensure the accuracy of the floor plan shown, however all measurements, fixtures, fittings and data shown are an approximate interpretation for illustrative purposes only. 1 sq m = 10.76 sq feet.

lplplus.com

Date: 25/8/2025

