



RIDGEWAY

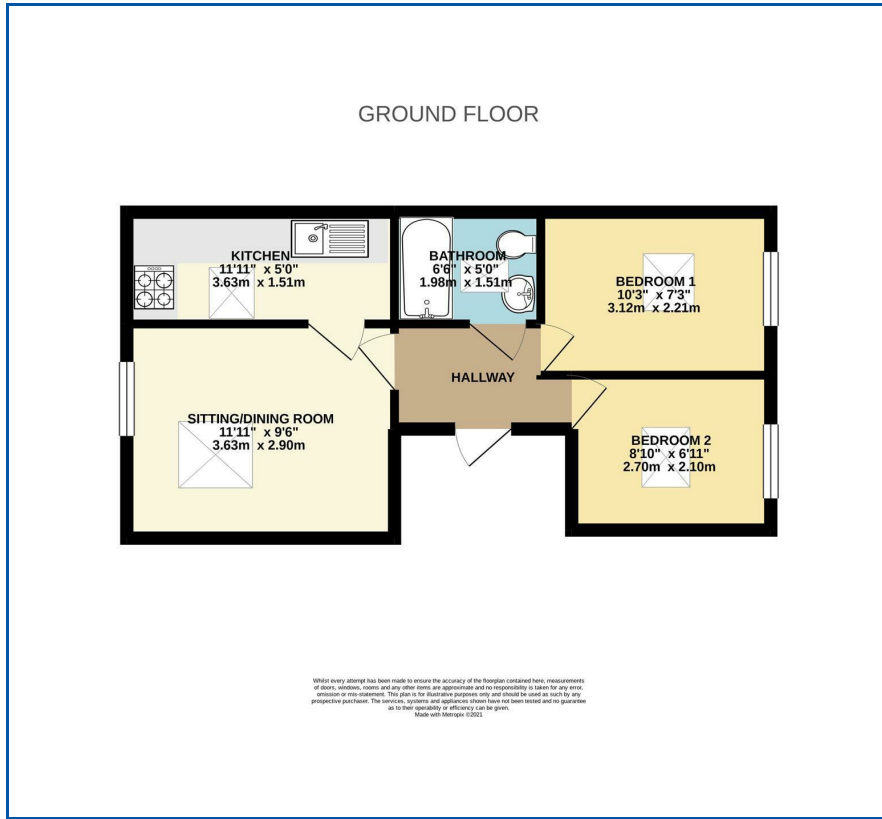
RESIDENTIAL SERVICES



Flat 5 Mill Lane
Lymm, WA13 9SD
Asking Price £85,000



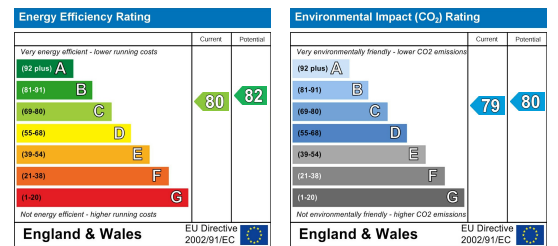
Floor Plan



Area Map



Energy Efficiency Graph



Viewing

Please contact us on 01925 756931 if you wish to arrange a viewing appointment for this property or require further information.

- Second Floor Apartment
- Spacious Lounge
- Two Double Bedrooms
- No Onward Chain
- Short Drive from Lymm Village
- Fitted Kitchen
- Bathroom
- Allocated Parking

A purpose-built apartment on Mill Lane offers a delightful blend of comfort and convenience. With two well-proportioned bedrooms, this property is ideal for couples, small families, or those seeking a peaceful retreat. The flat features a spacious reception room, perfect for entertaining guests or enjoying a quiet evening in.

The bathroom is thoughtfully designed, providing a relaxing space to unwind after a long day. The layout of the flat maximises natural light, creating a warm and inviting atmosphere throughout.

Lymm is renowned for its picturesque surroundings, with scenic walks and local parks just a stone's throw away. The village boasts a variety of shops, cafes, and restaurants, ensuring that all your daily needs are met within easy reach. Additionally, excellent transport links make commuting to nearby towns and cities a breeze.

This flat presents a wonderful opportunity for those looking to embrace a tranquil lifestyle in a vibrant community. Whether you are a first-time buyer or seeking a rental investment, this property is sure to impress. Do not miss the chance to make this lovely flat your new home.



These particulars, whilst believed to be accurate are set out as a general outline only for guidance and do not constitute any part of an offer or contract. Intending purchasers should not rely on them as statements of representation of fact, but must satisfy themselves by inspection or otherwise as to their accuracy. No person in this firm's employment has the authority to make or give any representation or warranty in respect of the property.