

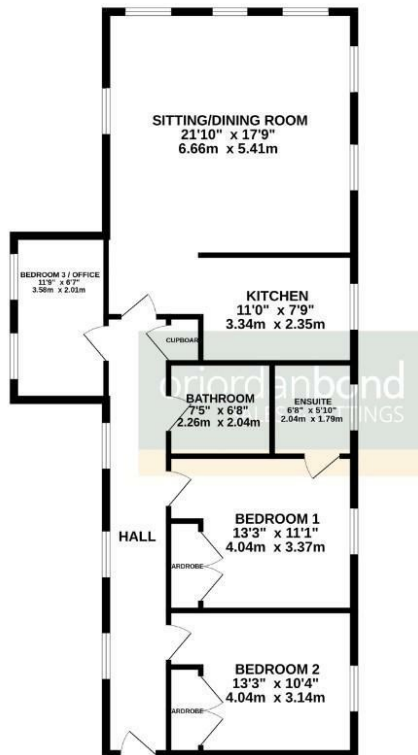


**South Meadow Road**  
St. Crispin, Northampton

**oriordanbond**  
SALES & LETTINGS



GROUND FLOOR  
1021 sq.ft. (94.8 sq.m.) approx.



TOTAL FLOOR AREA : 1021 sq.ft. (94.8 sq.m.) approx.  
Whilst every attempt has been made to ensure the accuracy of the floorplan contained here, measurements of doors, windows, rooms and any other items are approximate and no responsibility is taken for any error, omission or misstatement. This plan is for illustrative purposes only and should be used as such by any prospective purchaser. The services, systems and appliances shown have not been tested and no guarantee as to their operability or efficiency can be given.  
Made with Hozonix C2025

## South Meadow Road

St. Crispin  
NN5 4AP

OFFERS OVER £200,000

Offered to the market with no onward chain is this spacious and well presented three bedroom apartment. Located within the desirable area of St. Crispin, the property is set on the first floor within the block.

Accommodation comprises entrance hall, sitting/dining room, kitchen with integrated appliances, three double bedrooms with the master benefiting from an en-suite and a family bathroom. Benefits include electric heating, double glazing, secure intercom entry system and two allocated parking spaces within a gated car park. (C/1021/-)

Leasehold information: Lease Remaining - 107 years (as of 2026) / Ground Rent - £250 per annum / Service Charge - £2835 per annum

### Additional information

- Council Tax Band: D
- Energy Efficiency Rating: D

### Viewing

Viewing strictly by appointment – details below

### Disclaimer

O'Riordan Bond Estate Agents Limited has not tested apparatus, equipment, fittings or services and so cannot verify they are in working order. The buyer is advised to obtain verification from their solicitor or surveyor.

O'Riordan Bond Duston Sales  
01604 589007

duston@oriordanbond.co.uk

