



# 1 Ringley Park

Whitefield, M45 7NT

## Asking price £925,000

Situated on the highly sought-after Ringley Park, just off of Ringley Road in Whitefield, this substantial five-bedroom detached property offers exceptional space, privacy, and ideal family living.

The property is entered via external gates, opening onto a large private driveway providing ample off-road parking for multiple vehicles, along with access to a double garage.

A porch entrance leads into a spacious and welcoming entrance hall, setting the tone for the accommodation throughout. Off the hallway, there is a main reception room and a separate dining room, perfect for both everyday living and formal entertaining. The property also benefits from a well-presented kitchen, complete with integrated appliances and a separate front-facing office—ideal for those working from home.

Further ground floor accommodation includes a utility room with direct internal access to the double garage, a convenient downstairs WC, and an additional reception room to the rear, with direct access to the garden.

Externally, the property boasts a generous west-facing rear garden, offering a high degree of privacy. The garden is predominantly laid to lawn with two paved patio areas, making it perfect for outdoor dining and family enjoyment.

To the first floor, the property features an impressive principal bedroom suite, complete with built-in storage and a spacious en-suite bathroom fitted with twin sinks, a large bath, separate shower, and WC. There are four further

- HIGHLY SOUGHT AFTER M45 LOCATION
- APPROX 3,000 SQ FT
- DETACHED 5 BED
- DOUBLE GARAGE
- GATED ENTRANCE
- LARGE DRIVEWAY
- WEST FACING REAR GARDEN
- EN SUITE TO SPACIOUS MASTER BEDROOM
- DOWNSTAIRS WC
- CHAIN FREE

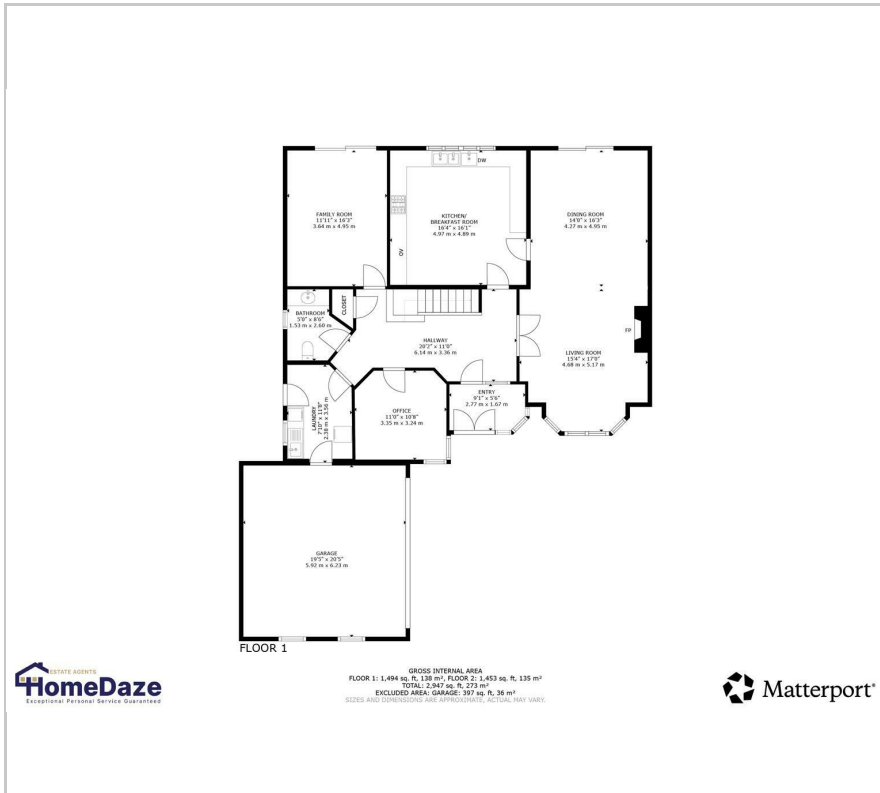
### Viewing

Please contact our HomeDaze Manchester Office on 0161 691 1916

if you wish to arrange a viewing appointment for this property or require further information



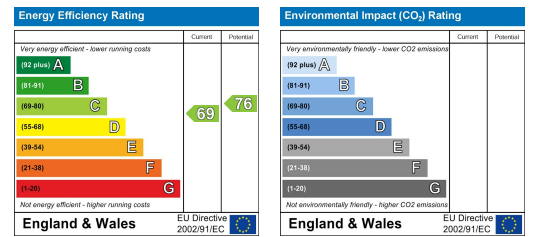
# Floor Plan



# Area Map



# Energy Efficiency Graph



These particulars, whilst believed to be accurate are set out as a general outline only for guidance and do not constitute any part of an offer or contract. Intending purchasers should not rely on them as statements of representation of fact, but must satisfy themselves by inspection or otherwise as to their accuracy. No person in this firm's employment has the authority to make or give any representation or warranty in respect of the property.