



76 C2 Cardiff Road

Caerphilly CF83 1JR

£800 Per Calendar Month

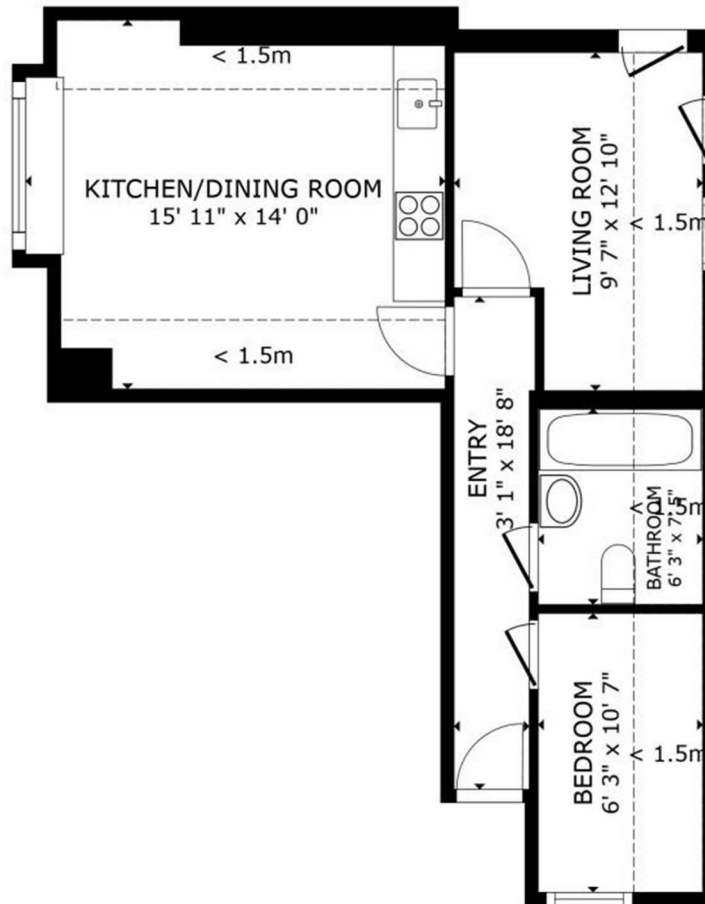
HARRIS & BIRT



Harris and Birt are pleased to be able to offer for rent this two bedroom top floor apartment located in a central location in Caerphilly, close to local shops and amenities and minutes away from Caerphilly train station. The property has a good size lounge which is open plan to a fitted kitchen with oven, hob and hood, space for washing machine and under counter fridge, two bedrooms and a modern bathroom with suite in white and shower over the bath with shower screen. The property has gas central heating and double glazing and is offered on an unfurnished basis. EPC Rating C. Council tax band A. Unfurnished. No parking and no garden. Available Immediately.







HARRIS & BIRT

Chartered Surveyors, Land and Estate Agents

Cowbridge

65 High Street, Cowbridge, CF71 7AF

01446 771777 cowbridge@harrisbirt.co.uk

Cardiff

359 Caerphilly Road, Cardiff, CF14 4QF

02920 614411 cardiff@harrisbirt.co.uk

harrisbirt.co.uk

Harris & Birt is the trading name of Ingram Evans Care Ltd. Registered Office: 359 Caerphilly Road, Cardiff, CF14 4QF. Company No: 04845507

You may download, store and use the material for your own personal use and research. You may not republish, retransmit, redistribute or otherwise make the material available to any party or make the same available on any website, online service or bulletin board of your own or of any other party or make the same available in hard copy or in any other media without the website owner's express prior written consent. The website owner's copyright must remain on all reproductions of material taken from this website.



Energy Efficiency Rating		Environmental Impact (CO ₂) Rating	
	Current	Potential	
Very energy efficient - lower running costs			
(92 plus) A			Very environmentally friendly - lower CO ₂ emissions
(81-91) B			(92 plus) A
(69-80) C			(81-91) B
(55-68) D	73	73	(69-80) C
(39-54) E			(55-68) D
(21-38) F			(39-54) E
(1-20) G			(21-38) F
Not energy efficient - higher running costs			Not environmentally friendly - higher CO ₂ emissions
England & Wales		England & Wales	
EU Directive 2002/91/EC		EU Directive 2002/91/EC	

