



**122 Tosson Terrace, Newcastle Upon Tyne, NE6 5LW**

**£270 Per Week**

Available August 2026 | £90 per person per week | Hive Estates presents this stunning 3 bedroom fully modernised flat in Heaton to rent. With an open plan kitchen, living and breakfasting room with integrated appliances, breakfast bar, wall mounted LCD TV and spotlights. Ideal for students or professionals wanting a quality shared property.

Hive Estates presents this stunning 3 bedroom fully modernised flat in Heaton to rent. With an open plan kitchen, living and breakfasting room with integrated appliances, breakfast bar, wall mounted LCD TV and spotlights. Ideal for students or professionals wanting a quality shared property.

The property has three double bedrooms, each furnished with a desk, chair, wardrobe, double bed and drawers. There's a blend of white and grey decoration throughout, with white woodwork. The shower room is black and white with a corner power shower unit and sink with large mirror. There is a separate toilet under the stairs with a basin. The living room has two sofas and a coffee table with wall mounted LCD TV. There's a modern kitchen with breakfast bar and stools, and appliances provided include a fridge freezer and integrated stainless steel oven, hob and extractor. There's a small utility room with back door leading to the back yard, and a washing machine and dryer provided too. The property is double glazed throughout with an efficient BAXI boiler providing gas central heating.

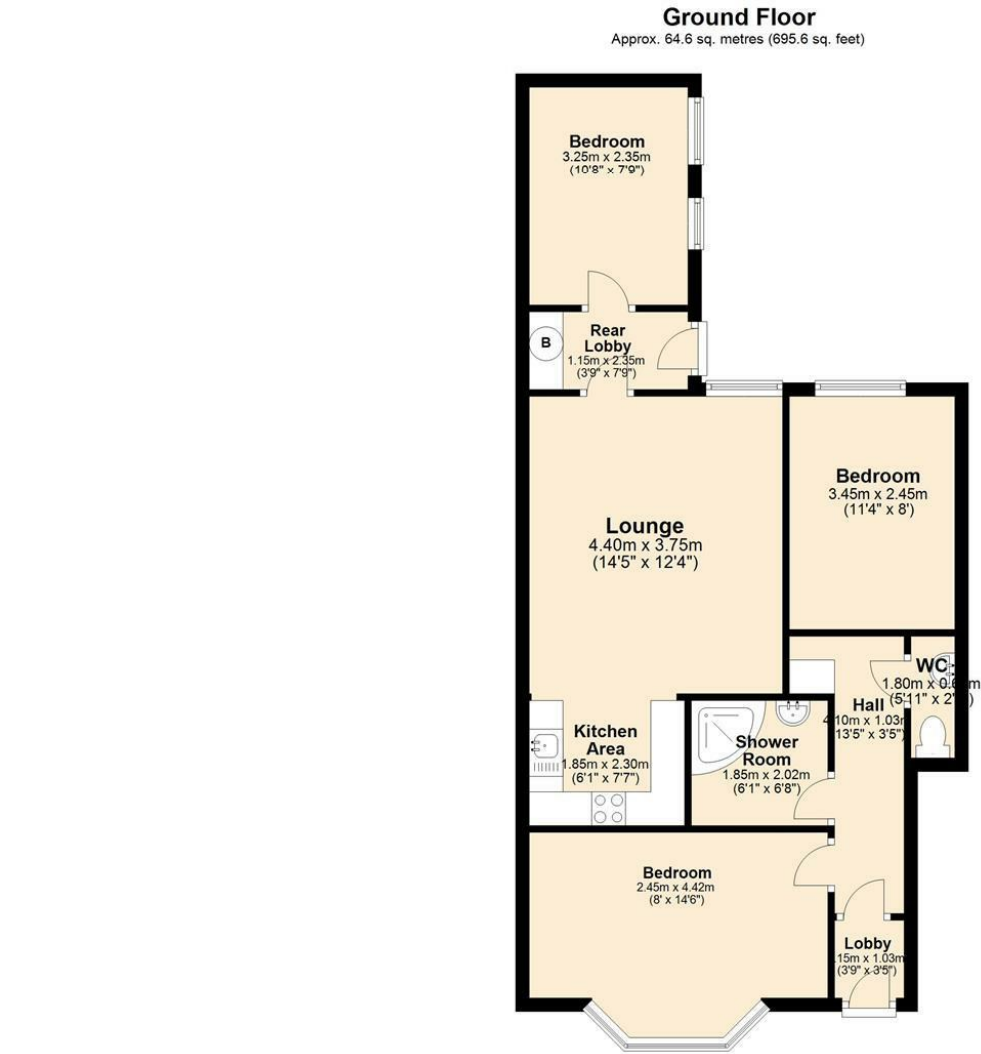
### **WHAT TO DO NEXT?**

Contact the hive team to book a viewing either by calling the telephone number above or sending an email by completing the enquiry form on this page. We'll happily show you around at a time that suits you, and can even pick you up or drop you off. Any questions you have will be answered and you'll be explained the letting process in detail with us.

### **DISCLAIMER**

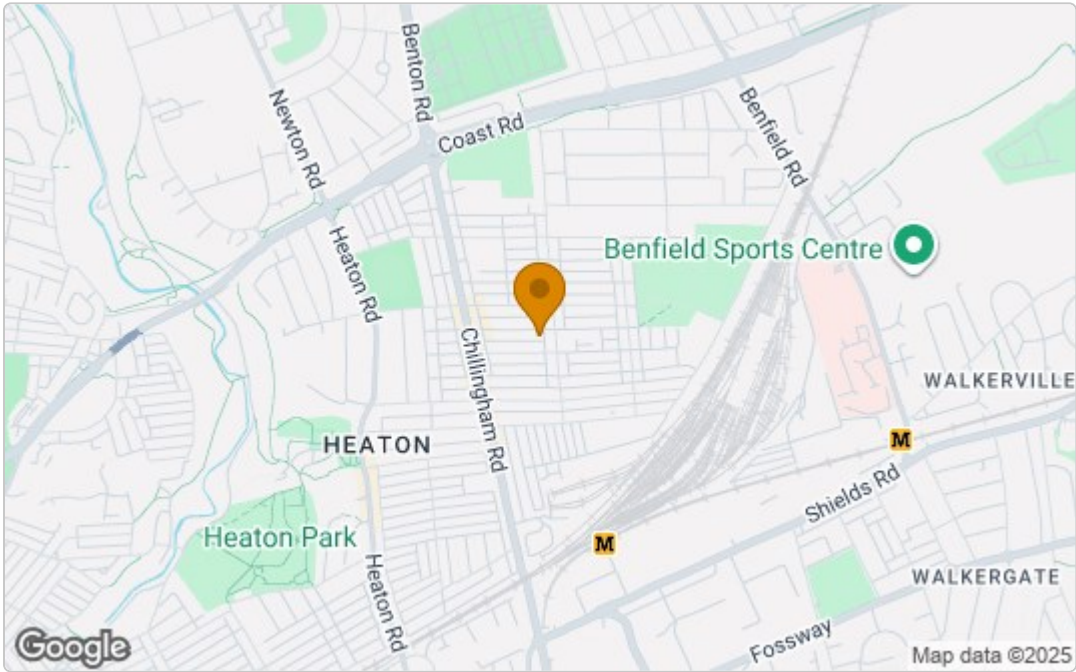
All property photographs are copyrighted and must not be used without our permission. Whilst every care has been taken to ensure the accuracy of this property advert, we cannot guarantee this and potential tenants should seek clarification on all details before proceeding to rent a property with hive.

Floor Plan

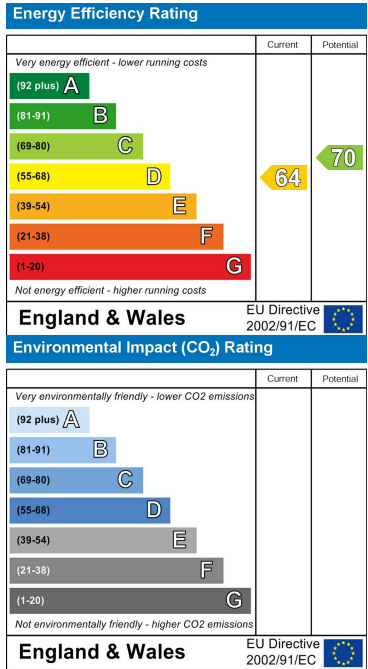


Area Map

Total area: approx. 64.6 sq. metres (695.6 sq. feet)



Energy Efficiency Graph



These particulars, whilst believed to be accurate are set out as a general outline only for guidance and do not constitute any part of an offer or contract. Intending purchasers should not rely on them as statements of representation of fact, but must satisfy themselves by inspection or otherwise as to their accuracy. No person in this firms employment has the authority to make or give any representation or warranty in respect of the property.