



Etwell Place, KT5

£525,000

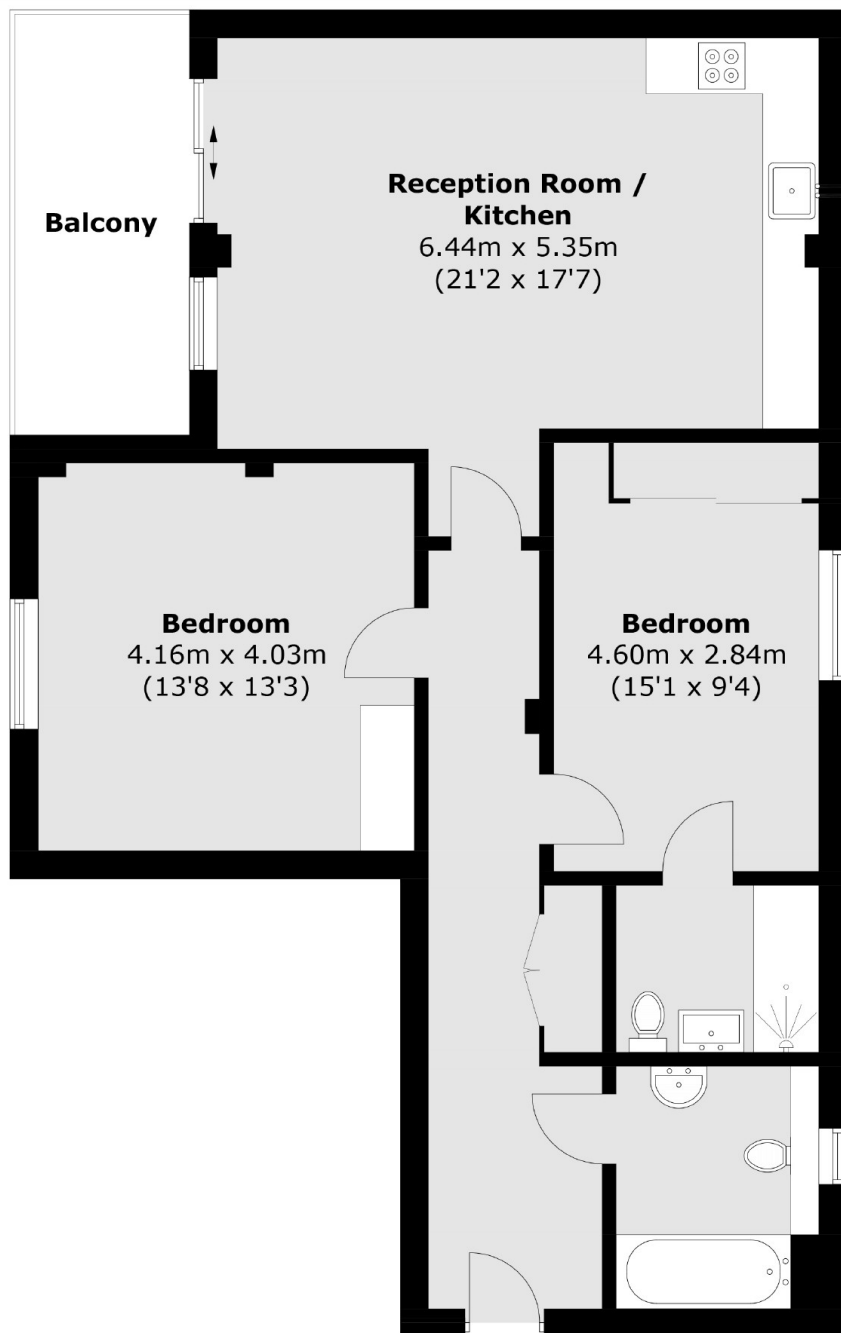
This larger than average first floor modern apartment is located in central Surbiton. It offers two double bedrooms, two bathrooms, an open plan kitchen/reception room and a large private balcony. There are the added benefits of an allocated parking space and a lift service.

Etwell Place is a peaceful road around the corner from Ewell Road which offers a selection of bars, restaurants and local shops. The property is less than half a mile to Surbiton station, which has fast links to Waterloo as well as convenient access to the A3.

Features

First Floor
Two Double Bedrooms
Modern Interior
Allocated Parking
Private Balcony
Central Location

Etwell Place, Surbiton, KT5



First Floor

Total area (approx.): 85.0 sq. m (914.9 sq. ft)
Balcony (approx.): 8.4 sq. m (90.4 sq. ft)

Dexters

Surbiton
4 Claremont Road
Surbiton
KT6 4QU
Sales
020 8390 3939

Energy Rating: B. We aim to make our particulars both accurate and reliable. However they are not guaranteed; nor do they form part of an offer or contract. If you require clarification on any points then please contact us, especially if you're traveling some distance to view. Please note that appliances and heating systems have not been tested and therefore no warranties can be given as to their good working order.

 **RICS** | Regulated
Estate Agent
and Letting Agent

[dexters.co.uk](https://www.dexters.co.uk)