

oakheart



£500,000

Guide Price

High Street, West Mersea



Guide Price £500,000. - £525,000.

A beautifully presented three-bedroom detached home, fully refurbished throughout and ideally positioned within a central village location. Offering stylish, modern accommodation combined with excellent practicality, this property is perfectly suited to families, professionals, and down sizers alike and is offered with no onward chain.

The home features bright and well-proportioned living spaces finished to a high standard, allowing the next owner to move straight in. The ground floor further benefits from a convenient downstairs bathroom, ideal for modern family living and guests. Upstairs are three generous bedrooms, all thoughtfully laid out to maximise space and comfort, with the principal bedroom further benefiting from built-in storage.

Externally, the property enjoys an integrated garage and an

impressive driveway providing off-street parking for up to six vehicles — a rare feature for such a central location. The setting offers both convenience and privacy, with village amenities close at hand.

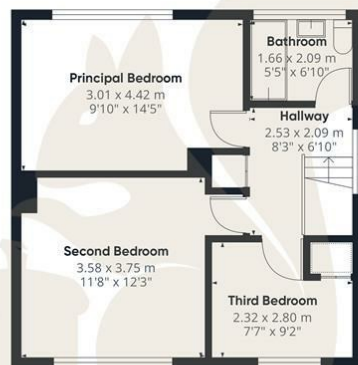
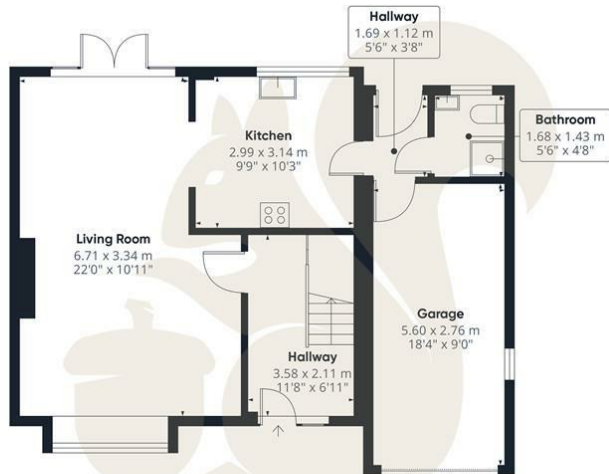
Situated within easy walking distance of local shops, amenities, beach and transport links, this attractive detached home combines modern living with village convenience.











**oakheart**

Approximate total area<sup>(1)</sup>

105.9 m<sup>2</sup>  
1140 ft<sup>2</sup>

(1) Excluding balconies and terraces

Calculations reference the RICS IPMS 3C standard. Measurements are approximate and not to scale. This floor plan is intended for illustration only.

GIRAFFE360

Local Authority:

Colchester

Tenure:

Freehold

Council Tax Band:

D

### Energy Efficiency Rating

	Current	Potential
<i>Very energy efficient - lower running costs</i>		
(92 plus) <b>A</b>		
(81-91) <b>B</b>		
(69-80) <b>C</b>		<b>79</b>
(55-68) <b>D</b>	<b>64</b>	
(39-54) <b>E</b>		
(21-38) <b>F</b>		
(1-20) <b>G</b>		
<i>Not energy efficient - higher running costs</i>		
<b>England &amp; Wales</b>	EU Directive 2002/91/EC	

Agents Note: Whilst every care has been taken to prepare these particulars, they are for guidance purposes only. All measurements are approximate and are for general guidance purposes only and whilst every care has been taken to ensure their accuracy, they should not be relied upon.

Oakheart Mersea

01206 382191

mersea@oakheart.co.uk

34a Barfield Rd, West Mersea, Colchester, Essex, CO5 8QT

**oakheart**