



16 Fairfield Avenue, Watford

In Excess of £550,000





16 Fairfield Avenue

Watford

This outstanding purpose-built terrace house presents an exceptional opportunity to acquire a beautifully maintained home in a highly sought-after location, just minutes' walk from Carpenders Park station. Constructed with enduring brick, the property has been thoughtfully extended on the ground floor, resulting in an impressive 1,141 square feet of versatile living accommodation.

Council Tax band: D

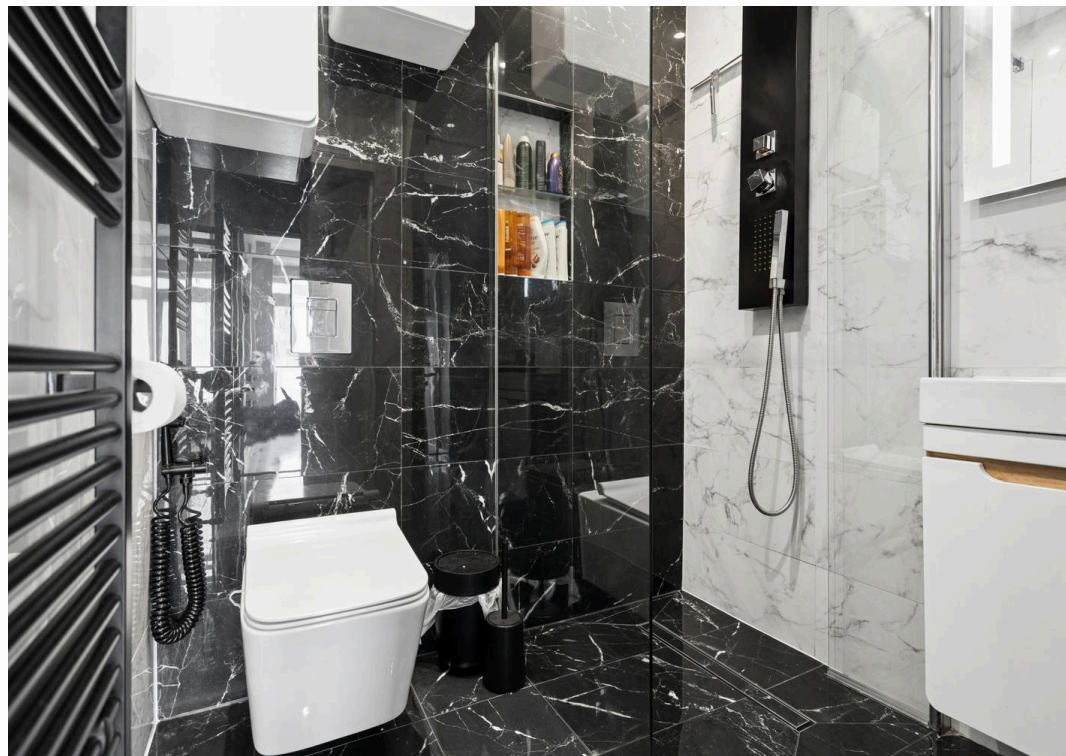
Tenure: Freehold

EPC Energy Efficiency Rating: C

EPC Environmental Impact Rating:

- PURPOSE BUILT TERRACE HOUSE
- BRICK BUILT HOUSE
- GROUND FLOOR EXTENSION
- THREE DOUBLE BEDROOMS / TWO BATHROOMS
- EXCEPTIONAL CONDITION THROUGHOUT
- 1,141 SQFT OF LIVING ACCOMMODATION
- HARD STANDING - BLOCKED PAVED FRONT GARDEN
- MINUTES WALKING DISTANCE OF CARPENDERS PARK STATION











Approximate Gross Internal Area
Ground Floor = 59.4 sq m / 639 sq ft
First Floor = 46.6 sq m / 502 sq ft
Total = 106 sq m / 1,141 sq ft

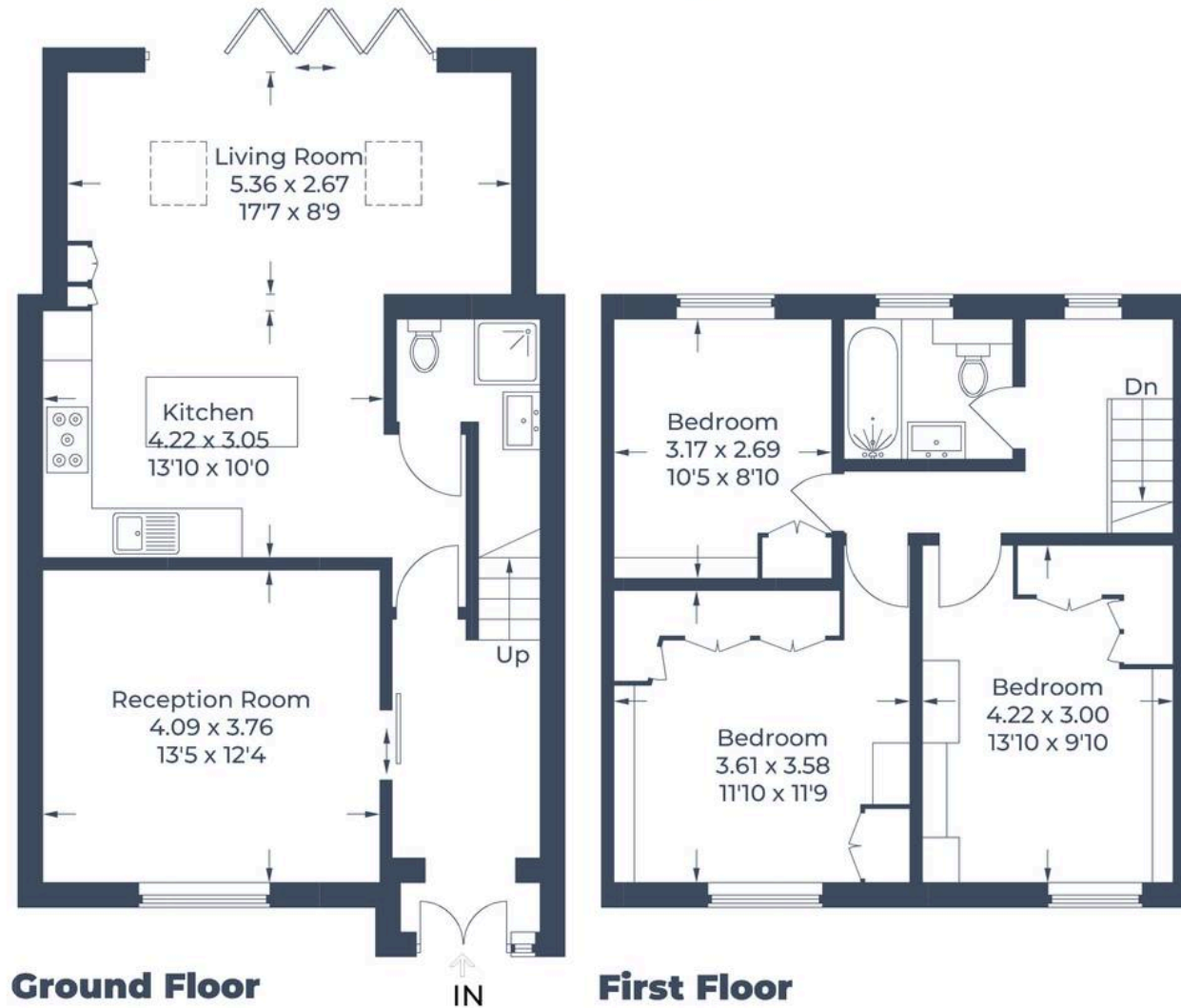
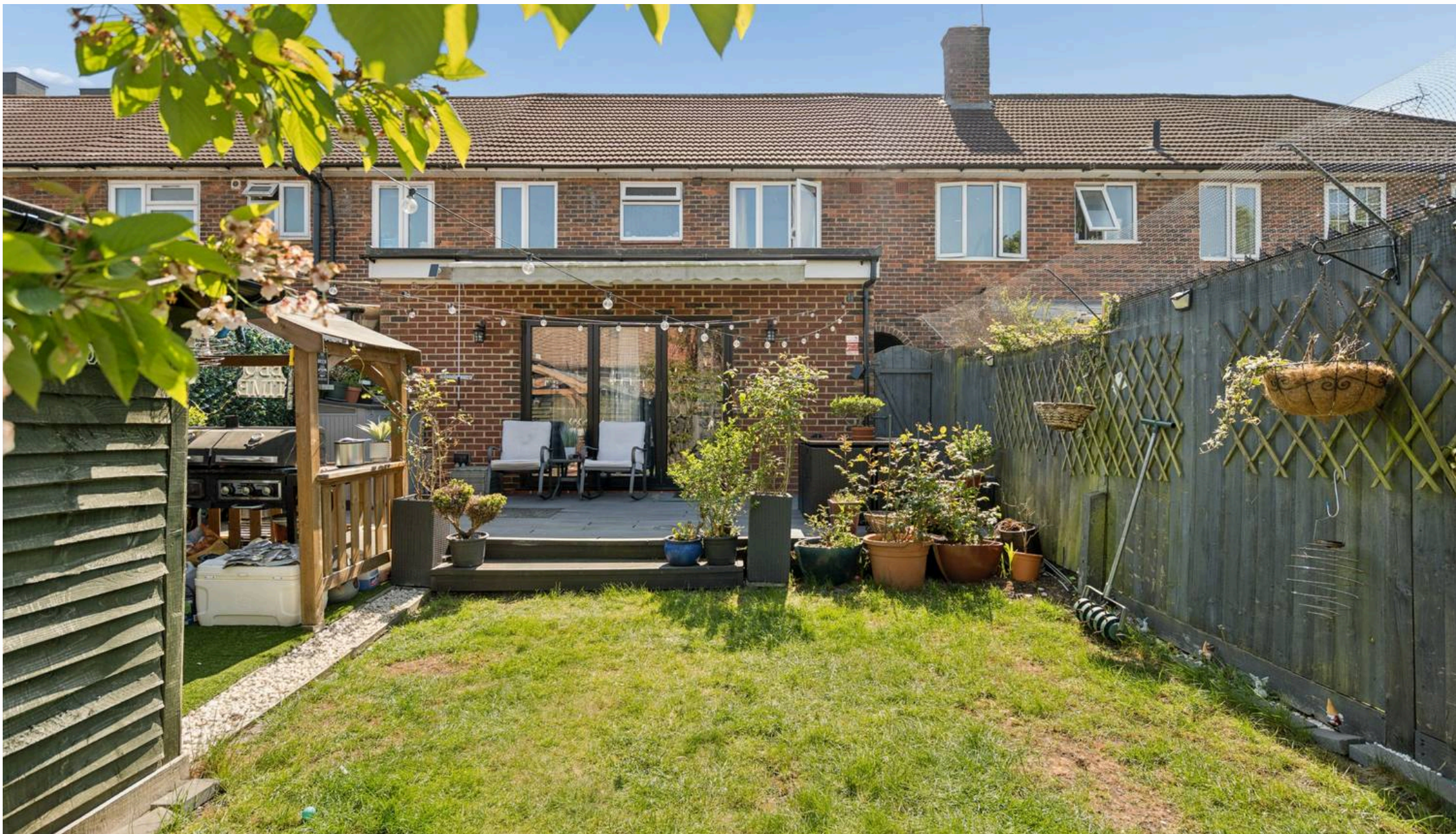


Illustration for identification purposes only,
measurements are approximate, not to scale.

© CJ Property Marketing Produced for Fairfield Estates





Fairfield – Oxhey

1 Station Approach, Watford – WD19 7DT

020 8428 0540 • rob@fairfieldstates.co.uk • fairfieldstates.co.uk/

We have prepared these particulars as a general guide of the property and they are not intended to constitute part of an offer or contract. We have not carried out a detailed survey of the property and we have not tested any apparatus, fixtures, fittings, or services. All measurements and floorplans are approximate, and photographs are for guidance only. These should not be relied upon for the purchase of carpets or any other fixtures or fittings. Lease details, service