



Estate Agents  
**Hurst**

3 Mayflower Close, Hartwell, Aylesbury, Buckinghamshire, HP17 8QH

£775,000

# 3 Mayflower Close, Hartwell, Aylesbury, Buckinghamshire, HP17 8QH

Offered to the market with NO ONWARD CHAIN is this bright and spacious four DOUBLE bedroom DETACHED family home extending to approximately 2,414 Sq.Ft, situated on a substantial plot with a large enclosed rear garden enjoying far-reaching countryside views.

Mayflower Close is a small and well-established cul-de-sac in Hartwell, on the outskirts of Aylesbury, made up predominantly of substantial detached homes with generous spacing between properties. The location offers a semi-rural feel whilst remaining convenient for local amenities, countryside walks, pubs and commuting links, with Aylesbury town centre only a short drive away.

The ground floor accommodation is ideal for modern family living and comprises an enclosed porch, entrance hall, generous L-shaped sitting room, conservatory overlooking the garden, beautifully fitted kitchen/dining room with shaker-style units, central island and woodburning stove, alongside a large family room, study, utility room and cloakroom.

To the first floor are four well-proportioned double bedrooms, with the principal bedroom benefitting from an ensuite shower room, in addition to a modern family bathroom.

Outside, the property offers ample driveway parking leading to a single garage, whilst the impressive rear garden enjoys lovely open countryside views.



**LARGE DETACHED FAMILY HOME (2,414 SQ.FT)**

**FOUR DOUBLE BEDROOMS**

**HIGHLY SOUGHT AFTER LOCATION**

**BACKING ONTO OPEN FARMLAND**

**STUNNING KITCHEN/DINER SPACE**

**SPACIOUS CONSERVATORY**

**EN-SUITE SHOWER ROOM**

**AMPLE DRIVEWAY PARKING & GARAGE**

**OFFICE/STUDY**

**GUEST CLOAKROOM**

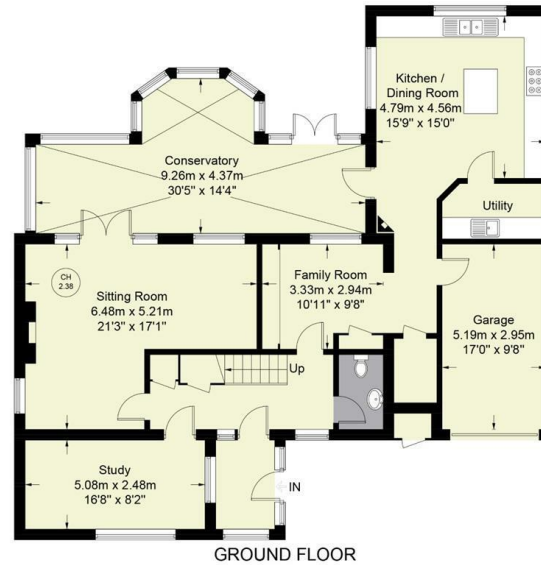






### Mayflower Close

Approximate Gross Internal Area  
 (Including Garage & Excluding External Cupboard)  
 Ground Floor = 1691 sq ft / 157.1 sq m  
 First Floor = 723 sq ft / 67.2 sq m  
 Total = 2414 sq ft / 224.3 sq m



Floor Plan produced for Hursts by Media Arcade Ltd ©.  
 Illustration for identification purposes only. Window and door openings are approximate. Whilst every attempt is made to assure accuracy in the preparation of this plan, please check all dimensions, shapes and compass bearings before making any decisions reliant upon them.



The Property Misdescriptions Acts 1991. Hurst Estate Agents have not tested any apparatus, equipment, fixture and fittings or services and cannot verify that they are in working order or fit for the purpose. A buyer is advised to obtain verification from their solicitor or surveyor. References to the tenure of the property are based on information supplied by the seller. Hurst Estate Agents has not had sight of the title documents. A buyer is advised to obtain verification from their solicitor.

1 Crendon Street, High Wycombe, Bucks, HP13 6LE

Tel: 01494 521234 Fax: 01494 523392 Email: wyc@hursts.co.uk Web: www.hursts.co.uk