



Linden, Witney Lane, Leaffield



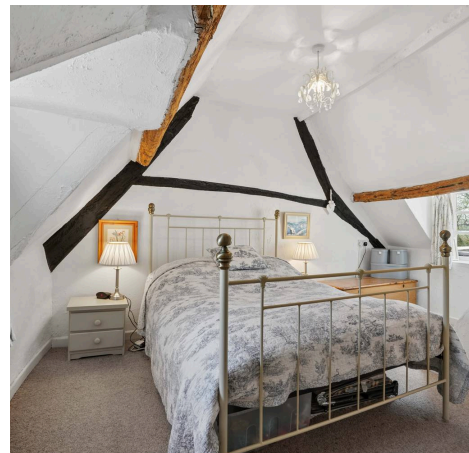
Linden Witney Lane

Brought to market with no onward chain is this charming Grade II listed cottage situated in the highly sought-after village of Leaffield.

Council Tax band: E

Tenure: Freehold

- Brought to market with no onward chain.
- A wonderful opportunity to purchase this characterful Grade II listed two-bedroom cottage located in the sought-after village of Leaffield.
- Abundant in period character, showcasing exposed wooden beams, flagstone flooring, classic ledge-and-brace doors and an impressive inglenook fireplace with an open fire.
- Two well-proportioned bedrooms.
- Beautifully kept rear garden with mature trees and shrubs in addition to a paved patio.
- Open plan kitchen/dining/family room with french doors leading to the rear garden.

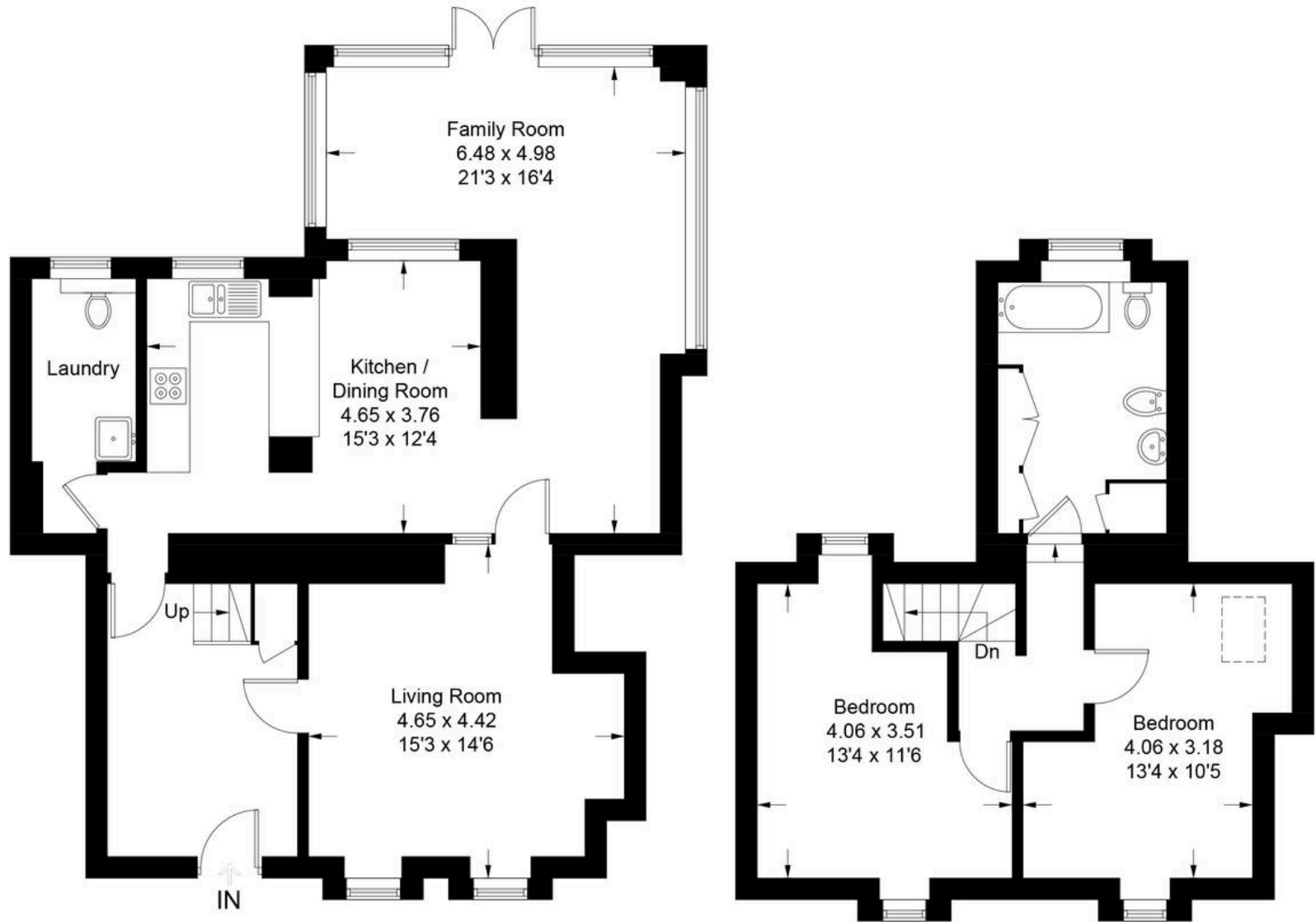


Witney Lane - Leafield

Approximate Gross Internal Area = 116.9 sq m / 1258 sq ft

Outbuilding = 4.7 sq m / 50 sq ft

Total = 121.6 sq m / 1308 sq ft



(Not Shown In Actual Location / Orientation)

Outbuilding

Ground Floor

First Floor

Illustration for identification purposes only, measurements are approximate, not to scale. Fourlabs.co © (ID1291034)



Simpsons Witney Branch

4 Langdale Court Witney, Oxfordshire - OX28 6AD

01993 835030 • witney@simpsonsproperty.com • www.simpsonsproperty.com/