



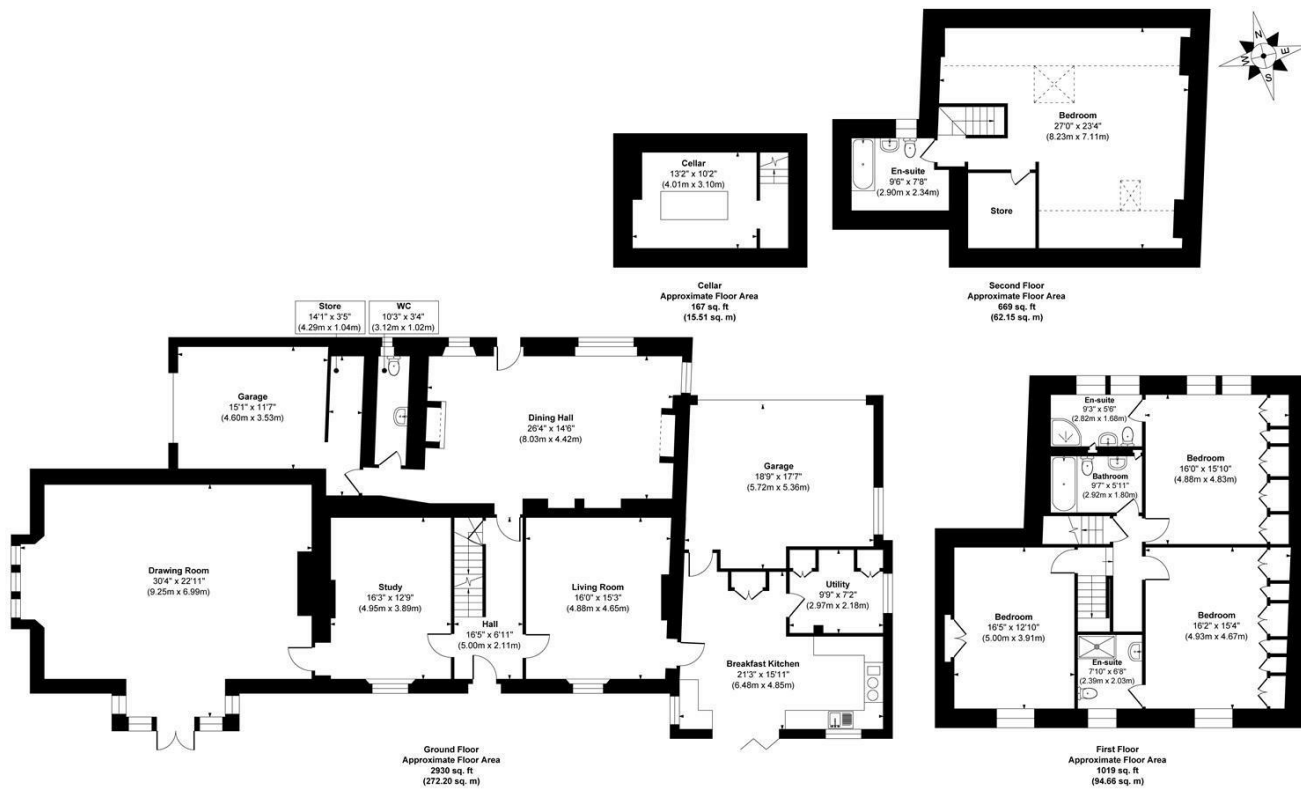
LARKFIELD GRANGE LARKFIELD GRANGE, LARKFIELD ROAD
LEEDS, LS19 6DZ

£1,250,000
FREEHOLD

An exceptional character residence offering an abundance of space, charm and future potential, this impressive home seamlessly blends original period features with versatile accommodation suited to a variety of lifestyles.

MONROE

SELLERS OF THE FINEST HOMES



Approx. Gross Internal Floor Area 4785 sq. ft / 444.52 sq. m
 Illustration for identification purposes only, measurements are approximate, not to scale.
 Copyright © Show Home



Energy Efficiency Rating		Current	Potential
Very energy efficient - lower running costs			
(92 plus) A			
(81-91) B			
(69-80) C			
(55-68) D			
(39-54) E		55	63
(21-38) F			
(1-20) G			
Not energy efficient - higher running costs			
England & Wales		EU Directive	
		2002/91/EC	

Agents Note: Whilst every care has been taken to prepare these particulars, they are for guidance purposes only. All measurements are approximate and are for general guidance purposes only and whilst every care has been taken to ensure their accuracy, they should not be relied upon and potential buyers/tenants are advised to recheck the measurements

Guiseley Sales
 3a Oxford Road
 Guiseley
 Leeds
 LS20 9AS

james@monroestateagents.com
 monroestateagents.com

MONROE

SELLERS OF THE FINEST HOMES