

# 67 Tuckers Court, £485,000\*

(\*Other charges apply)

RICHMOND  
VILLAGES

Part of Bupa



## 2 bedroom ground floor apartment

A rare opportunity to acquire this well-presented two-bedroom ground floor apartment, enjoying attractive west-facing views over landscaped gardens. Conveniently situated within a short walk of the main building, the apartment offers easy access to excellent on-site facilities including a restaurant, reception, library, Wellness Spa, gardens and bowling green.

### Specification

- Generously sized living room with electric fire with Bath stone-effect surround.
- Patio doors opening onto a west-facing patio.
- Fitted kitchen with wall and base units, under-cupboard lighting, and integrated appliances including double oven, ceramic hob, fridge, freezer, dishwasher, sink and drainer.
- Light and airy double bedroom with floor-to-ceiling fitted wardrobes.
- En-suite shower room including walk-in shower, WC and washbasin.
- Generously sized second bedroom with additional storage space.
- Spacious entrance hall with utility cupboard and additional storage cupboard.
- TV and satellite points\*.
- Well-stocked flower borders and lawns maintained by the Village Gardeners.
- Allocated parking space for one car.

\*Satellite subscription not included.

Important Notice: These particulars are intended to give a fair and substantially correct overall description. Other fees and charges apply, please contact the Village Advisers for further details. Properties are sold on a 125-year lease, with 115 years remaining.

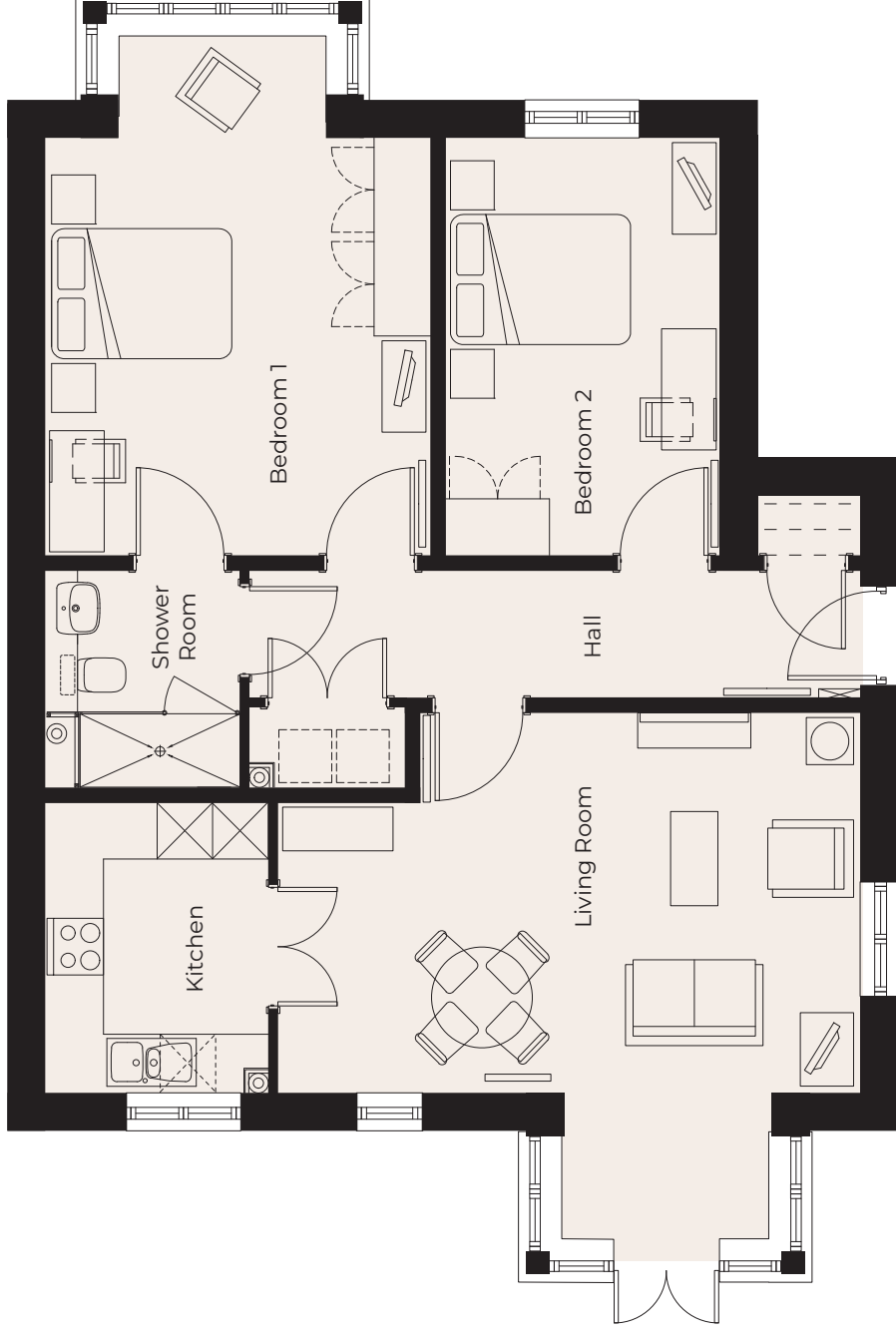
01993 894 000  
witney@richmond-villages.com

Richmond Villages Witney,  
Coral Springs Way, Witney, Oxfordshire OX28 5DG

# 67 Tuckers Court

Ground Floor | 87.89m<sup>2</sup> – 946.1ft<sup>2</sup>

- Kitchen  
3060mm x 2350mm  
10' x 7'9"
- Living Room  
6155mm x 5650mm (into bay)  
20'2" x 18'6"
- Bedroom 1  
5586mm x 4070mm (into bay)  
18'4" x 13'4"
- Shower Room  
2300mm x 2050mm  
7'7" x 6'9"
- Bedroom 2  
4427mm x 2940mm  
14'6" x 9'8"



These particulars are intended to give a fair and substantially correct overall description. Measurements have been taken at 1500mm skirting height. All dimensions are approximate. Bedroom measurements include the wardrobe if applicable. Room measurements include bay windows if applicable. Furniture layout is to give an indicative impression. Although all efforts have been made to ensure its accuracy at time of print dimensions, fixtures, fittings, finishes and specifications are subject to change without notice. The properties are sold unfurnished.

