



TO
LET

10 Mercury Walk, Hemel Hempstead
£975 pcm

squire | estates

10 Mercury Walk

Hemel Hempstead, Hemel Hempstead

Spacious studio in a well-kept development, close to shops and transport. Open-plan living, modern kitchen and bathroom, secure entry, double glazing, and built-in storage.

Council Tax band: B

EPC Energy Efficiency Rating: D

EPC Environmental Impact Rating: D

- Large Studio Apartment
- Close To Local Amenities
- EPC Rating D
- Must Be Seen



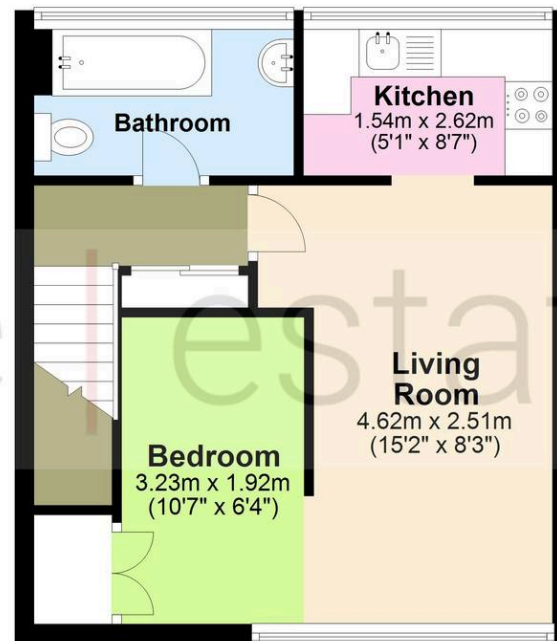
squire | estates

67 Marlowes, Hemel Hempstead
Hertfordshire HP1 1LE
t. 01442 233533

www.squireestates.co.uk

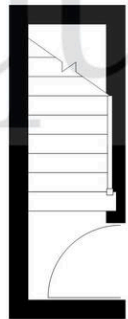
First Floor

Approx. 34.1 sq. metres (367.5 sq. feet)



Ground Floor

Approx. 2.4 sq. metres (25.7 sq. feet)



Total area: approx. 36.5 sq. metres (393.2 sq. feet)

The Floor Plan is not to Scale and measurements and areas shown are approximate and therefore should be used for illustrative purposes only. The plan has been prepared with due diligence and whilst we have confidence in the information produced it should not be relied upon. Maximum lengths and widths are represented on the plan. If there are any aspects of particular importance, you should carry out or commission your own inspection of the property. Copyright © SKMSTUDIO
Plan produced using PlanUp.□