



Guide Price
£350,000

Freehold

2x  1x  2x 

**South Road, South
Ockendon, Essex, RM15**

OVER 60?

Secure this property
for up to **59% less!**

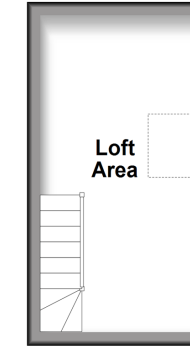
 **DOUGLAS
ALLEN**
Helping you move forwards



Main features

- Character filled home with open plan living accommodation
- Loft area ready for full conversion
- Original cast iron feature fireplaces
- Victorian styled character bathroom
- Rear private access & off road parking for multiple vehicles

Second Floor
Approx. 11.0 sq. metres (118.8 sq. feet)



Accommodation

GROUND FLOOR

Ground Floor
Approx. 39.1 sq. metres (420.4 sq. feet)

Hallway
Lounge: 13'6 x 11'4 (4.12m x 3.46m)
Kitchen: 17'9 x 13'0 (5.41m x 3.97m)
Dining Area

FIRST FLOOR

Landing
Bedroom 1: 13'6 x 12'0 (4.14m x 3.66m)
Bedroom 2: 13'6 x 9'8 (4.12m x 2.95m)
Bathroom: 10'9 x 8'4 (3.28m x 2.54m)

SECOND FLOOR

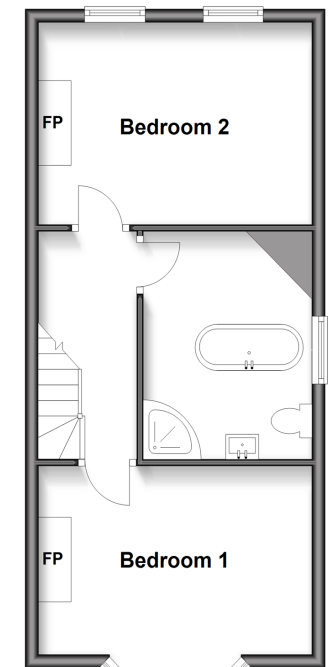
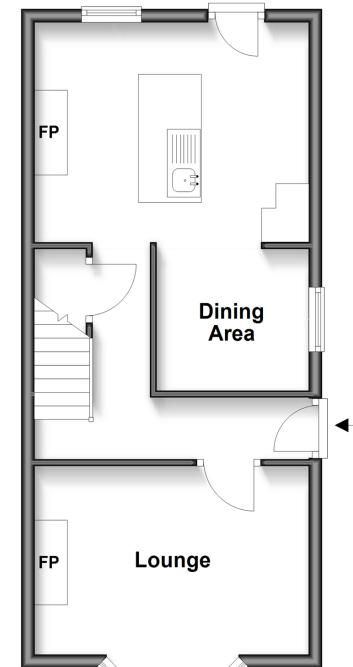
Loft Area: 17'0 x 7'6 (5.19m x 2.29m)

OUTSIDE

Toilet
Rear Garden
Off Road Parking To Rear
Front Garden

First Floor

Approx. 39.1 sq. metres (420.4 sq. feet)



Call Hornchurch - 01708 437777 ■ douglasallen.co.uk

- A private rental licensing scheme applies to some properties in this area, please check with the Local Authority before proceeding
- Legal advice should be taken to verify fixtures/fittings, planning, alterations and/or lease details
- Appliances & services are untested, dimensions are approximate and floor plans are not to scale
- Through a Homewise Home For Life Plan people aged 60+ can secure this property for up to 50% less, by purchasing a Lifetime Lease

