



BARRAIN
LONDON

Marsh Wall, London, E14 9EN
£3,100 Per month



Marsh Wall, London, E14 9EN

£3,100 Per month

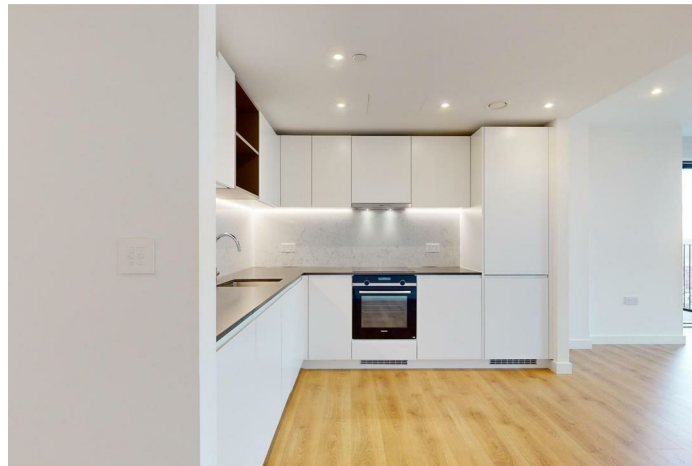
Long Let - One Thames Quay, a stunning new build apartment located at 225 Marsh Wall in the heart of London, E14. This off-plan property offers a modern and luxurious living space perfect for those seeking a stylish urban lifestyle.

Step into this exquisite apartment and be greeted by a spacious reception room, ideal for entertaining guests or simply relaxing after a long day. The property boasts one well-appointed bedroom, providing a comfortable retreat for rest and relaxation. Additionally, you'll find a sleek bathroom offering both style and convenience.

Situated in close proximity to Canary Wharf, this apartment offers easy access to one of London's most vibrant business districts, ensuring a seamless work-life balance. Not to mention, the property is conveniently located near a variety of local amenities, making daily errands a breeze.

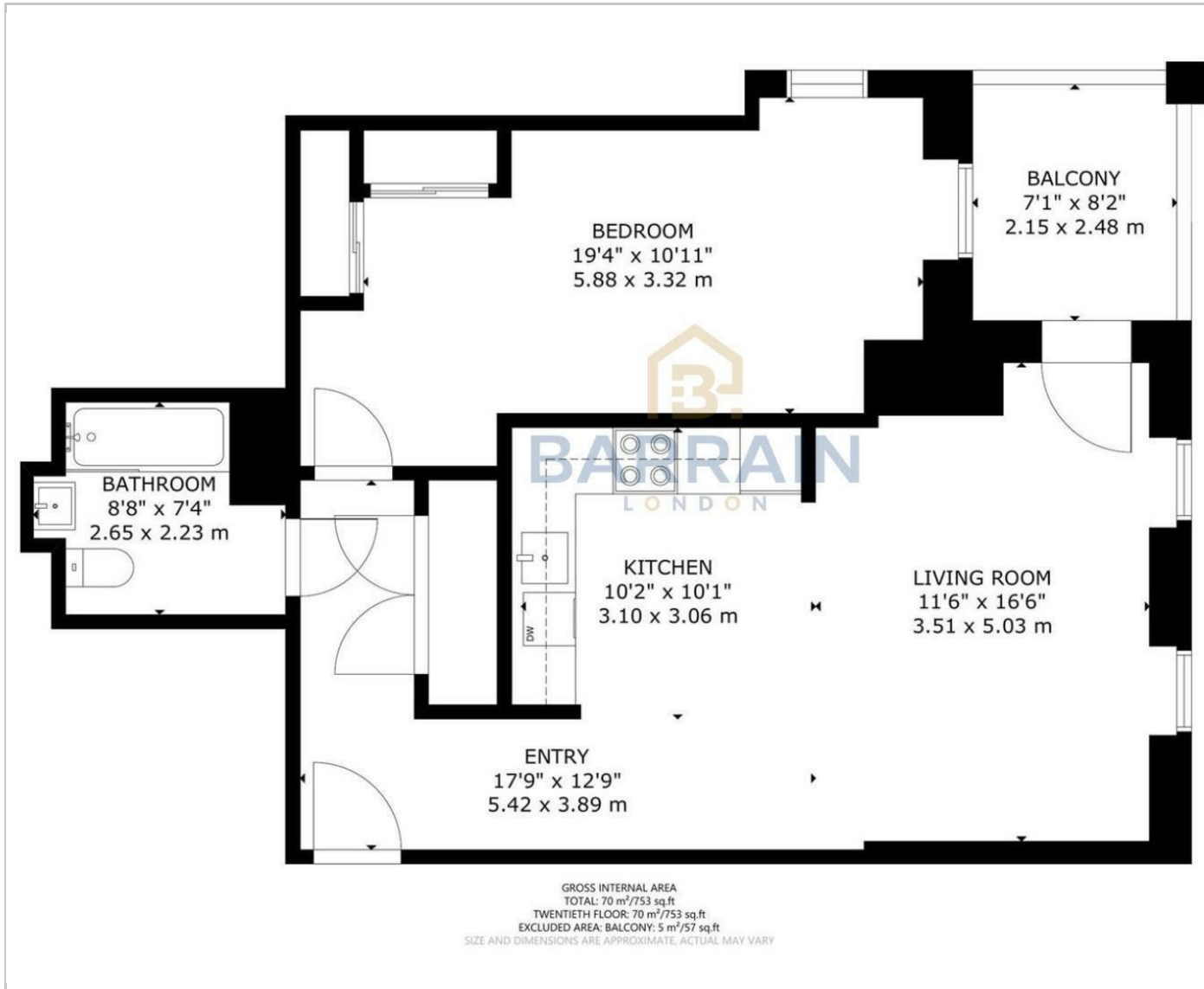
Key Features

- New One Bedroom Apartment - 753 sqf - Furnished
- 24/7 security, concierge
- Amazing amenities: cocktail lounge, gym, cinema, bowling room
- Residents' terraces, garden
- High Floor
- A play garden and work-from-home space
- Roof Terrace
- Lovely views
- Extra storage areas

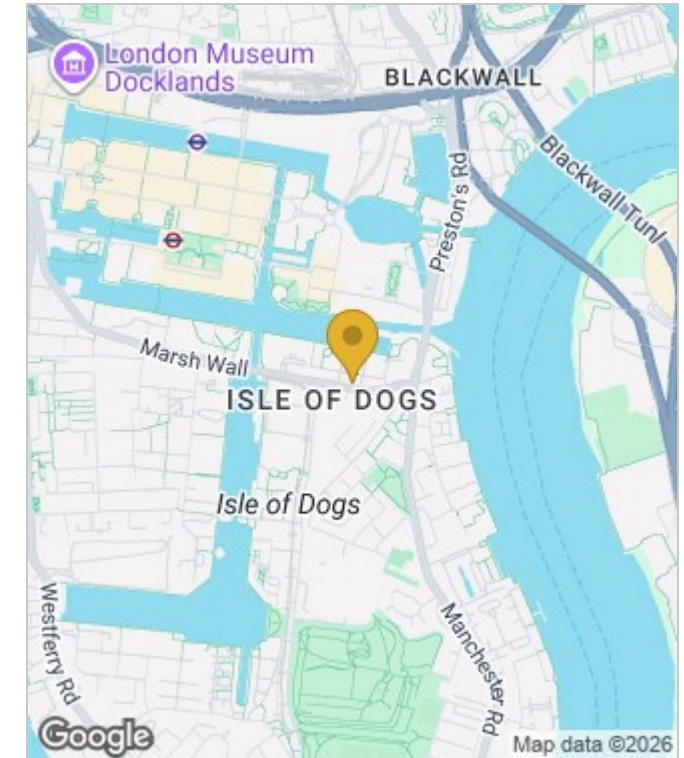


Council Tax Band: E

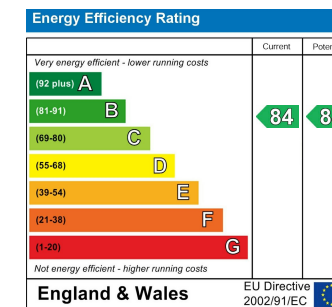
Floor Plans



Area Map



Energy Performance Graph



These particulars, whilst believed to be accurate are set out as a general outline only for guidance and do not constitute any part of an offer or contract. Intending purchasers should not rely on them as statements of representation of fact, but must satisfy themselves by inspection or otherwise as to their accuracy. No person in this firm's employment has the authority to make or give any representation or warranty in respect of the property.