



9 Moore Place Victoria Drive, Bognor Regis PO21 2EE
£416,000 Freehold



4 Bedrooms



2 Bathroom



2 Reception Rooms

SW

Sims Williams

Key Features

- Detached Family House
- Four Double Bedrooms
- Well Presented Throughout
- Modern Kitchen/Breakfast Room
- Spacious Lounge/Dining Room
- Conservatory Overlooking Rear Garden
- Principal Bedroom With En Suite
- Gas Fired Central Heating And uPVC Double Glazing
- Off Road Parking And Enclosed Rear Garden

EPC Rating

Current = C

Potential = C

Council Tax Band

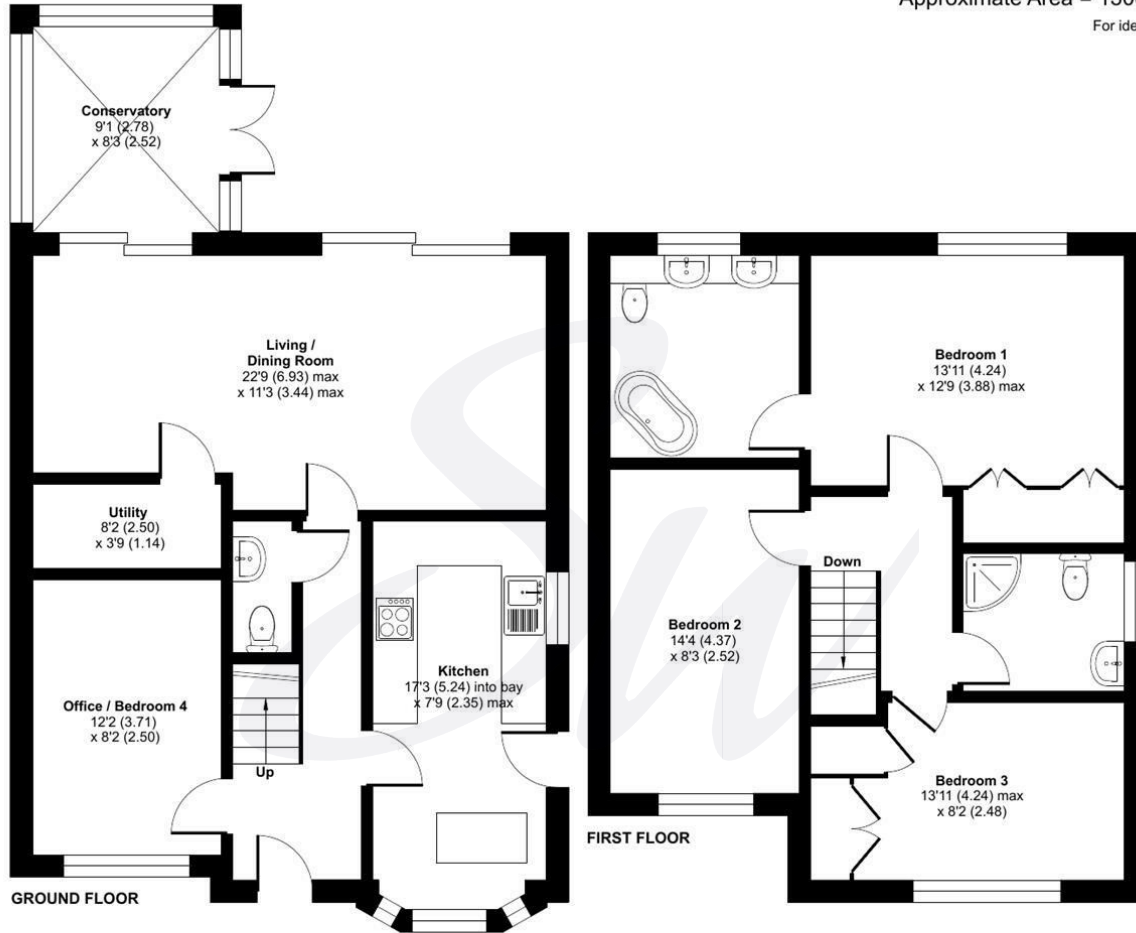
Band = E

Tenure - Freehold



Approximate Area = 1306 sq ft / 121.3 sq m

For identification only - Not to scale



Floor plan produced in accordance with RICS Property Measurement 2nd Edition, Incorporating International Property Measurement Standards (IPMS2 Residential). © nlichecom 2026. Produced for Sims Williams. REF: 1429599





simswilliams.co.uk

CHICHESTER

8-9 Southgate

Sales 01243 787868

Lettings 01243 836055

chichester@simswilliams.co.uk

WALBERTON

5 Maple Parade

Sales 01243 551368

Lettings 01243 836055

walberton@simswilliams.co.uk

ARUNDEL

8a High Street

Sales 01903 885678

Lettings 01903 881133

arundel@simswilliams.co.uk

BOGNOR REGIS

46 High Street

Sales 01243 862626

Lettings 01243 836055

bognor-regis@simswilliams.co.uk

Viewing Strictly by arrangement via the vendor's agent Sims Williams 01243 862626. These particulars are believed to be correct but their accuracy is not guaranteed and they do not form part of any contract.