



**11 Moor Road,
Staverton,
Totnes,
TQ9 6PB**

Guide Price
£95,000




MILLINGTON TUNNICLIFF

11 Moor Road, Staverton, Totnes, TQ9 6PB



1



1



1



A



EPC

61



FULL DESCRIPTION

A compact one bedroom semi detached bungalow located within this small cul de sac within the heart of Staverton Village. The bungalow offers an entrance hall, living room, double bedroom, kitchen and bathroom. Externally there are gardens at front and rear with the bungalow having steps or a ramped access from the road. Some decorative improvement is appropriate & the bungalow has Upvc double glazing and electric heating. No chain. EPC D 61.

ENTRANCE HALL

Upvc entrance door.

LIVING ROOM

12' 7" x 10' 11" (3.85m x 3.34m)

Upvc double glazed window to front, store cupboard.

BEDROOM

11' 7" x 9' 10" (3.55m x 3.0m)

Upvc double glazed window to rear, electric heater, built in cupboard.

KITCHEN

9' 10" x 7' 3" (3.00m x 2.23m)

Upvc double glazed windows to side and rear, range of base units and work surfaces, single drainer sink unit.

BATHROOM/WC

Upvc double glazed window to front, bath, wash basin and low level WC.

EXTERIOR

There are gardens at both front and rear.

TENURE

Freehold

COUNCIL TAX

Band A.

SERVICES

Mains water, electric and drainage. Broadband not connected.

SERVICE CHARGE

There is an annual service charge with the bungalow of £224.00.

RESTRICTIONS

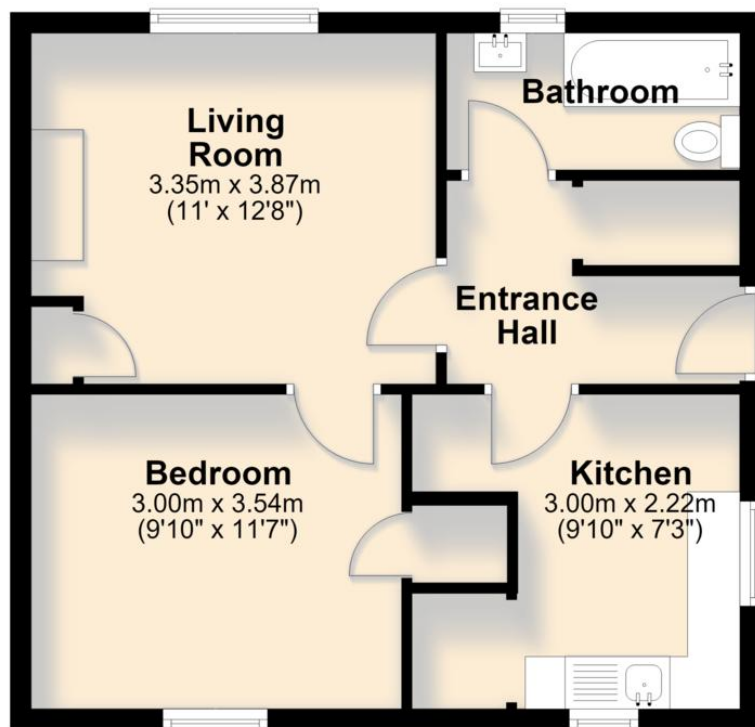
The property is being sold with no s157 restriction, but does have a restriction of it being used as a main residence and not a holiday home.



FLOORPLAN

Ground Floor

Approx. 43.6 sq. metres (469.7 sq. feet)



Total area: approx. 43.6 sq. metres (469.7 sq. feet)

CONTACT

19 Fore Street, Ivybridge, Devon,
PL21 9AB

E info@millingtontunnicliff.co.uk

T 01752 896020

www.millingtontunnicliff.co.uk



MILLINGTON TUNNICLIFF

