



Ground Floor Apartment

A very spacious 2 bedroom ground floor apartment set in a stunning rural location. This 1200+ Square foot apartment has a large kitchen breakfast room, lounge, master bedroom with en-suite, family bathroom, and access to landscaped communal gardens

Farringdon House | Exeter | EX5 2JD





PROPERTY TYPE

Ground Floor Apartment



SIZE

1264 SQFT



LOCATION

Farringdon



AGE

Victorian (1837 - 1901)



BEDROOMS

2



RECEPTION ROOMS

1



BATHROOMS

2



WARMTH

Electric Heating



PARKING

Off Road Parking



OUTSIDE SPACE

Communal Gardens



EPC RATING

56D



COUNCIL TAX BAND

E



in a nutshell...

- Spacious Apartment
- Master Bedroom with En-suite Shower Room
- Private Allocated Parking
- Large Kitchen
- Large Living Room
- Stunning Communal Grounds
- Rural Location
- Beautiful Architecture
- In Need Of Renovations





the details...

This two-bedroom ground floor apartment offers generous living accommodation and excellent potential for modernisation throughout.

The property features a particularly spacious kitchen fitted with an oven, hob and extractor fan. There is ample room for storage and food preparation, along with sufficient space to accommodate a breakfast table and chairs, making it a practical and sociable area. The kitchen is finished with laminate wood-effect flooring.

The living room is well-proportioned and benefits from a feature fireplace and two large windows, allowing plenty of natural light to fill the room.

There are two good-sized bedrooms, both carpeted. The principal bedroom enjoys the benefit of an en-suite shower room, while the second bedroom is also a generous size and well suited for guests, family members or home working.

The family bathroom comprises a shower, toilet and wash hand basin, and includes a useful storage cupboard. Both bathrooms are finished with tiled flooring.

Externally, the apartment benefits from an allocated parking space and large communal grounds situated to the front of the building. Farrington House is set within a pleasant rural location, offering a peaceful setting while still providing a well-laid-out and spacious home, ideal for those looking to modernise and add value.



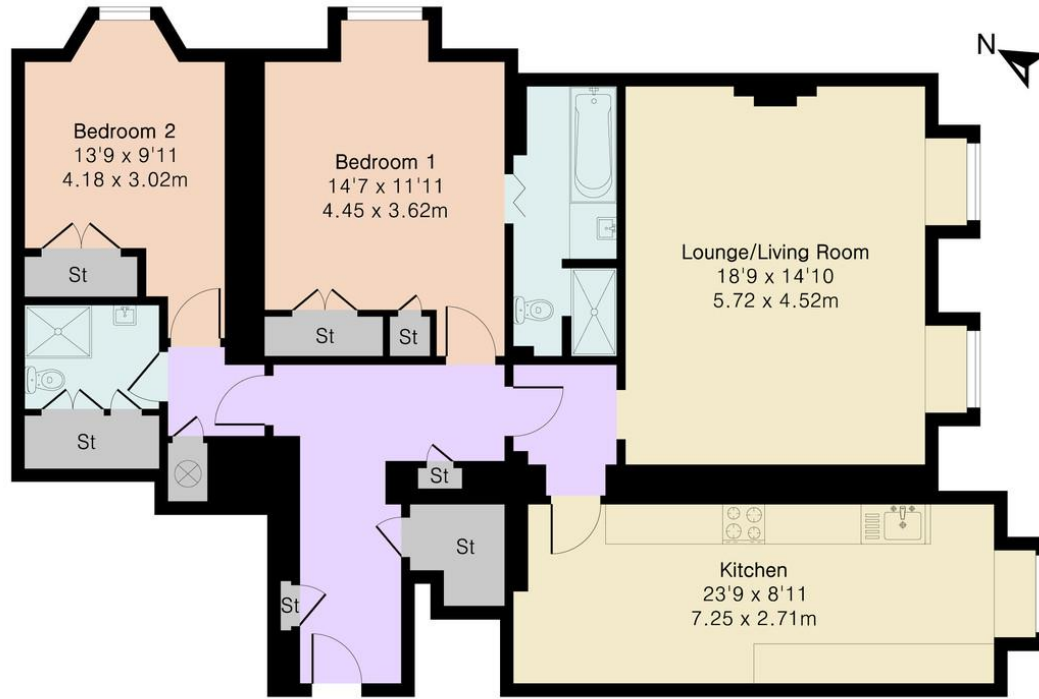
what the owner loves most...

The large windows in the property bring in lots of light and create a lovely feeling of grandeur



the floorplan...

Approximate Gross Internal Area 1264 sq ft - 117 sq m



Ground Floor Flat



Floor plan produced in accordance with RICS Property Measurement 2nd Edition. Although Pink Plan Ltd ensures the highest level of accuracy, measurements of doors, windows and rooms are approximate and no responsibility is taken for error, omission or misstatement. These plans are for representation purposes only and no guarantee is given on the total square footage of the property within this plan. The figure icon is for initial guidance only and should not be relied on as a basis of valuation.

complete.

Our note. For clarification we have prepared these sales particulars as a general guide and have not carried out a detailed survey nor tested the services, appliances or fittings. Room sizes should not be relied upon for carpets or furnishings. If there are any important matters which are likely to affect your decision to buy, please contact us before viewing this property. These particulars, whilst believed to be accurate, are set out as a general outline only for guidance and do not constitute any part of an offer or contract. Intending purchasers should not rely on them as statements of representation of fact, but must satisfy themselves by inspection or otherwise as to their accuracy. No person in the employment of Complete Property Services has the authority to make or give any representation or warranty in respect of the property.

SKETCH PLAN FOR ILLUSTRATIVE PURPOSES ONLY. All measurements and sizes and locations of walls, doors, window fittings and appliances are shown conventionally and are approximate only and cannot be regarded as being a representation either by the Seller or his Agent. We hope that these plans will assist you by providing you with a general impression of the layout of the accommodation. The plans are not to scale nor accurate in detail. © Unauthorised reproduction prohibited.

As part of the service we offer we may recommend ancillary services to you which we believe will help with your property transaction. We wish to make you aware that should you decide to proceed we will receive a referral fee. This could be a fee, commission, payment or other reward. We will not refer your details unless you have provided consent for us to do so. You are not under any obligation to provide us with your consent or to use any of these services, but where you do you should be aware of the following referral fee information. You are also free to choose an alternative provider. To find out more about this, please speak to a member of the team.



bear in mind...

This property would benefit greatly from modernisation inside and this is factored in to the marketing price





Need a more complete picture? Get in touch with your local branch...

Tel **01392 422500**
Email exeter@completeproperty.co.uk
Web completeproperty.co.uk

Complete
141 Younghayes Rd
Cranbrook
EX5 7DR

Are you selling a property too? Call us to get a set of property details like these...

selling

letting

land &
new homes

signature
homes

complete.