

Aldreds
Estate Agents



16 West Road

Caister-On-Sea, Great Yarmouth, NR30 5AX

Price Guide £385,000



16 West Road

Caister-On-Sea, Great Yarmouth, NR30 5AX

GUIDE PRICE £385,000-£395,000 Sitting on the highly desirable West Road, we are delighted to offer this extremely well presented and extended three bedroom detached bungalow on a large plot. The property has been lovingly expanded and renovated by the current owners and an internal inspection is essential. You enter in to a large hallway. The Lounge/Diner/Kitchen is nearly nine metres long and offers a fantastic and flexible living and entertaining space. There is also a master bedroom with ensuite shower room, two further bedrooms and a family bathroom. Gas central heating and double glazing. Large driveway to front offering parking for multiple vehicles leading to garage. The rear garden is large with porcelain patio and lawned area. There is planning permission granted for a loft conversion and plans can be viewed on the Great Yarmouth Borough Council Planning Portal under ref 06/25/0858/HH

Entrance Hall

Inset ceiling lights, radiator, door to side, loft access

Lounge/Diner/Kitchen

29'5" x 14'1" ax 8'2" min (8.97 x 4.3max 2.5 min)

A fantastic living and entertaining space. Double glazed French doors to garden, door to side, double glazed windows to both sides, two radiators, airing cupboard with wall mounted gas boiler, base & wall units with worktops, plumbing for washing machine, plumbing for dishwasher, gas cooker point, sink with drainer, inset ceiling lights

Master Bedroom

13'9" plus recess x 11'11" (4.2 plus recess x 3.64)

Double glazed window to front aspect, radiator, door to

Ensuite Shower Room

Shower in cubicle, low level WC, hand basin, part tiled walls

Bedroom 2

11'11" x 10'5" plus recess plus bay (3.64 x 3.2 plus recess plus bay)

Bay double glazed window to front aspect, radiator

Bedroom 3

8'4" x 7'10" (2.56 x 2.41)

Double glazed window to side aspect, radiator





Bathroom

8'4" x 5'9" (2.56 x 1.77)

Recess cupboard, panel bath, hand basin, low level WC, opaque double glazed window to rear aspect, heated towel rail

Outside

To the front there is a large shingle driveway offering parking for multiple vehicles leading to garage, borders with bushes & shrubs. To the rear there is a larger than average rear garden with generous porcelain paved patio, large lawned garden with borders.

Tenure

Freehold

Services

Mains water, electricity, gas, drainage

Council Tax

Band C

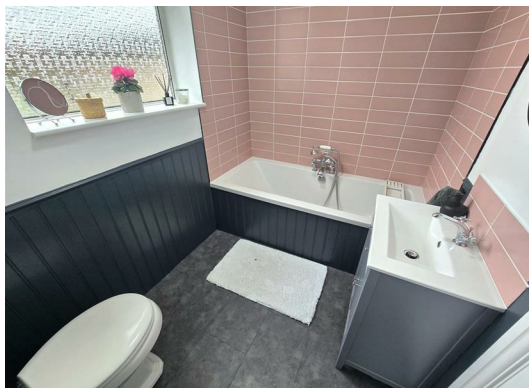
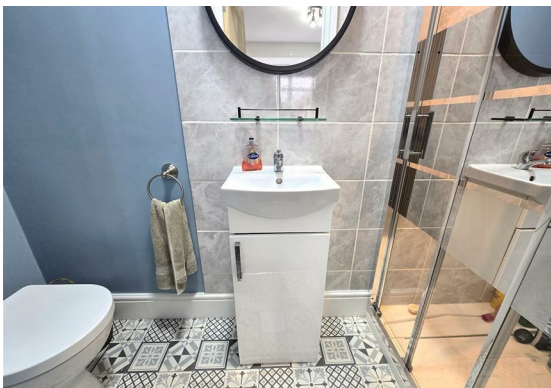
Location

Caister-on-Sea is a popular coastal village approximately 3 miles north of Great Yarmouth * There are a variety of local shops, pubs and restaurants * Post Office * First, Middle and High schools * Golf Course * Regular bus services to Great Yarmouth * Caister also boasts Roman Ruins * a sandy beach and its own Historic Castle.

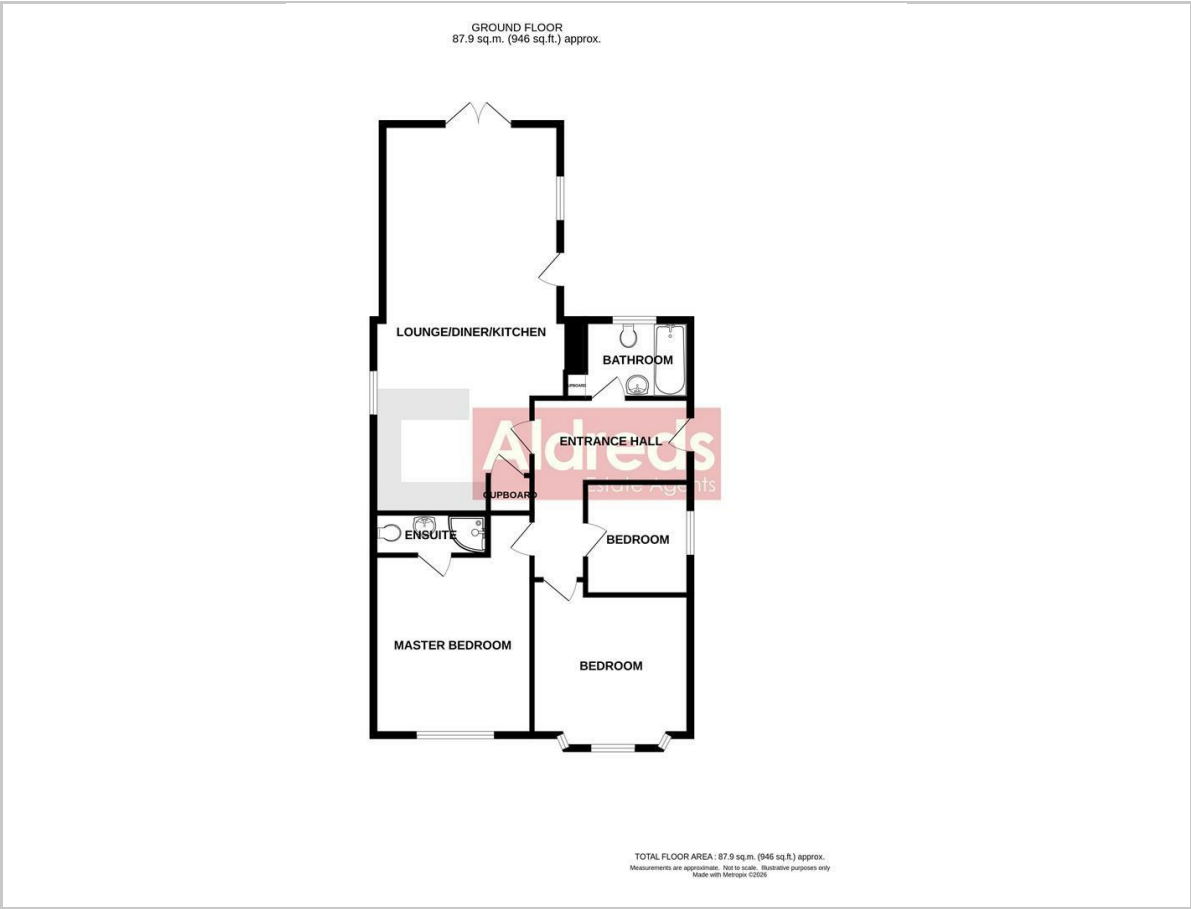
Directions

From the Yarmouth office head north along the A149 Caister Road, continue past the Yarmouth Stadium, at the roundabout turn right into Yarmouth Road, continue over the mini roundabout into High Street, turn left at the next mini roundabout, at the next mini roundabout with Caister Police Station turn left into West Road where the property can be found a short way along on the right hand side just beyond the turning to Grange Road marked by our 'For Sale' board.

Ref Y12599/01/26



Floor Plan



Viewing

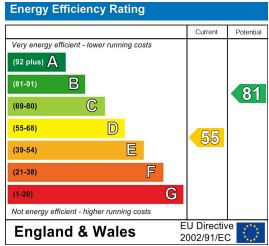
Please contact our Aldreds Great Yarmouth Office on 01493 844891 if you wish to arrange a viewing appointment for this property or require further information.

Disclaimer
These particulars are issued on an understanding that all negotiations shall be conducted through Messrs. Aldreds. Please note: Messrs. Aldreds for themselves and for the vendors or lessors of this property whose agents they are given notice that: 1. Particulars are set out as a general outline only for guidance of intending purchasers or lessees, and do not constitute nor constitute part of, an offer or contract. 2. All descriptions, dimensions, references to condition and necessary permissions for use and occupation, and other details are given without responsibility and any intending purchasers or tenants should not rely on them as statements or representations of fact but must satisfy themselves by inspection or otherwise as to the correctness of each of them. 3. No person in the employment of Messrs. Aldreds has any authority to make or give any representation or warranty whatever in relation to this property. 4. If you are proposing to visit the property and are travelling some distance please check with Aldreds on the issue of availability prior to travelling. 5. Aldreds Property Consultants and associated services may offer additional services to the prospective purchaser for which they will be entitled to receive a commission. Aldreds are pleased to be working with Mortgage Advice Bureau. They're an award-winning mortgage broker with over 1,400 advisers across the UK, and have access to over 12,000 mortgage products from over 90 lenders. Aldreds Estate Agents Ltd receive a commission of £200 on each completed case. Your home may be repossessed if you do not keep up repayments on your mortgage. There may be a fee for mortgage advice. The actual amount you pay will depend upon your circumstances. The fee is up to 1%, but a typical fee is 0.3% of the amount borrowed. Mortgage Advice Bureau is a trading name of Mortgage Seeker Limited which is an appointed representative of Mortgage Advice Bureau Limited and Mortgage Advice Bureau (Derby) Limited which are authorised and regulated by the Financial Conduct Authority. Mortgage Seeker Limited Registered Office: Lovewell Blake, Sixty Six North Quay, Great Yarmouth, Norfolk, NR30 1HE. Registered in England Number: 03721415. 6. Potential purchasers should check with their providers that the broadband and mobile phone coverage they would require is available.

Area Map



Energy Efficiency Graph



17 Hall Quay, Great Yarmouth, Norfolk, NR30 1HJ
Tel: 01493 844891 Email: yarmouth@aldreds.co.uk <https://www.aldreds.co.uk/>
Registered in England Reg. No. 08945751 Registered Office: 17 Hall Quay, Great Yarmouth, Norfolk NR30 1HJ
Directors: Mark Duffield B.Sc. FRICS. Dan Crawley MNAEA Paul Lambert MNAEA