



**Poplar Grove, Maidstone, Kent, ME16 0AL**

**Price £425,000**





**\*\* A SPACIOUS AND WELL-MAINTAINED THREE BEDROOM SEMI-DETACHED CHALET BUNGALOW SITUATED IN A MOST SOUGHT AFTER SETTING IN ALLINGTON \*\***

Page & Wells are delighted to bring to the market this rarely available chalet bungalow, which benefits from no forward chain implications. The ground floor features a spacious living room, two bedrooms (or further reception room), bathroom, separate WC and kitchen. There is an additional large bedroom on the first floor. Externally, there is a driveway providing ample off-road parking and a good sized garden to the rear. The property is well-placed for all local amenities and an internal viewing is highly recommended. Contact PAGE & WELLS King Street Office on 01622 756703. Tenure: Freehold. EPC Rating: D. Council Tax Band: D.



## KEY FEATURES

- Three bedrooms
- Good sized garden
- Driveway
- Popular Allington location
- No forward chain

## ACCOMMODATION

### Ground Floor:

#### Entrance Hall

Living Room 14'4 x 10'8 (4.37m x 3.25m)

Kitchen 11'5 x 9'9 (3.48m x 2.97m)

Bathroom

Separate WC

Bedroom Two 12'10 x 10'2 (3.91m x 3.10m)

Bedroom Three/Dining Room 9'11 x 9'1 (3.02m x 2.77m)

### First Floor:

Bedroom One 17'1 x 10'10 (5.21m x 3.30m)


## EXTERNALLY

The property enjoys good frontage with a driveway providing ample off-road parking facilities. There is a generous sized garden to the rear.

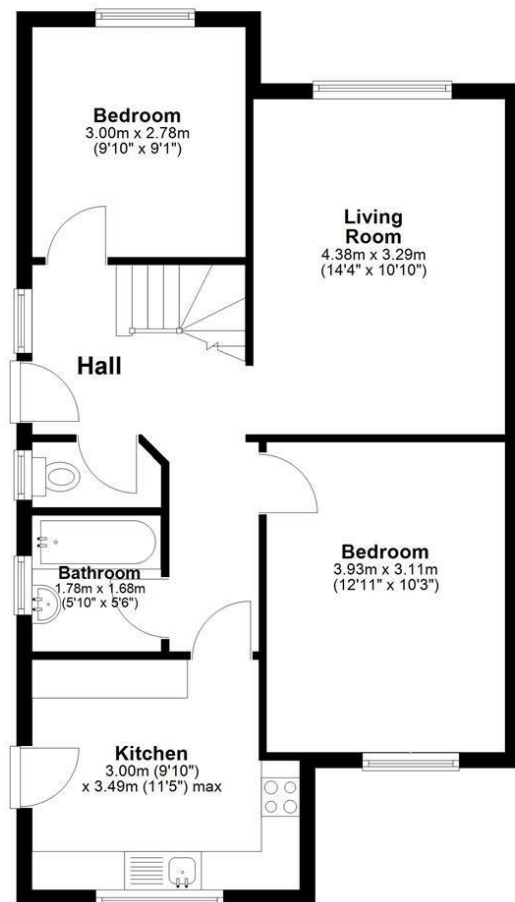
## VIEWING

Viewing strictly by arrangements with the Agent's Head Office: 52-54 King Street, Maidstone, Kent ME14 1DB.  
Tel: 01622 756703.

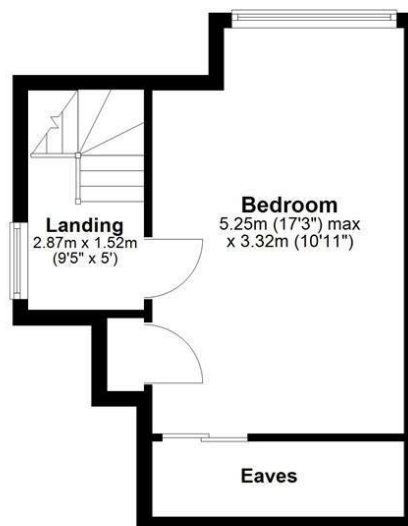
### Energy Efficiency Rating

	Current	Potential
Very energy efficient - lower running costs		
(92 plus) <b>A</b>		
(81-91) <b>B</b>		<b>81</b>
(69-80) <b>C</b>		
(55-68) <b>D</b>	<b>55</b>	
(39-54) <b>E</b>		
(21-38) <b>F</b>		
(1-20) <b>G</b>		
Not energy efficient - higher running costs		
<b>England &amp; Wales</b>	EU Directive 2002/91/EC	

## Ground Floor



## First Floor



Total area: approx. 86.6 sq. metres (932.1 sq. feet)

