



## Goodman Crescent, SW2

£2,200 Per calendar month

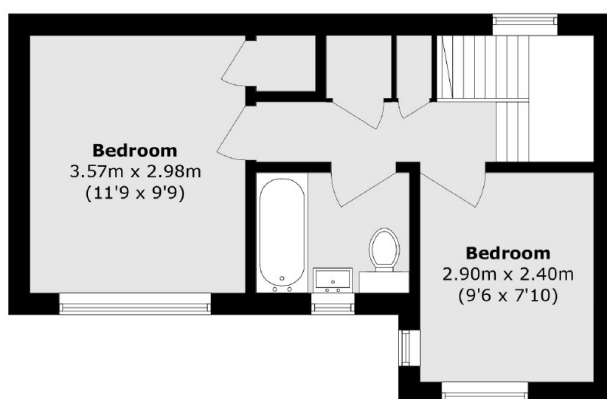
A great two bedroom house done to a high standard throughout, offering a modern kitchen and large reception room, leading out to a private front garden. The property also comes with off street parking. This property is perfect for two professionals or a couple looking for great transport links.

Goodman Crescent is conveniently located moments away from Streatham Hill station providing links to London Victoria via Clapham Junction.

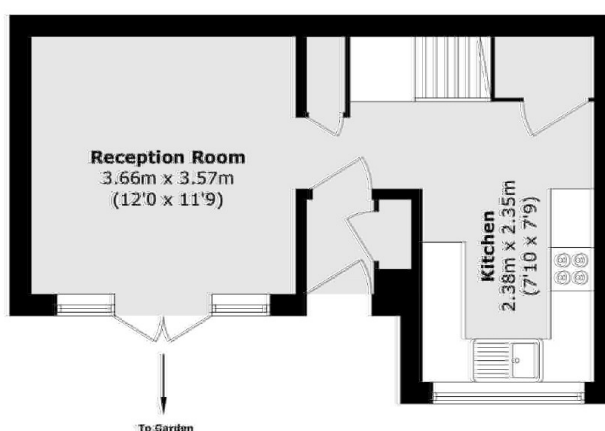
### Features

Two Double Bedroom House  
Refurbished Throughout  
Private Front Garden  
Off Street Parking  
Prime Location  
Integrated Appliances

# Goodman Crescent, London, SW2



**First Floor**



**Ground Floor**

Total area (approx.): 61.5 sq. m (662.0 sq. ft.)