



**OVER 60?**

Secure this property  
for up to **59% less!**

**Guide Price**

**£230,000**

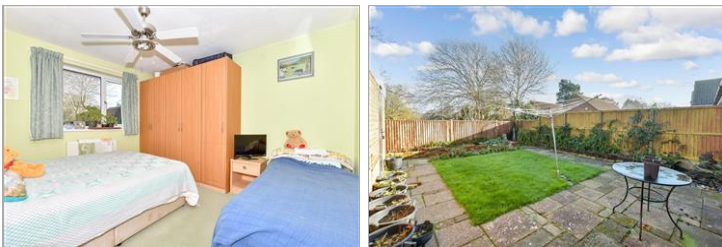
**Freehold**

2x  1x  1x 

**Copperfields, Lydd,  
Kent, TN29**

*Wards*  
Helping you move forwards





## Main features

- Fabulous location central to the town centre
- Stunning open aspect to the rear with unspoilt rural views
- Great lounge to relax in
- Both bedrooms are doubles
- Manageable rear garden with raised vegetable plot

## Accommodation

### GROUND FLOOR

Entrance Hall

Kitchen: 11'5 x 7'8 (3.48m x 2.34m)

Lounge: 18'9 x 11'8 (5.72m x 3.56m)

Inner Hallway

Bathroom

Bedroom 1: 12'2 x 10'7 (3.71m x 3.23m)

Bedroom 2: 8'7 x 8'2 (2.62m x 2.49m)

### OUTBUILDING

Garage

### OUTSIDE

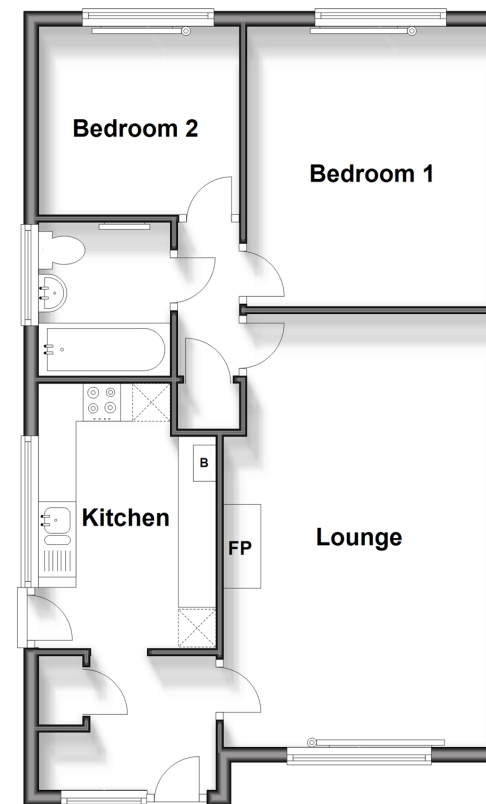
Off Road Parking

Car Port

Front & Rear Gardens

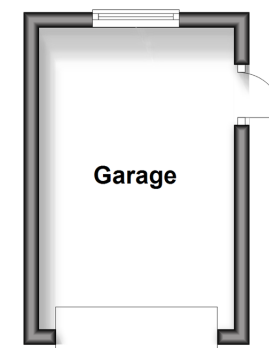
### Ground Floor

Approx. 59.1 sq. metres (636.2 sq. feet)



### Outbuilding

Approx. 10.4 sq. metres (112.1 sq. feet)



**Call New Romney - 01797 363745 ■ [wardsof Kent.co.uk](http://wardsof Kent.co.uk)**

- Legal advice should be taken to verify fixtures/fittings, planning, alterations and/or lease details
- Appliances & services are untested, dimensions are approximate and floor plans are not to scale
- Through a Homewise Home For Life Plan people aged 60+ can secure this property for up to 59% less, by purchasing a Lifetime Lease.



13525861/20250604/SRH/CA