

Gatward Avenue

M Maidenhead • • SL6 3UW
Offers In Excess Of: £650,000



coopers
est 1986

Gatward Avenue

Maidenhead • • SL6 3UW

WITHIN CATCHMENT TO THE POPULAR LOWBROOK ACADEMY

A well presented four-bedroom detached home located in a quiet cul-de-sac within a highly sought-after area.

The downstairs accommodation includes a bright and airy conservatory/dining room, a spacious reception room, a downstairs cloakroom, and a contemporary kitchen with integrated appliances. There is also an additional reception room suitable for use as an office. Upstairs, the family bathroom serves four generous bedrooms, with the master bedroom benefiting from built-in storage and an en-suite shower room. At the front of the house, there is a spacious tandem garage and a block-paved driveway. To the rear you'll discover a south facing private and beautifully landscaped garden with lawn and patio.

The property enjoys excellent proximity to local schools like Lowbrook Academy. Additionally, it provides convenient access to a variety of shops, restaurants, green spaces, and well-connected transport links.

Quiet Cul-de-Sac

Detached

Tandem garage

Driveway parking

Large Bright Conservatory

Ensuite to Master Bedroom

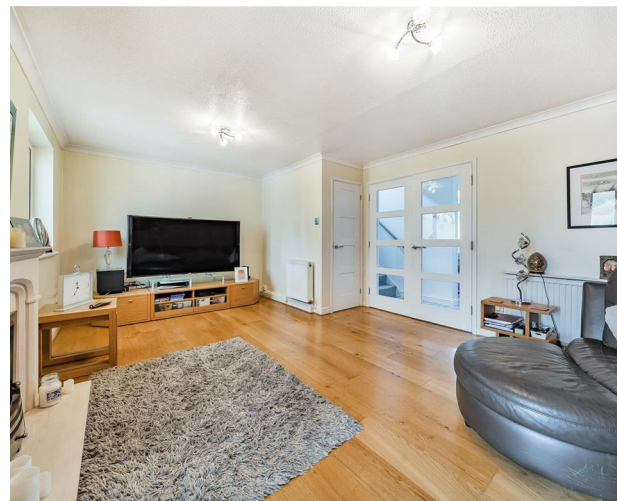
• Catchment for Well Regarded Primary and Secondary Schools

Four Reception Rooms

Great Local Amenities

Locality to Major Transport Links M4, M25, A404

These particulars are intended as a guide and must not be relied upon as statements of fact. Your attention is drawn to the Important Notice on the last page.







Schools:

Lowbrook Academy 0.1 miles
Manor Green School 0.1 miles



Train:

Maidenhead Station 1.7 miles
Furze Platt Station 2.2 miles
Taplow Station 3.5 miles



Car:

M4, A40, M25, M40



Council Tax Band:

E

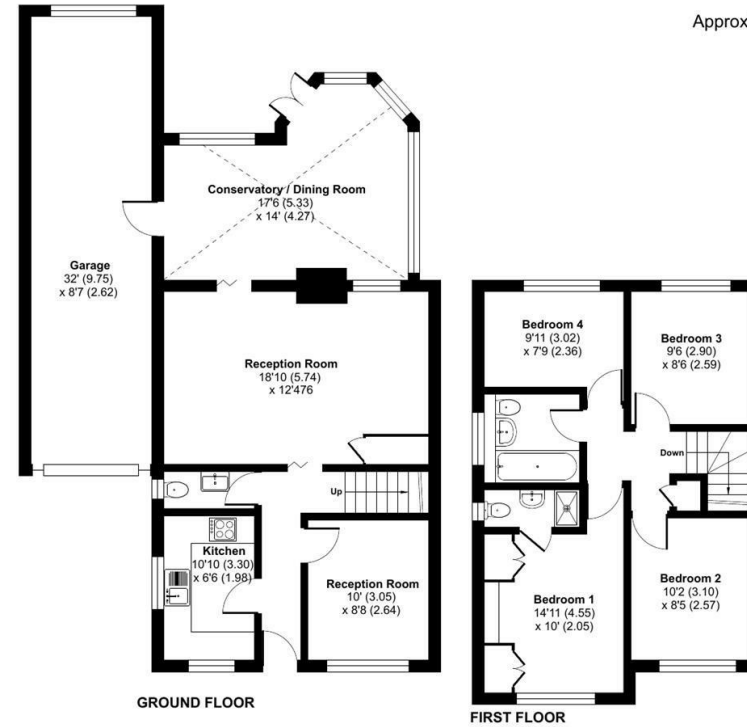
(Distances are straight line measurements from centre of postcode)



Gatward Avenue, Maidenhead, SL6

Approximate Area = 1238 sq ft / 115 sq m
Garage = 277 sq ft / 25.7 sq m
Total = 1515 sq ft / 140.7 sq m

For identification only - Not to scale



Floor plan produced in accordance with RICS Property Measurement Standards incorporating International Property Measurement Standards (IPMS2 Residential). © nichecom 2024. Produced for Coopers. REF: 1141590

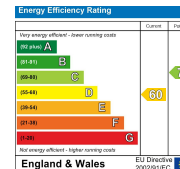


01628 232 550

42 Queen Street, Maidenhead,
, SL6 1HZ

maidenhead@coopersresidential.co.uk

CoopersResidential.co.uk



Important Notice: These particulars, whilst believed to be accurate are set out as a general outline only for guidance and do not constitute any part of an offer or contract. Intending purchasers should not rely on them as statements or representation of fact, but must satisfy themselves by inspection or otherwise has the authority to make or give any representation or warranty in respect of the property.

coopers
est 1986