



Bespoke 51 Swepstone Close, Lower Earley
ESTATE AGENTS £600,000



51 Swepstone Close

Lower Earley, Reading

Bespoke – By Mark Heneghan. Stylish four-bed detached home in Lower Earley. Close to Hawkedon Primary, Maiden Erlegh, parks and shops. En-suite to main, modern kitchen, private garden, garage & driveway. Quiet cul-de-sac.

Council Tax band: E

Tenure: Freehold

EPC Energy Efficiency Rating: C

EPC Environmental Impact Rating: C

- Walking distance Maiden Erlegh School, shops & amenities
- Four generous bedrooms, all well-proportioned
- En-suite to main bedroom plus stylish family bathroom
- Modern kitchen with integrated appliances and breakfast bar
- Generous living room with fireplace and garden access
- Separate dining room ideal for entertaining or home working
- Recently refitted bathrooms with standout design
- Driveway parking and integral garage
- Private rear garden with patio, lawn and side access
- Desirable cul-de-sac setting in sought-after Lower Earley location

Entrance Hall

A welcoming and well-lit hallway sets the tone for this spacious family home. Finished with patterned flooring underfoot and a striking feature wall, the entrance offers access to the main living areas, ground floor WC, and first floor via a carpeted staircase. Practical and stylish, it offers a smart first impression with space to greet guests or organise coats and shoes.

Cloakroom

A thoughtfully styled downstairs WC, perfect for guests, featuring a modern white suite with wash basin and toilet. Natural light flows in through a leaded window, highlighting the characterful décor including patterned feature tiling, bold wall tones, and whimsical bee-print wallpaper. A charming and functional addition to the ground floor.

Living Room

14' 10" x 11' 7" (4.52m x 3.52m)

A warm and inviting space, the living room set to the rear of the home and opens directly onto the garden via glazed French Windows. This character-filled room features rich navy tones, Orla Kiely-inspired wallpaper accents, and a striking tiled fireplace that forms a stylish focal point. Large enough to accommodate two full sofas and a reading nook, it's a perfect space to relax, unwind, or entertain. Natural light floods in through dual aspect windows, creating a bright yet cosy atmosphere year-round.

Dining Room

10' 11" x 9' 10" (3.33m x 3.00m)

Beautifully styled and full of personality, the dining room provides a warm and welcoming space for family meals or entertaining. With its elegant panelling, contemporary hexagonal feature wallpaper, and rich green tones, the room strikes a perfect balance between character and comfort. A large window allows natural light to flood in, while the generous proportions easily accommodate a full-size table and additional furniture.





Kitchen Breakfast room

13' 7" x 10' 10" (4.15m x 3.31m)

Stylish and highly practical, this recently updated kitchen features sleek dark cabinetry, solid wood-effect worktops, and patterned tile splashbacks that add a contemporary edge. Integrated appliances include a fridge freezer, oven, gas hob and extractor, with plumbing available for a washing machine – cleverly relocated to the garage to reduce noise and free up space. A large window over the sink and glazed rear door bring in plenty of natural light, while a built-in breakfast bar offers the ideal spot for casual dining or morning coffee.

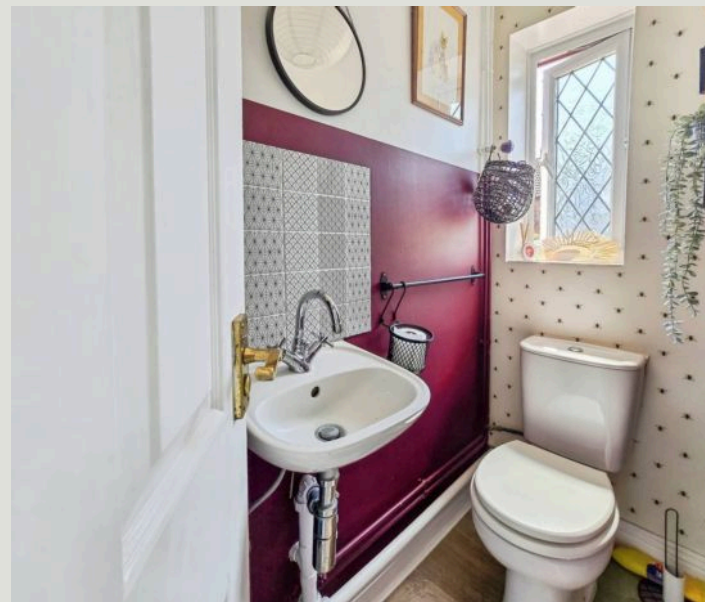
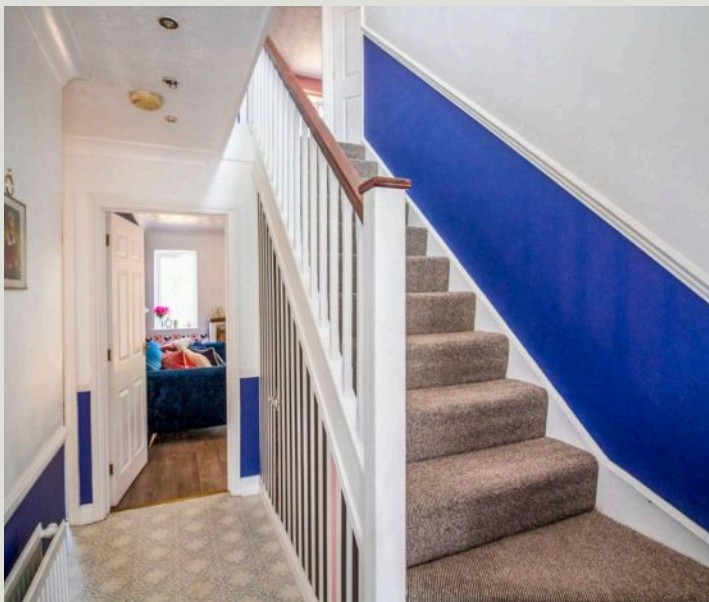
First Floor Landing

Bright and airy with natural light from two side-facing windows, the landing provides access to all four bedrooms, the family bathroom, and loft hatch. The crisp white walls and deep blue panelling echo the home's vibrant yet tasteful styling, while the generous layout avoids the typical cramped feel of many upstairs hallways.

Bedroom One

13' 7" x 9' 8" (4.15m x 2.94m)

A generous principal bedroom with ample space for a king-size bed and full suite of furniture. Stylishly decorated with soft two-tone walls and an elegant feature wallpaper, the room is bathed in natural light from a large front-facing window. The space feels both calm and contemporary – ideal for restful evenings. This room also benefits from a recently refitted en-suite shower room for added convenience.



En-Suite

Recently refitted with a bold and stylish finish, the en-suite combines striking design with everyday practicality. Featuring a walk-in shower with glass enclosure and hexagonal tiling, a modern white suite, and deep green walls paired with floral detailing, the space feels vibrant yet elegant. A clever recessed shelf and contemporary fittings complete the look, making this a standout private retreat for the main bedroom.

Bedroom Two

11' 3" x 8' 9" (3.43m x 2.67m)

A bright and spacious double room positioned at the front of the home, Bedroom Two enjoys a lovely leafy outlook and excellent natural light through a wide leaded window. Finished in soft blush tones with a textured feature wall, the room includes built-in wardrobes for generous storage and still offers plenty of space for additional furniture or a desk—ideal for growing children or teenagers.

Bedroom Three

10' 6" x 8' 6" (3.21m x 2.60m)

Positioned at the front of the property, Bedroom Three is a cheerful and adaptable double room, currently styled as a vibrant children's space. A wide window frames the view over the front and fills the room with natural light. There's ample room for a bed, desk, and wardrobes, making it ideal as a child's bedroom, guest room or home office.

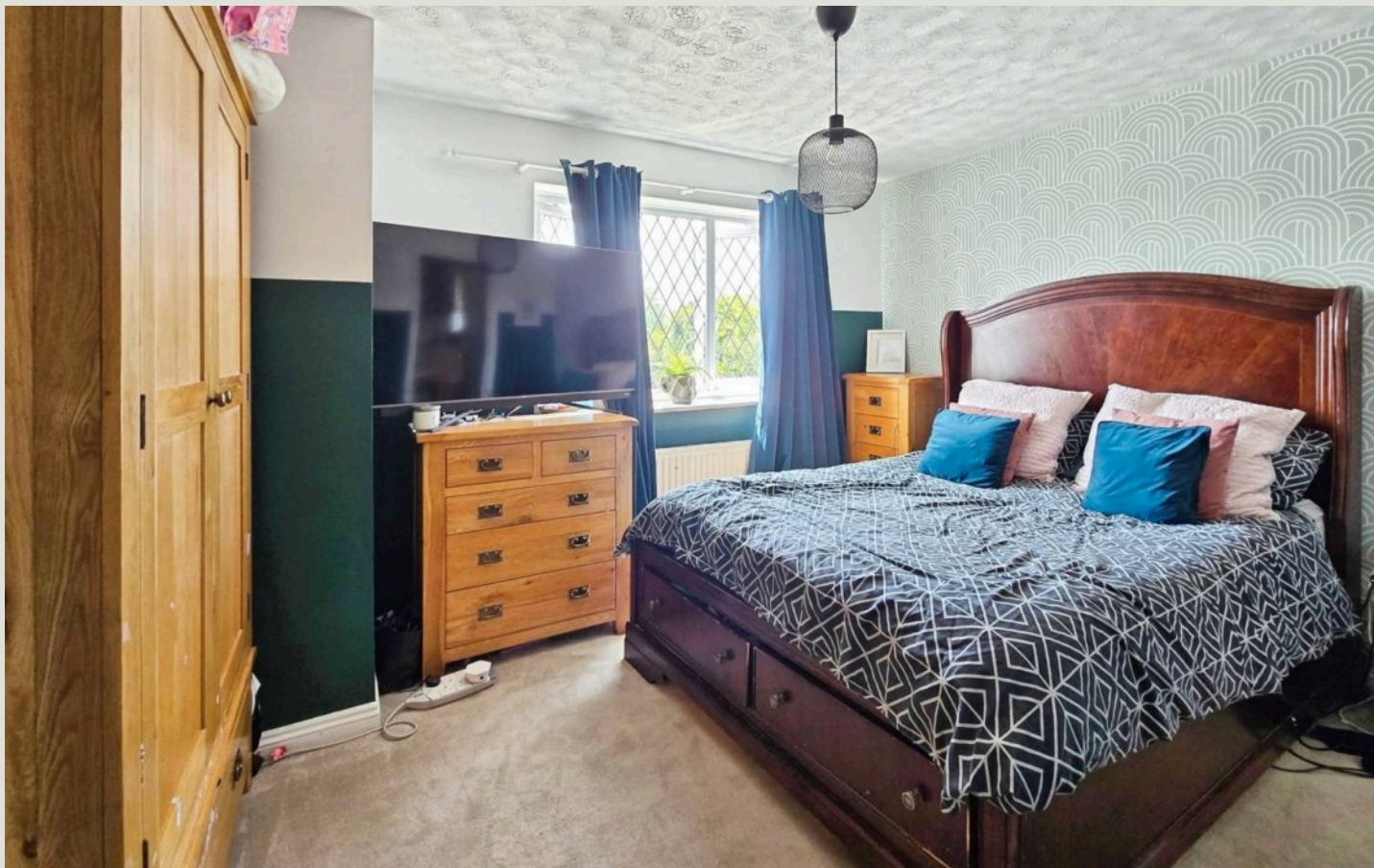
Bedroom Four

8' 9" x 8' 3" (2.67m x 2.51m)

Overlooking the rear garden, Bedroom Four is a cheerful and colourful space currently arranged as a fun children's room. It easily accommodates a single bed, wardrobe, and a range of toys or study furniture. The bright décor and floral feature wall give it a playful charm, while the window brings in plenty of natural light throughout the day.

Bathroom

Recently refitted with bold flair, the family bathroom blends striking design with modern comfort. The stylish monochrome tilework wraps around the bath area, contrasting beautifully with the statement vertical stripe feature wall. A sleek white suite includes a panelled bath with shower over, vanity basin unit, and low-level WC, all set against rich wood-effect flooring and bathed in natural light from the large rear-facing window. A standout space that adds real character to the home.



Entrance Hall

A welcoming and well-lit hallway sets the tone for this spacious family home. Finished with patterned flooring underfoot and a striking feature wall, the entrance offers access to the main living areas, ground floor WC, and first floor via a carpeted staircase. Practical and stylish, it offers a smart first impression with space to greet guests or organise coats and shoes.

Cloakroom

A thoughtfully styled downstairs WC, perfect for guests, featuring a modern white suite with wash basin and toilet. Natural light flows in through a leaded window, highlighting the characterful décor including patterned feature tiling, bold wall tones, and whimsical bee-print wallpaper. A charming and functional addition to the ground floor.

Living Room

14' 10" x 11' 7" (4.52m x 3.52m)

A warm and inviting space, the living room set to the rear of the home and opens directly onto the garden via glazed French Windows. This character-filled room features rich navy tones, Orla Kiely-inspired wallpaper accents, and a striking tiled fireplace that forms a stylish focal point. Large enough to accommodate two full sofas and a reading nook, it's a perfect space to relax, unwind, or entertain. Natural light floods in through dual aspect windows, creating a bright yet cosy atmosphere year-round.

Dining Room

10' 11" x 9' 10" (3.33m x 3.00m)

Beautifully styled and full of personality, the dining room provides a warm and welcoming space for family meals or entertaining. With its elegant panelling, contemporary hexagonal feature wallpaper, and rich green tones, the room strikes a perfect balance between character and comfort. A large window allows natural light to flood in, while the generous proportions easily accommodate a full-size table and additional furniture.

Kitchen Breakfast room

13' 7" x 10' 10" (4.15m x 3.31m)

Stylish and highly practical, this recently updated kitchen features sleek dark cabinetry, solid wood-effect worktops, and patterned tile splashbacks that add a contemporary edge. Integrated appliances include a fridge freezer, oven, gas hob,

