



YORKSHIRE'S  
**FINEST**  
HOMES COLLECTION

# 192 Low Road Thornhill Dewsbury

Offers In The Region Of

## £499,000

- Detached, three Bedroom Property
- Beautifully maintained with high-quality finishes throughout
- Paved driveway and additional garden space to the side
- Set in a sought-after area with excellent access to local amenities and transport

Immaculately Presented Family Home with  
Stunning Views

This beautifully maintained and immaculately presented home boasts spectacular views and offers flexible family living across two levels. Set in a desirable location, the property features a stylish modern kitchen-diner, spacious living areas, and excellent outdoor space – perfect for both relaxing and entertaining.



## Immaculately Presented Family Home with Stunning Views

This beautifully maintained and immaculately presented home boasts spectacular views and offers flexible family living across two levels. Set in a desirable location, the property features a stylish modern kitchen-diner, spacious living areas, and excellent outdoor space – perfect for both relaxing and entertaining.

### Ground Floor

#### Entrance Hall

A warm and welcoming entrance hall with a modern grey mounted radiator and charming stained-glass window, creating a lovely feature. A wide staircase leads up to the first floor. An archway opens into the impressive kitchen-diner.

#### Kitchen / Diner

Superbly styled with modern wall and base units, integrated oven, electric hob, and dishwasher, plus ample space for an American-style fridge-freezer. This spacious room is ideal for entertaining or relaxing with family. A pantry-style cupboard offers additional useful storage. Beautiful views can be enjoyed through a large feature window.

### First Floor Landing

Provides access to the lounge, principal bedroom, and main bathroom.

#### Lounge

A truly spectacular space, accessed via double glass doors. Impeccably decorated with beautiful wood flooring and a charming log burner, this room is perfect for cosy evenings or entertaining guests. Double doors open out to a patio area – ideal for taking in the breathtaking views. Further double doors lead to an additional bedroom/study.

#### Bedroom / Study





Accessed from the lounge, this versatile room includes fitted wardrobes and a fold-down double bed, making it ideal as a guest bedroom, home office, or study.

#### Principal Bedroom

A luxurious and spacious room with fitted wardrobes and large windows framing stunning views. The ensuite bathroom is beautifully appointed with a four-piece suite including a deep bath, walk-in rainfall shower, vanity unit with wash basin, and WC.

#### Third Bedroom

A further generously sized double bedroom with modern fitted wardrobes and views over the rear garden. This room benefits from access to the stylish Jack-and-Jill house bathroom.

#### House Bathroom

Elegantly designed four-piece suite comprising a bath, walk-in electric shower, vanity unit with wash basin, and WC. Shared access from the landing and rear bedroom.

#### External Features

##### Gardens

To the rear is a terraced garden with a lawn and patio area – an ideal space for relaxing while enjoying the stunning views. To the front, a side garden and paved driveway offer additional outdoor space and off-road parking.











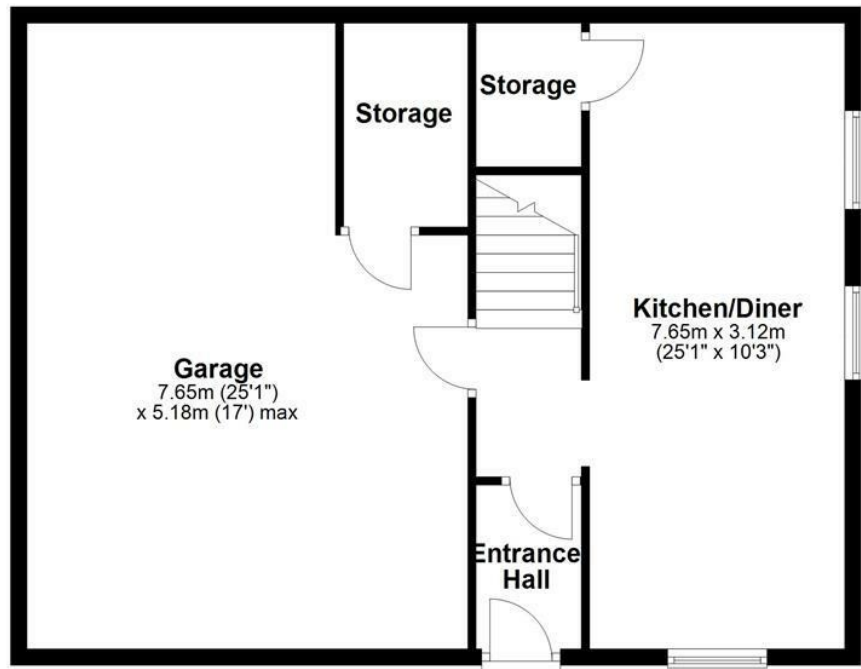






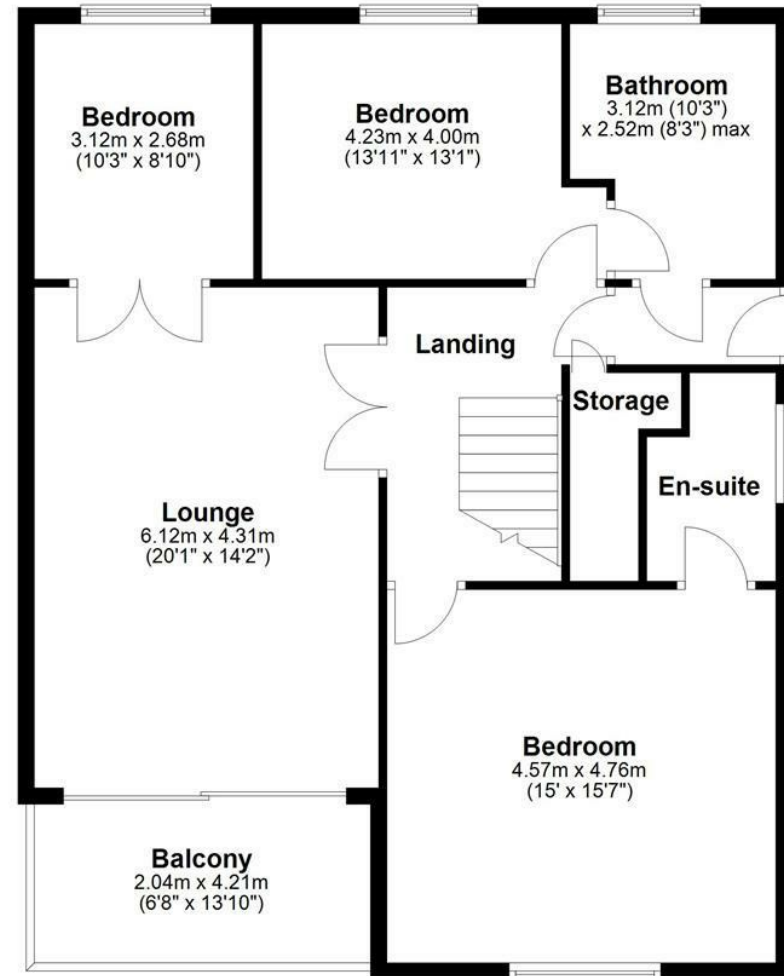
### Ground Floor

Approx. 72.6 sq. metres (781.2 sq. feet)



### First Floor

Approx. 98.5 sq. metres (1059.8 sq. feet)



Total area: approx. 171.0 sq. metres (1841.0 sq. feet)



YORKSHIRE'S  
**FINEST**  
HOMES COLLECTION

To view 192 Low Road Thornhill Dewsbury  
Call 01484 432 773  
Email [sales@yorkshiresfinest.co.uk](mailto:sales@yorkshiresfinest.co.uk)