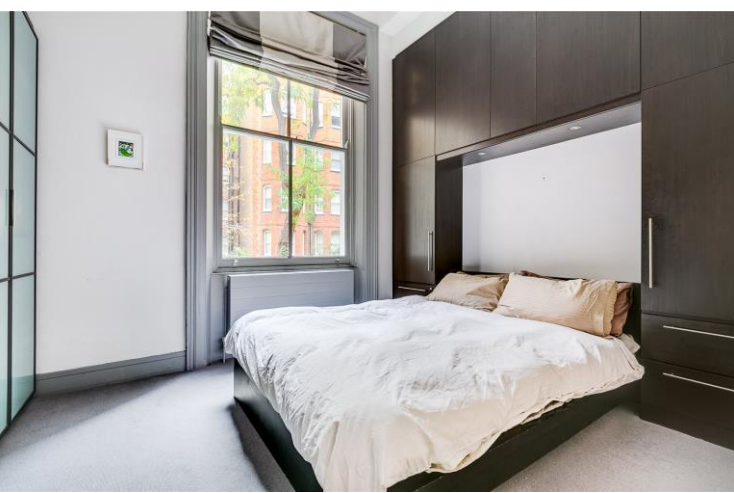




Nevern Square
Earls Court, SW5

CHESTERTONS





Chestertons are proud to present a lovely and charming apartment set on the raised ground floor of this well maintained Period building. The property benefits from very high ceilings, quality fixtures and fittings and a lot of natural light due to its large sash windows.

The flat comprises of one double bedroom with fitted wardrobes, a modern fully fitted bathroom, a fully fitted kitchen and a good size reception room that looks out to the front. The kitchen includes; gas hob, electric oven, dishwasher, integrated fridge freezer and washing machine.

Nevern Square is renowned for its beautifully kept garden, as well as being a quiet location of Earls Court. Both the District, Circle and Piccadilly Line are within walking distance from the property.

- A high quality flat set on the raised ground floor of this well maintained Period building
- 1 double bedroom, 1 bathroom, a full fitted kitchen and good size reception room
- High ceilings, quiet location opposite the communal garden square (STA) and good

£625 per week (£2,708.33 pcm)

Additional tenant charges apply (fees apply to non-AST tenancies only)

Tenancy Agreement Fee: £360

References per Tenant/Guarantor: £60

Inventory check (approx. £100 – £250 inc. VAT)

chestertons.co.uk/property-to-rent/applicable-fees

Energy Efficiency Rating		Current	Potential
95-100	A		
81-94	B		
69-80	C	73	74
55-68	D		
39-54	E		
21-38	F		
1-20	G		

Not energy efficient - higher running costs

EU Directive 2002/91/EC
England, Scotland & Wales

Minimum Term: 6 months
Deposit Required: £3,125.00
Local Authority: Royal Borough of Kensington & Chelsea
Council Tax Band: E
EPC Rating: C
Furnished

Chestertons South Kensington Lettings

44-48 Old Brompton Road
 South Kensington
 London
 SW7 3DY

lettings.southkensington@chestertons.co.uk

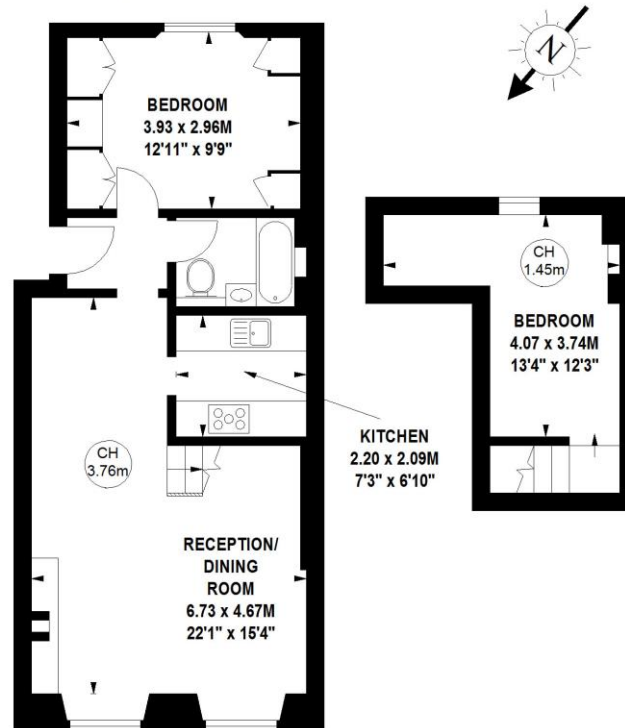
02075891244

Nevern Square, SW5

Approximate gross internal area

62.61 sq m / 674 sq ft

Key :
CH - Ceiling Height



Raised Ground Floor

First Floor

The floor plan is not to scale and measurements and areas shown are approximate and therefore should be used for illustrative purposes only. The plan has been prepared in accordance with the RICS code of Measuring Practice and whilst we have confidence in the information produced, it must not be relied on.

If there is any aspect of particular importance, you should carry out or commission your own inspection of the property.

Copyright of FeaturePRO.

