



VERONICA ROAD, SW17

£775,000

- Two Double Bedrooms
- Two Bathrooms
- Share of Freehold
- Private Entrance
- Large Private Garden
- Energy Rating: C





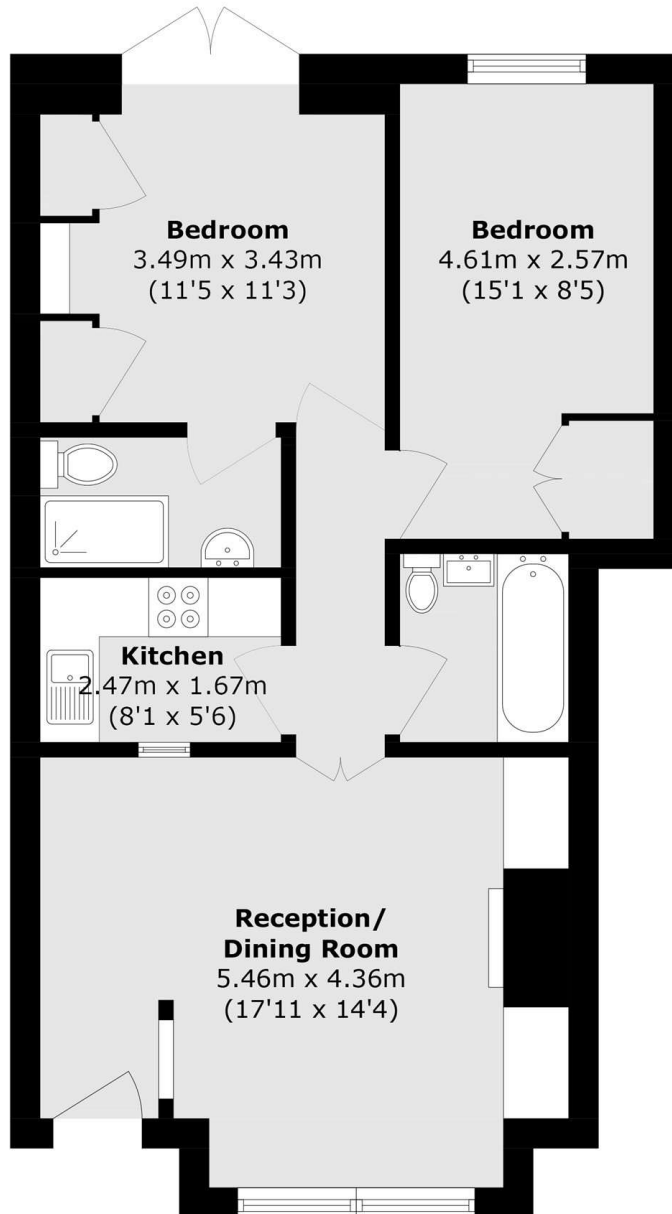
ABOUT THE HOME

A beautifully presented two double bedroom ground floor flat on the highly regarded Veronica Road in the Heaver Estate. This stunning flat is located in a handsome double fronted Victorian conversion, has a generous size garden, two bathrooms and the share of freehold. It also benefits from having its own private entrance.

Veronica Road is a popular residential road in the heart of Balham's popular Heaver Estate. Balham Mainline and underground station is within easy reach as are the vast array of shops, bars and restaurants local to the area. The green spaces of Tooting Common are also a short distance.







Total area (approx.): 62.1 sq. m (668.4 sq. ft)

JACKSONS BALHAM

8-11 Balham Station Road,
London, SW12 9SG
Sales: 020 8675 6555
Lettings: 020 8675 6565

Energy Rating: Appraisal We aim to make our particulars both accurate and reliable. However they are not guaranteed; nor do they form part of an offer or contract. If you require clarification on any points then please contact us, especially if you're traveling some distance to view. Please note that appliances and heating systems have not been tested and therefore no warranties can be given as to their good working order.