



Biscayne Avenue, E14

£646 Per week

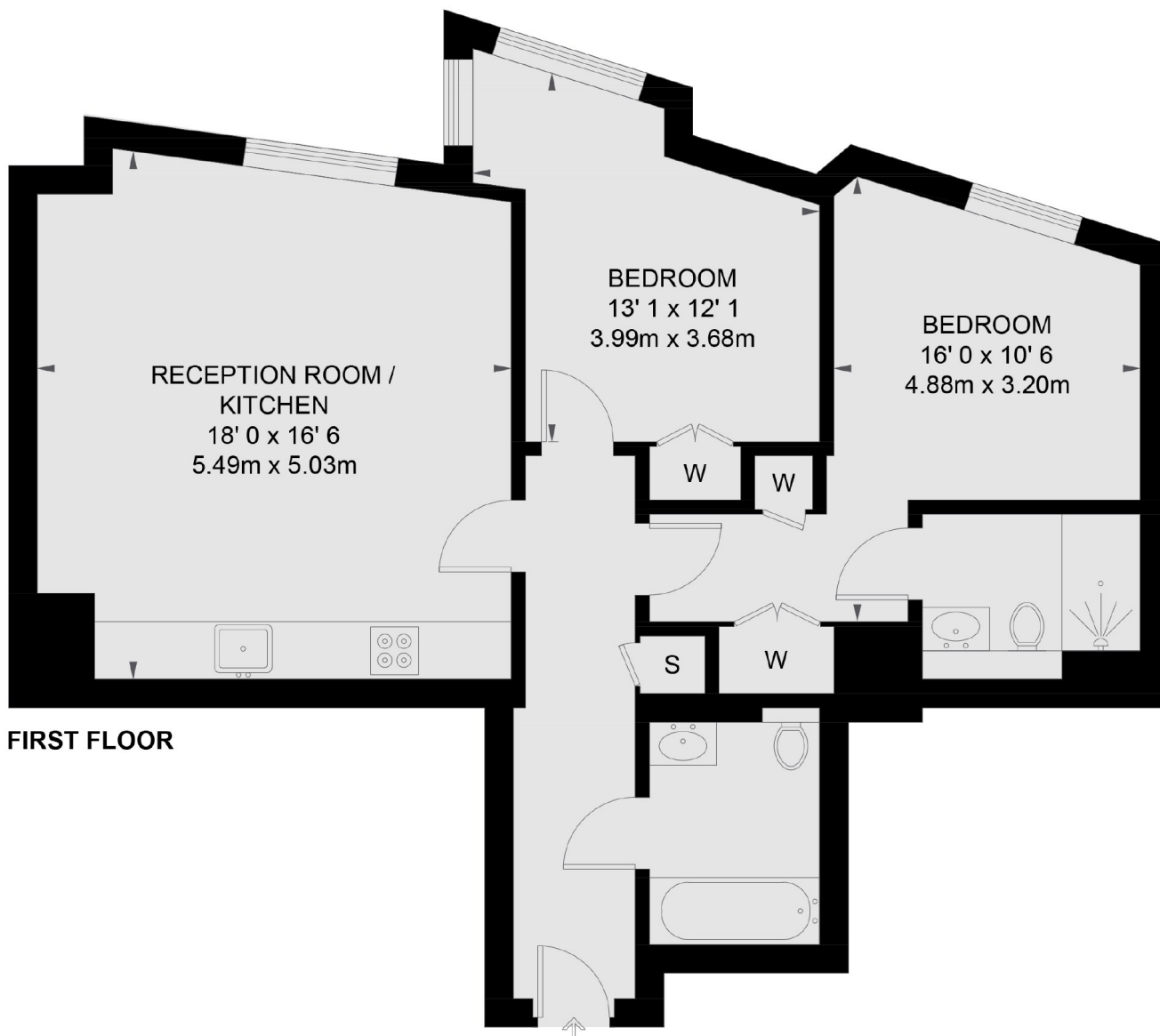
A bright two bedroom apartment on the first floor of this riverside development. This large apartment has an open plan reception room, floor to ceiling windows and an on-site swimming pool and gym.

Charrington Tower is moments from the shops, bars and restaurants of Canary Wharf, including the popular Le Relais de Venise.

Features

- Two Bedrooms
- Two Bathroom
- First Floor
- Wooden Flooring
- Residents Gym
- Concierge

Biscayne Avenue, London, E14



FIRST FLOOR

TOTAL APPROX. FLOOR AREA 786 SQ. FT. (73 SQ. M.)

Dexters

Canary Wharf
39 Westferry Road
London
E14 8JH
Lettings
0207 517 1190

Energy Rating: . We aim to make our particulars both accurate and reliable. However they are not guaranteed; nor do they form part of an offer or contract. If you require clarification on any points then please contact us, especially if you're traveling some distance to view. Please note that appliances and heating systems have not been tested and therefore no warranties can be given as to their good working order.

 **RICS** | Regulated
Estate Agent
and Letting Agent

dexters.co.uk