

Kimbolton Crescent, Hertfordshire, SG2 8RW

£149,995

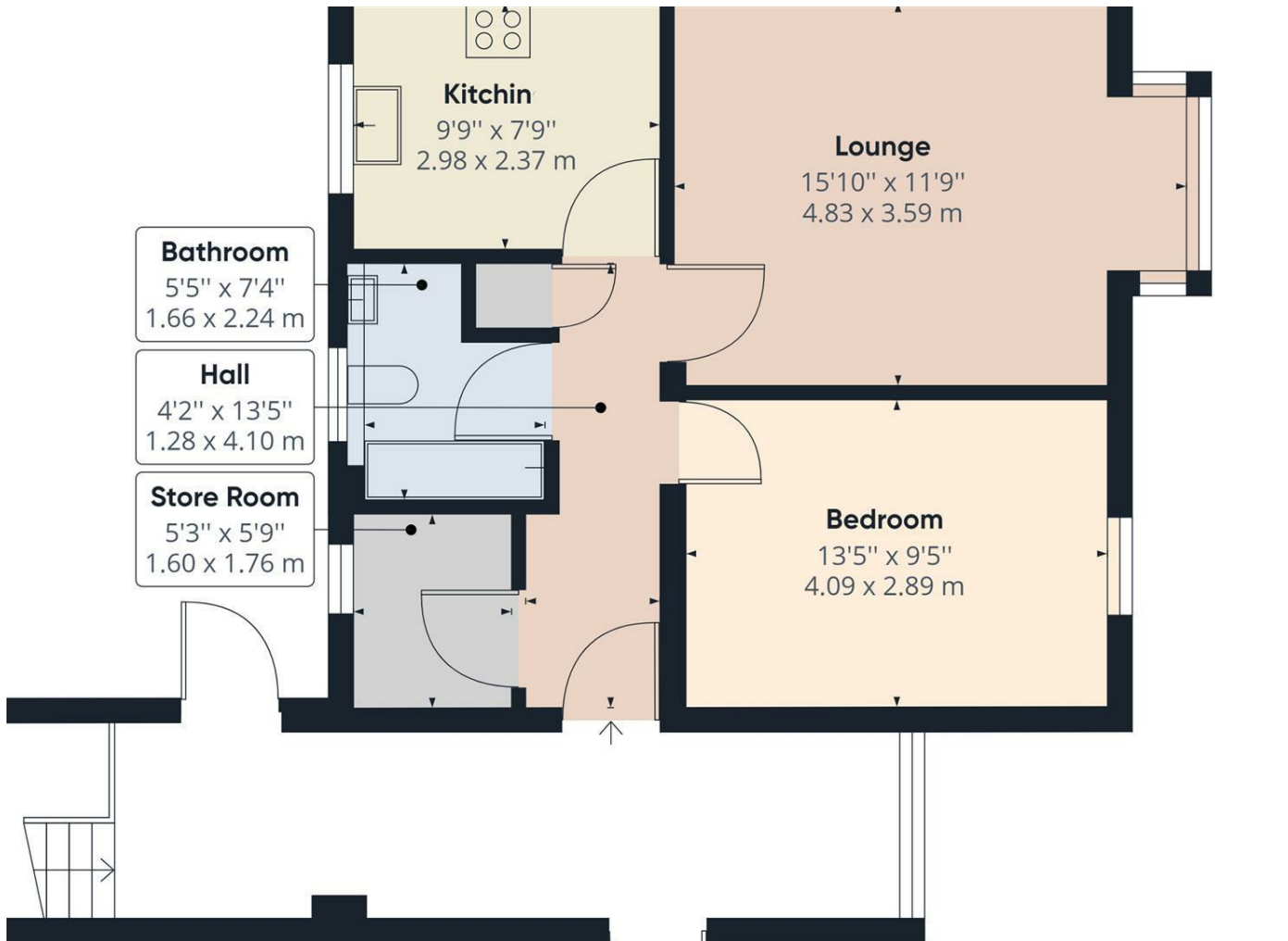


Offered for sale at Offers in Excess of £149,995 is this one bedroom first floor flat which is situated in the Broadwater area and within walking distance of a Tesco supermarket along with good access to the A1(M) and A602. The property offers a good sized lounge, double glazing and gas heating along with residents communal parking.



86 High Street
 Stevenage
 Hertfordshire
 SG1 3DW
 01438 728444

stevenage@homesandmortgages.co.uk



Energy Efficiency Rating

	Current	Potential
Very energy efficient - lower running costs		
(92 plus) A		
(81-91) B		
(69-80) C	69	73
(55-68) D		
(39-54) E		
(21-38) F		
(1-20) G		
Not energy efficient - higher running costs		

England & Wales EU Directive 2002/91/EC