



East Lane, SE16

£549,000

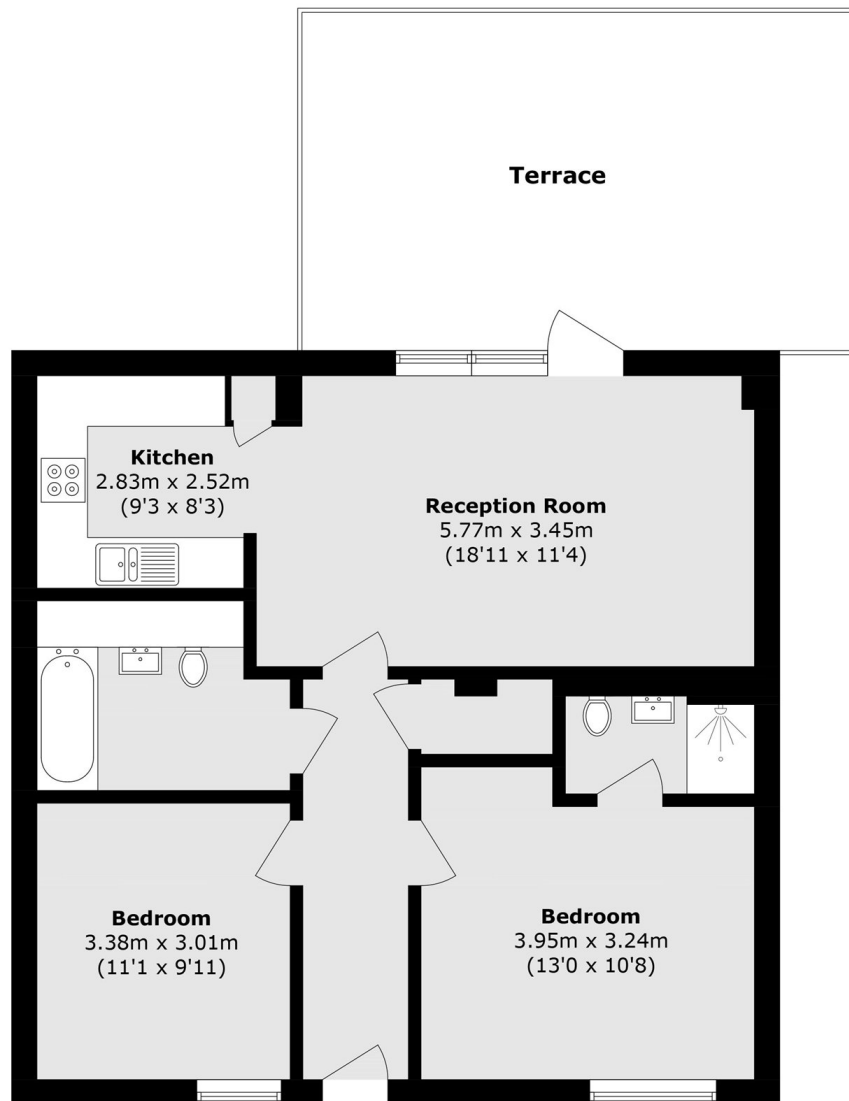
Offering a private terrace, this two double bedroom flat is immaculately presented and has a large open plan kitchen living space, modern bathroom, porter facilities and is being sold chain free.

Meridian Court is perfectly located moments from the river and is surrounded by shops, restaurants and cafés. Bermondsey station is just 0.3 miles away and London Bridge station is 0.6 miles away offering fantastic transport links.

Features

- Two Double Bedrooms
- Private Terrace
- Chain Free
- Fantastic Condition
- Long Lease
- Riverside Location

East Lane, London, SE16



Total area (approx.): 70.9 sq. m (763.1 sq. ft)
Terrace area (approx.): 26.3 sq. m (283.0 sq. ft)