



26 Follett Street, London, E14 6LQ

£450 Per Week

A spacious 2 double bedroom 2 bathroom flat for rent within short walking distance of All Saints DLR station.

Situated on the first floor of this small modern gated block, comprising of a bright and airy open plan living room with floor to ceiling windows, fitted kitchen with breakfast bar, double bedrooms, fitted wardrobes and en suite shower room to master and a further second bathroom.

Follett Street is an excellent location, being opposite Westferry DLR station and very a short walk into Canary Wharf.

A host of shops, supermarkets and bus stops on your doorstep.

Comes furnished.

PROPERTY AVAILABLE FROM NOW.

- 2 Double bedrooms
- Fitted kitchen
- Walk into Canary Wharf
- 2 Bathrooms
- Available From Now
- Comes Furnished
- By All Saints DLR station
- Small gated block
- 1st Floor

26 Follett Street, London, E14 6LQ

RECEPTION ROOM

RECEPTION ROOM

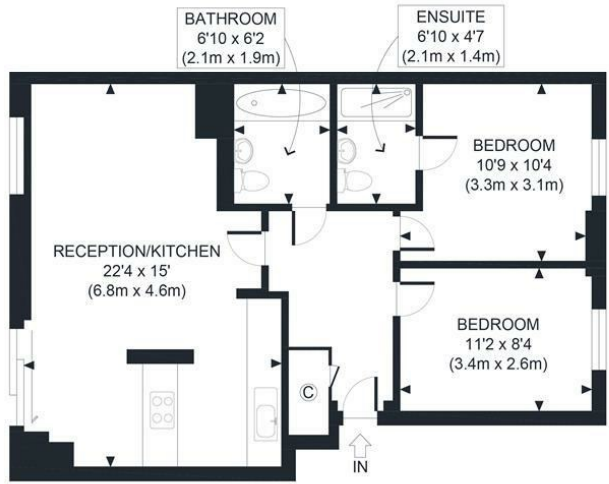
BATHROOM

KITCHEN

BEDROOM

BEDROOM

ENTRANCE

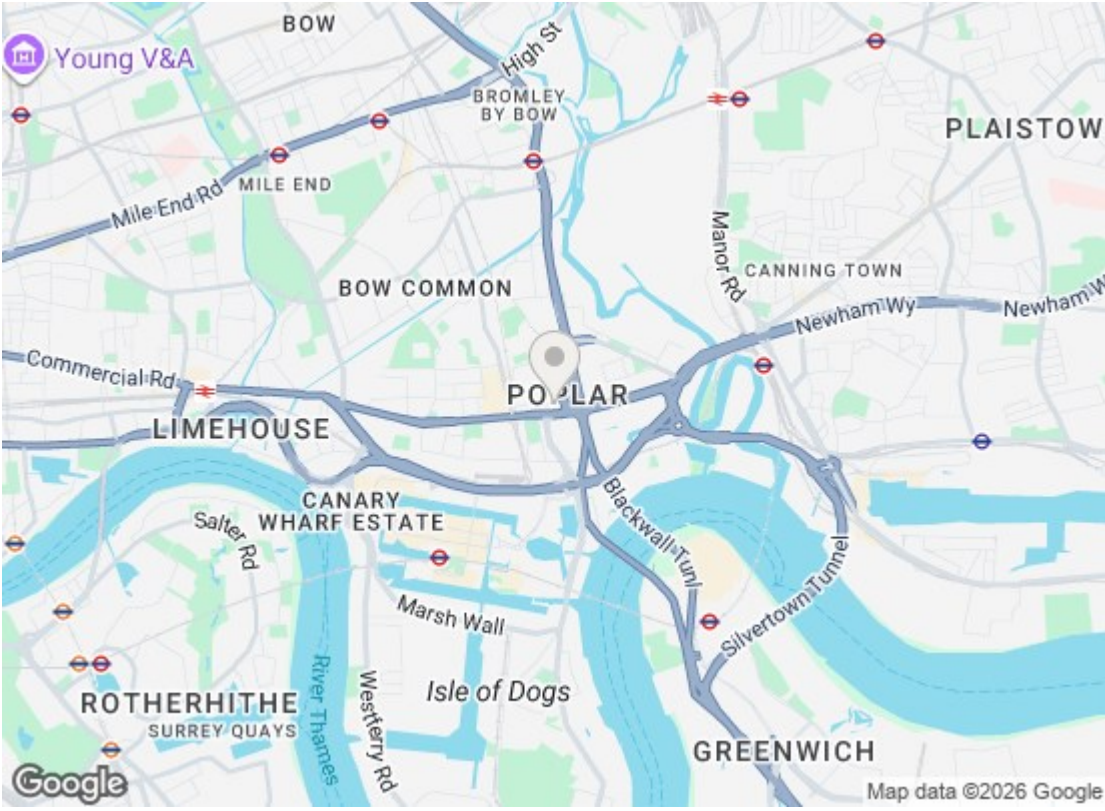


FIRST FLOOR
GROSS INTERNAL
FLOOR AREA 684 SQ FT

APPROX. GROSS INTERNAL FLOOR AREA 684 SQ FT / 64 SQM

Ref: Copyright **photoplan**

Disclaimer: Floor plan measurements are approximate and are for illustrative purposes only. While we do not doubt the floor plan accuracy and completeness, you or your advisors should conduct a careful, independent investigation of the property in respect of monetary valuation



Energy Efficiency Rating		
	Current	Potential
Very energy efficient - lower running costs		
(92 plus) A		
(81-91) B		
(69-80) C		
(55-68) D		
(39-54) E	44	45
(21-38) F		
(1-20) G		
Not energy efficient - higher running costs		
England & Wales		EU Directive 2002/91/EC
Environmental Impact (CO ₂) Rating		
	Current	Potential
Very environmentally friendly - lower CO ₂ emissions		
(92 plus) A		
(81-91) B		
(69-80) C		
(55-68) D		
(39-54) E		
(21-38) F		
(1-20) G		
Not environmentally friendly - higher CO ₂ emissions		
England & Wales		EU Directive 2002/91/EC

We have prepared these property particulars as a general guide to a broad description of the property. They are not intended to constitute part of an offer or contract. We have not carried out a structural survey and the services, appliances and specific fittings have not been tested. All photographs, measurements, floorplans and distances referred to are given as a guide only and should not be relied upon for the purchase of carpets or any other fixtures or fittings. Lease details, service charges and ground rent (where applicable) and council tax are given as a guide only and should be checked and confirmed by your Solicitor prior to exchange of contracts.