



## Woodsford Square, W14

£1,730 per week



- Five Bedrooms
- Five Bathrooms

- Spacious Family Home
- Private Garden

- Unfurnished
- Garage









## ABOUT THE PROPERTY

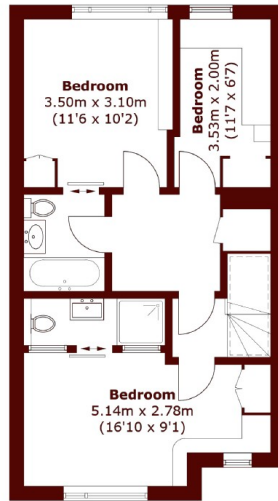
This large five-bedroom family home is set within a popular private residential enclave and offers over 2,200 sqft of space across four floors.

The property includes five bathrooms, two reception rooms, and a spacious open-plan kitchen with integrated appliances. Recently refurbished, the kitchen and wooden flooring throughout give a clean, modern finish. Outside, there is a private garden as well as access to shared communal gardens. A large garage provides useful storage. Well laid out and finished to a high standard, this is a practical and well-presented home ideal for families.

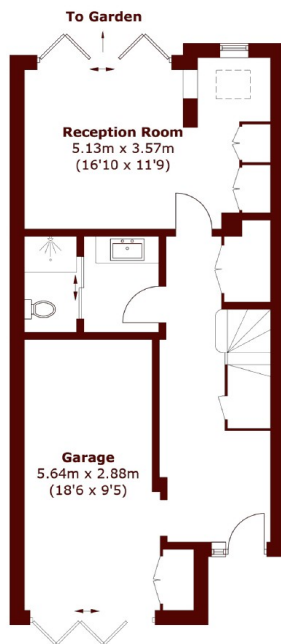


Woodsford Square, W14, is a prestigious private square in Holland Park, offering excellent transport links. Holland Park (Central line) and Notting Hill Gate (Central, Circle and District lines) stations are within a 10-minute walk, with Kensington (Olympia Overground) also nearby. The area boasts proximity to upscale destinations like Westfield London, Notting Hill, and High Street Kensington. Residents enjoy access to communal gardens and a peaceful, well-connected neighbourhood Council Tax Band - H

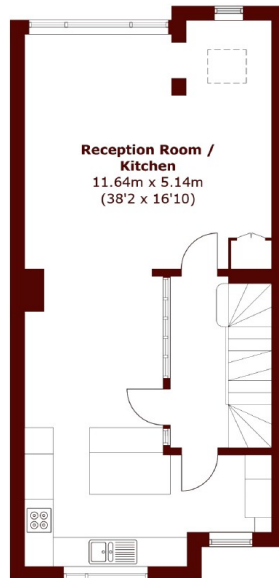




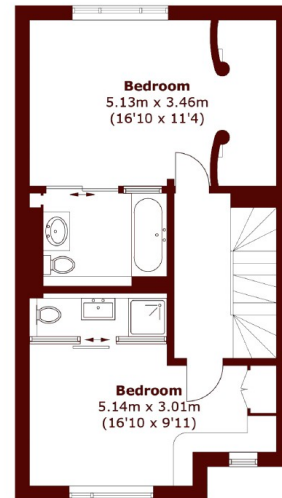
**Third Floor**



**Ground Floor**



**First Floor**



**Second Floor**

Total area (approx.): 210.4 sq. m (2,264.7 sq. ft)

## Marsh & Parsons Holland Park

57 Norland Square, London,  
W11 4QJ  
020 7605 6890

We aim to make our particulars both accurate and reliable. However, they are not guaranteed; nor do they form part of an offer or contract. If you require clarification on any points then please contact us, especially if you're traveling some distance to view. Please note that appliances and heating systems have not been tested and therefore no warranties can be given as to their good working order.