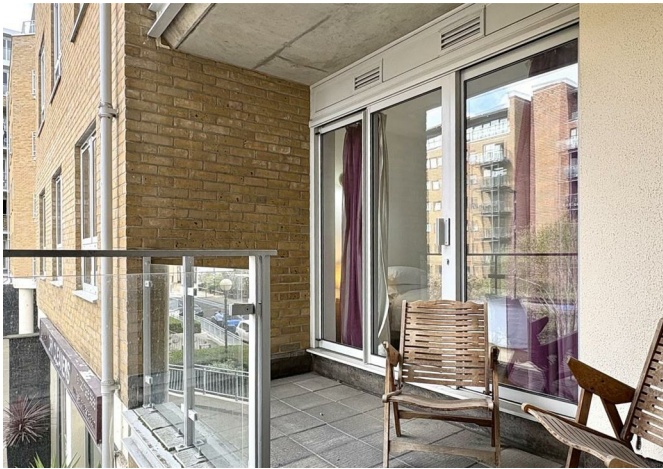




45 Narrow Street, London, E14 8DW

£2,500 Per month



45 Narrow Street, London, E14 8DW

£2,500 Per month

LONG LET - Nestled in the vibrant heart of London, this charming apartment on Narrow Street offers a perfect blend of comfort and convenience. The property features a well-appointed reception room that serves as an inviting space for relaxation and entertainment. The apartment boasts two spacious bedrooms and two bathrooms, thoughtfully designed, ensuring that both functionality and style are at the forefront.

One of the standout features of this property is its prime location. Situated close to the station, residents will enjoy easy access to public transport, making commuting and exploring the city a breeze.

This apartment is ideal for those seeking a modern living space in a bustling urban environment. Whether you are a young professional, a couple, or a small family, this property presents an excellent opportunity to experience the best of London living. Don't miss the chance to make this delightful apartment your new home.

Key Features

- Stunning two bedroom apartment, two main bathrooms
- Private balcony
- Secure entry and concierge
- Generous large bedrooms
- Set in an excellent location
- Close to local amenities
- Moments away from Limehouse DLR Station
- Easy access to Canary Wharf and Bank
- PArking available via seprate negotiation

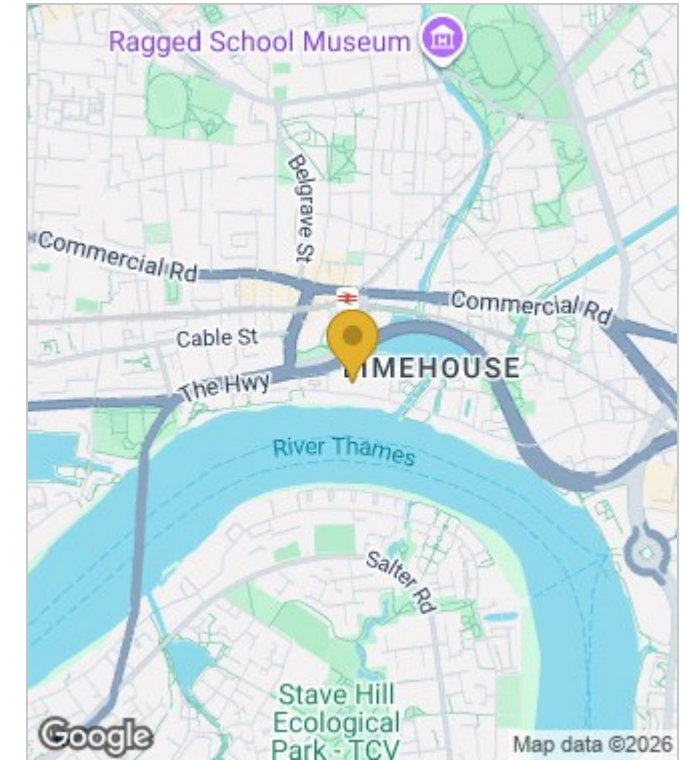


Council Tax Band: E

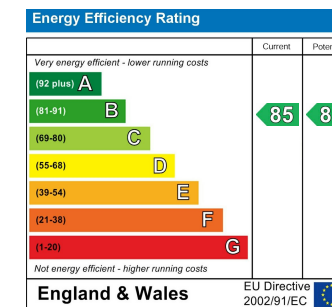
Floor Plans



Area Map



Energy Performance Graph



These particulars, whilst believed to be accurate are set out as a general outline only for guidance and do not constitute any part of an offer or contract. Intending purchasers should not rely on them as statements of representation of fact, but must satisfy themselves by inspection or otherwise as to their accuracy. No person in this firm's employment has the authority to make or give any representation or warranty in respect of the property.