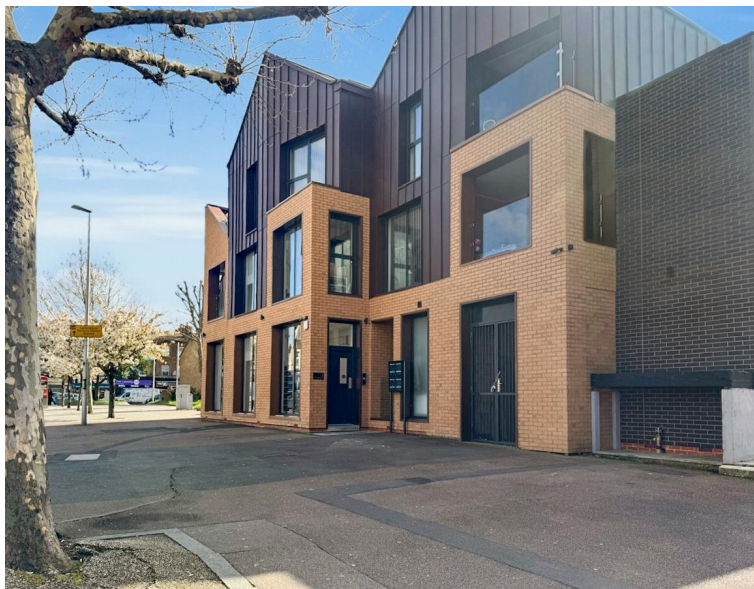


# Crownfield Road, London E15

Guide Price £2,100,000 Freehold







## Description

Perfectly positioned for modern city living, the property is situated near a wealth of local amenities and boasts exceptional transport links. Maryland Station (Elizabeth Line) is moments away, providing rapid access to the West End and Heathrow, while both Stratford Station (offering Central, Jubilee, DLR, Overground, and National Rail services) and the world-class retail and dining destination of Westfield Stratford City are just a short walk from the property. The nearby Queen Elizabeth Olympic Park also offers extensive green space and leisure facilities.

This turn-key investment generates a strong rental income, offering an impressive gross yield of 5.5%. With sustained tenant demand in the area driven by its connectivity and ongoing regeneration, this represents a secure and high-performing addition to any property portfolio.

For further information and to discuss this exclusive opportunity in more detail, please contact us directly.

- Freehold Investment Opportunity
- Entire Block of Four Apartments
- Impressive Gross Yield of 5.5%
- Prime Location Close to Amenities
- Moments from Maryland Station (Elizabeth Line)
- Walking Distance to Stratford Station and Westfield
- Close Proximity to the Queen Elizabeth Olympic Park
- High Tenant Demand in a Key Regeneration Area