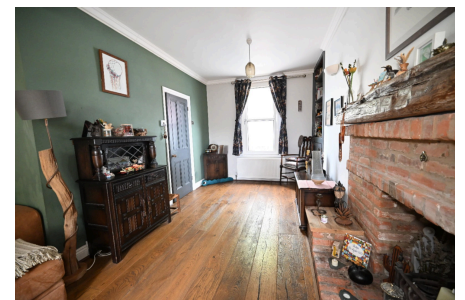


Cambridge Road, Rochester, ME2 3HW

Guide Price £260,000 - £280,000

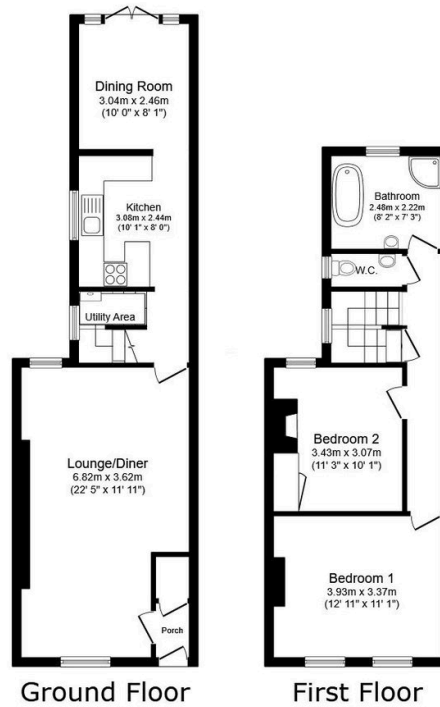
2 1 2



CALL TO BOOK YOUR VIEWING. Guide Price £260,000 - £280,000. This charming two bedroom Victorian home is bursting with character and rustic country style decoration throughout. This property is the perfect opportunity to get on the property ladder offering spacious living and a separate kitchen and dining area as well as plenty of storage. The location is ideal being within walking distance to the Strood town centre and train station too. Call to arrange your viewing **QUOTE AP0490**

Key Features

- 2 Bedroom Victorian Terrace Home
- Ideal First Time Buy
- Upstairs Bathroom With Separate Bath And Shower
- Character Features Throughout
- Separate Dining Room
- Private Rear Garden
- Walking Distance To The Town Centre With High Speed Train
- Easy Access To A2/M2
- Tenure Freehold / Council Tax Band B
- QUOTE AP0490



Total floor area: 89.9 sq.m. (968 sq.ft.)

This floor plan is for illustrative purposes only. It is not drawn to scale. Any measurements, floor areas (including any total floor area), openings and orientations are approximate. No details are guaranteed, they cannot be relied upon for any purpose and do not form any part of any agreement. No liability is taken for any error, omission or misstatement. A party must rely upon its own inspection(s). Powered by www.Propertybox.io