



29 Bromley Court, Copthorne Road, Shrewsbury, SY3 8NY
£925 Per Month



29 Bromley Court, Copthorne Road, Shrewsbury, SY3 8NY

£925 Per Month

Well presented first floor two-bedroom apartment situated within an attractive purpose-built development, ideally located just a short walk from Quarry Park, Shrewsbury town centre and Royal Shrewsbury Hospital. The property benefits from an allocated secure car parking space and access to professionally maintained communal gardens.

Available: 01/05/26

Description

Comprising: Communal entrance with staircase and lift access to the first floor, inner hallway with two built-in store cupboards and video entry system, open plan living/dining room with a feature bay window providing a pleasant outlook to the front, separate kitchen with integrated oven & hob, master bedroom with en-suite shower room, further double bedroom and family bathroom. Double glazing, electric heating. Landscaped communal gardens which are mainly lawned with paved seating areas, secure underground car park providing allocated parking and storage area. EPC C



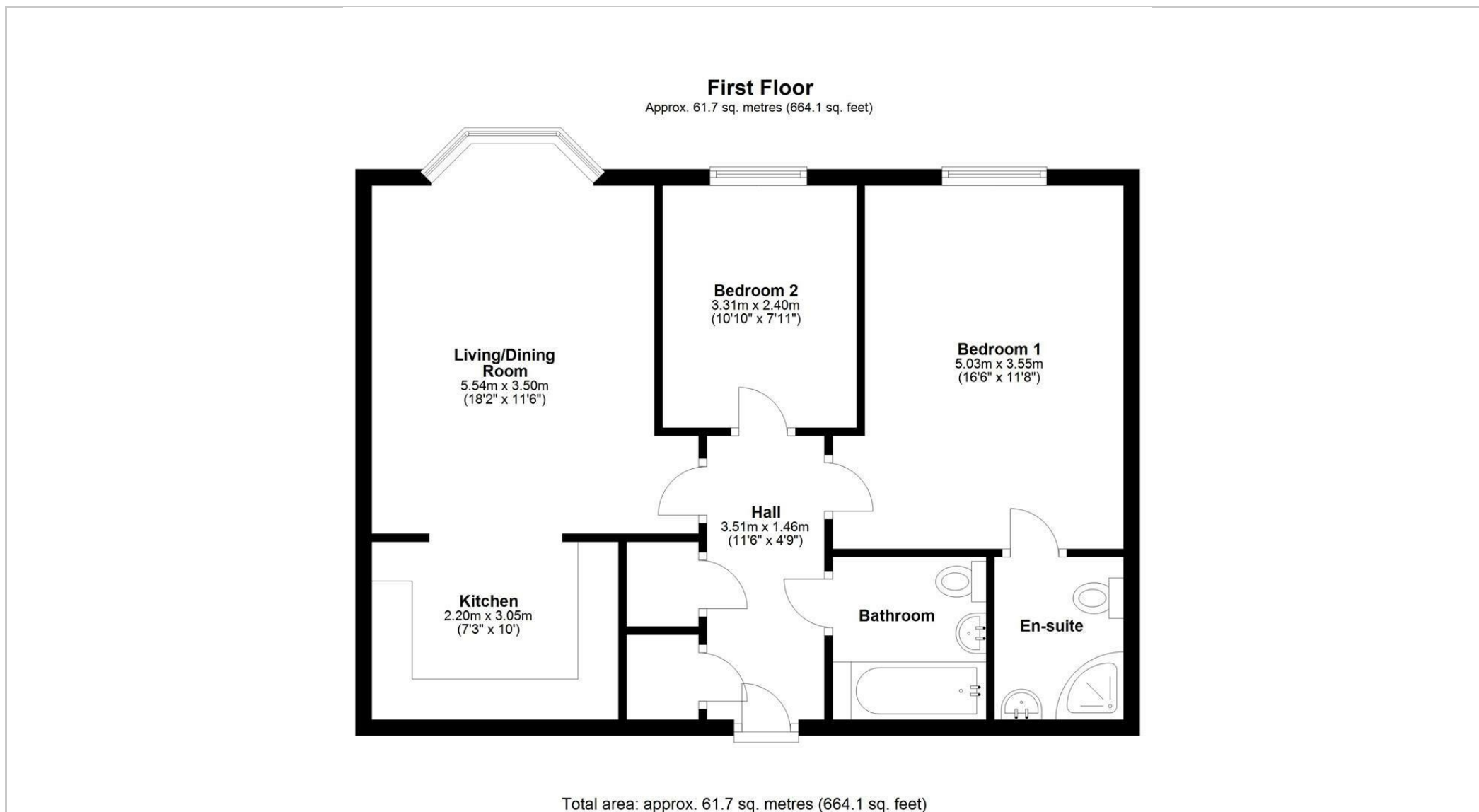
Unfurnished

Council Tax Band: B

Available: 1st May 2026

EPC: C

Floor Plans



These particulars, whilst believed to be accurate are set out as a general outline only for guidance and do not constitute any part of an offer or contract. Intending purchasers should not rely on them as statements of representation of fact, but must satisfy themselves by inspection or otherwise as to their accuracy. No person in this firm's employment has the authority to make or give any representation or warranty in respect of the property.