

FULHAM ROAD, SW6

£449,950

Leasehold



1



1



1



D

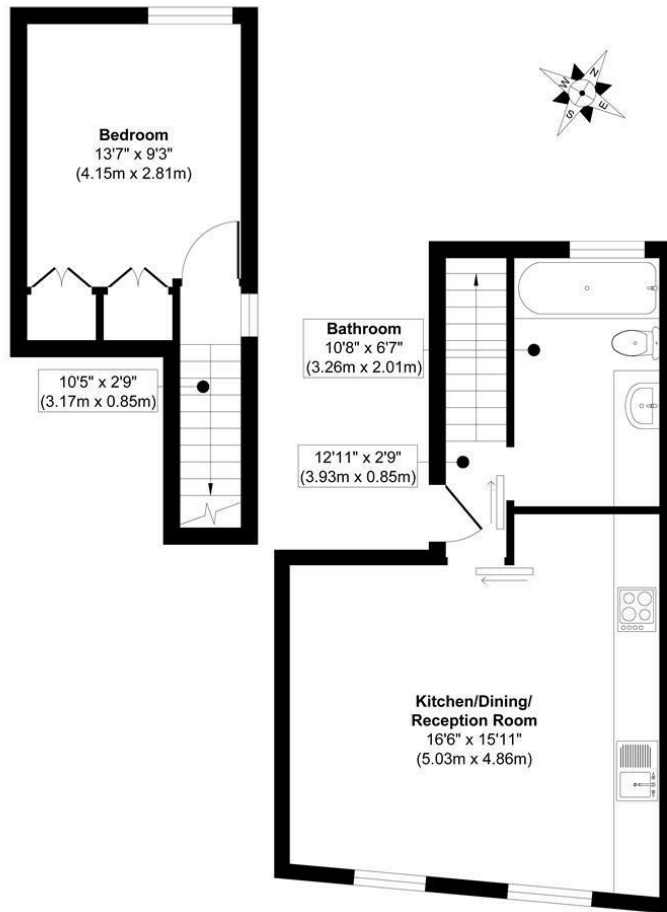
PROPERTY FEATURES

- Recently Refurbished
- Large One Bedroom
- Second Floor
- Close To Amenities & Transport



PROPERTY FEATURES

This delightful one-bedroom apartment offers a perfect blend of modern living and convenience. Refurbished in 2023, the property boasts a contemporary design and is well presented throughout, featuring high-quality appliances that cater to a comfortable lifestyle.



First Floor
 Approximate Floor Area
 146 sq. ft
 (13.63 sq. m)

Second Floor
 Approximate Floor Area
 338 sq. ft
 (31.44 sq. m)

Approx. Gross Internal Floor Area 517 sq. ft / 48.03 sq. m

Illustration for identification purposes only, measurements are approximate, not to scale.
 Produced by Elements Property



©ALEXANDERSTEERPROPERTY



**ALEXANDER
 STEER**

0203 822 0111
 hello@alexandersteer.co.uk
 158a Shepherds Bush Road, Hammersmith, London,
 W6 7PB

All sizes are approximate. The Agent has not tested any apparatus, equipment, fixtures and fittings, or services and so cannot verify that they are in working order or fit for the purpose. A buyer is advised to obtain verification from their Solicitors or Surveyor. Photographs are for illustration purposes only and may depict items, which are not for sale or included in the sale price. References to tenure of a property are based upon Information supplied by the vendor. The agent has not had sight of the title documents, a buyer is advised to obtain verification from their solicitor.

Money Laundering Regulations 2003: Intending purchasers will be asked to produce identification, documentation at a later stage and we would ask for your co-operation in order that there will be no delay in agreeing the sale. These particulars are intended to give a fair description of the property only and are in no way guaranteed, nor do of any contract. They are issued on the express condition that all negotiations are conducted through Alexander Steer Estate Agents. All subject to contract and to being unsold.