



Connells

Broome Way
Banbury

Broome Way
Banbury OX16 3WQ

for sale offers in excess of
£175,000



Property Description

Connells Estate Agents are delighted to present this spacious two bedroom apartment located within close proximity to Banbury Train Station and Banbury Town Centre.

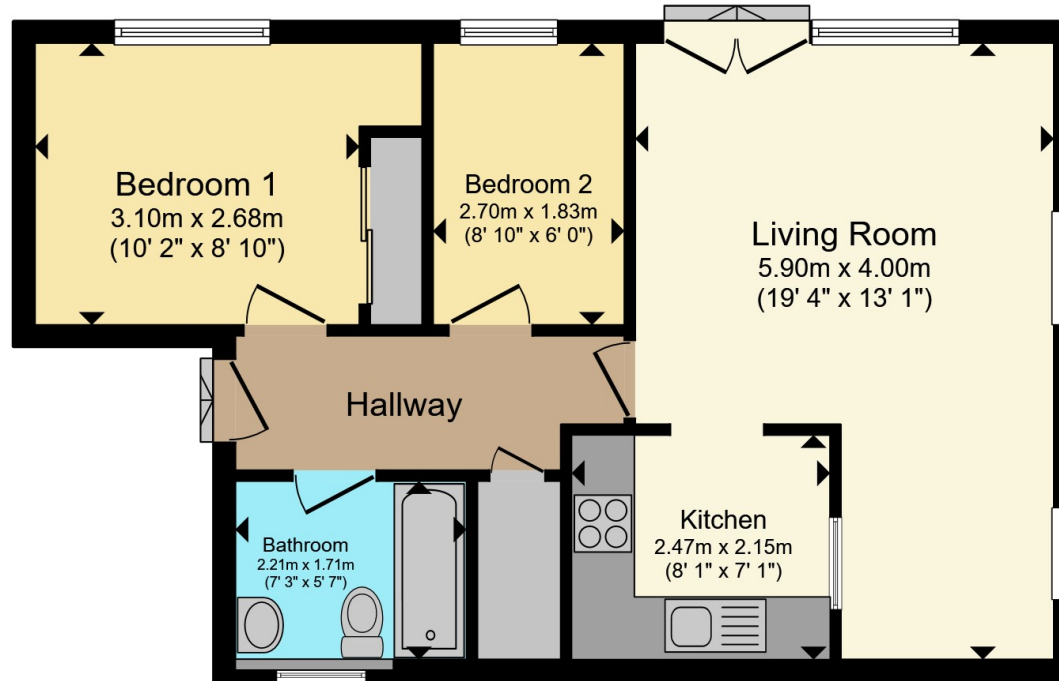
The spacious lounge is a standout feature—bright and airy, with ample room for both living and dining furniture. A charming Juliette balcony brings in plenty of natural light, creating an inviting space to relax or entertain. From the lounge, there is a kitchen making this a great social space for entertaining.

Furthermore, there are two bedrooms including a spacious master bedroom. The bathroom completes the accommodation with a stunning three piece suite.

Lastly, there are two allocated parking spaces.







Floor Plan

Total floor area 51.4 m² (554 sq.ft.) approx

This floor plan is for illustrative purposes only. It is not drawn to scale. Any measurements, floor areas (including any total floor area), openings and orientation are approximate. No details are guaranteed, they cannot be relied upon for any purpose and they do not form part of any agreement. No liability is taken for any error, omission or misstatement. A party must rely upon its own inspection(s). Powered by www.propertybox.io

Connells

To view this property please contact Connells on

T 01295 268 101
E banbury@connells.co.uk

33 Bridge Street
 BANBURY OX16 5PN

This is a Leasehold property. We are awaiting further details about the Term of the lease. For further information please contact the branch. Please note additional fees could be incurred for items such as Leasehold packs.

