



Lynt Road, Inglesham, SN6 7QX

£465,000
(Subject to Contract)

Hanley's

Lynt Road Inglesham SN6 7QX

An impressive three/four bedroom semi detached property set on a generous plot backing onto open fields. The property has been extended and provides spacious accommodation in excess of 1800 sq. ft. which comprises: Entrance porch with storage cupboards, hallway, dual aspect living room with French doors opening onto the rear garden, dual aspect family room, kitchen/breakfast room, utility room with external door to the rear, dining room/bedroom four with French doors opening to the rear garden and ground floor bathroom with bath and separate shower cubicle. To the first floor is a spacious landing with eaves storage cupboard, three double bedrooms and bathroom with bath and mixer tap shower over. The property also benefits from gas radiator central heating and double glazing. Outside to the front is a block paved driveway providing parking for several vehicles with gated pedestrian access and pathway to the road. Side access leads to the Westerly facing rear garden with full width patio area, summer house/shed and steps leading down to an area laid to lawn with established hedges to both sides and a selection of mature trees. The property is offered for sale with no onward chain.

The vendor is currently awaiting the grant of probate. Exchange and completion cannot take place until probate has been issued.



2 Bathrooms



3/4 Bedrooms



2/3 Receptions

EPC: TBA

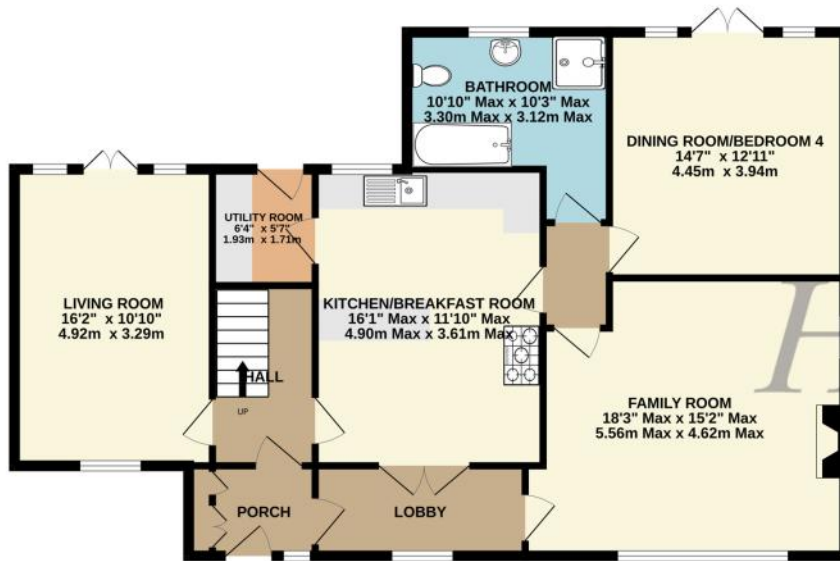
Council Tax Band: E

Tenure: Freehold



DISCLAIMER. These particulars, whilst believed to be accurate are set out as a general outline for guidance and do not constitute any part of an offer or contract. Intending purchasers should not rely on them as statements or representation of fact, but must satisfy themselves by inspection or otherwise as to their accuracy. No person in this firm's employment has the authority to make or give any representation or warranty in respect of the property. Floor plan measurements and distances are approximate only. We have not carried out a detailed survey nor tested the services, appliances or specific fittings. Your home is at risk if you do not keep up repayments on a mortgage or other loan secured on it.

GROUND FLOOR
1080 sq.ft. (100.4 sq.m.) approx.



1ST FLOOR
804 sq.ft. (74.7 sq.m.) approx.



TOTAL FLOOR AREA : 1885 sq.ft. (175.1 sq.m.) approx.

Whilst every attempt has been made to ensure the accuracy of the floorplan contained here, measurements of doors, windows, rooms and any other items are approximate and no responsibility is taken for any error, omission or mis-statement. This plan is for illustrative purposes only and should be used as such by any prospective purchaser. The services, systems and appliances shown have not been tested and no guarantee as to their operability or efficiency can be given.
Made with Metropix ©2026

