



Eaton Rise, W5

£775,000

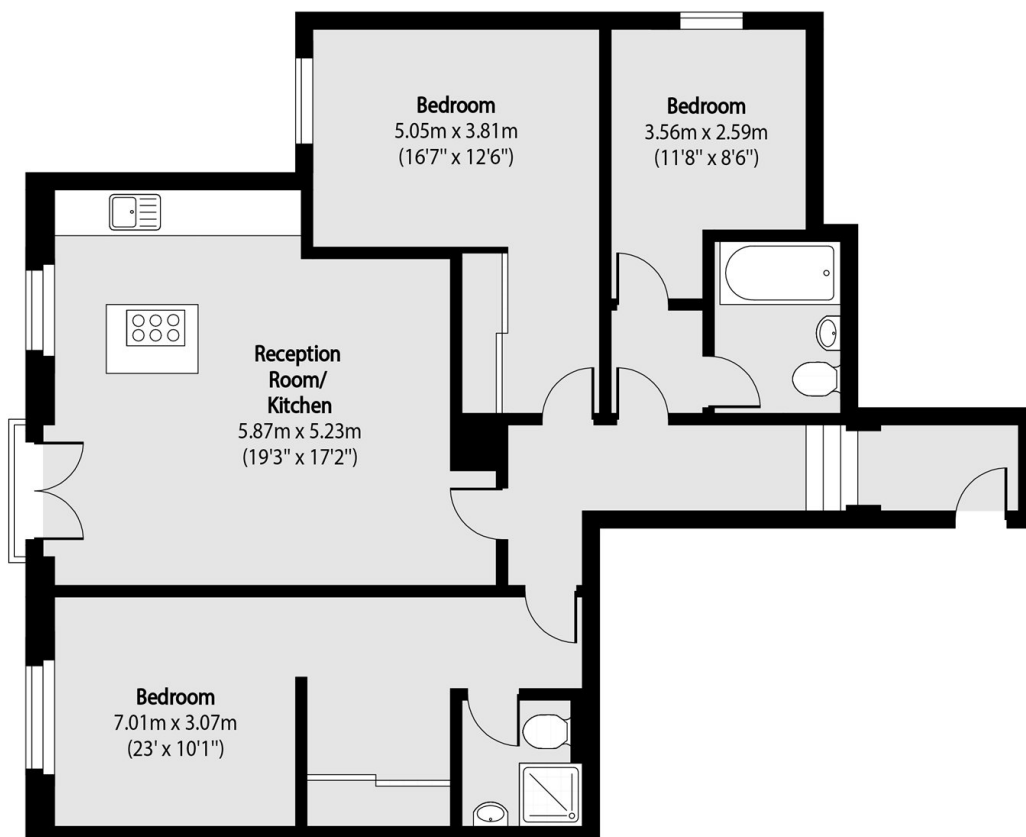
Built in 2018 and one of just 10 apartments, this ground-floor flat is in excellent condition and easy to love. There's around 975 sq ft of well-used space with three bedrooms, two modern bathrooms and direct access out to the garden, complete with a gym. It's practical, comfortable and ready to move straight into, with allocated parking and a long lease adding peace of mind.

Located on Eaton Rise, you're in a quiet, leafy part of Ealing with everything close by. Cafés, shops and green spaces are within easy reach, and Ealing Broadway makes getting around simple. It's the kind of place where daily life feels relaxed and convenient.

Features

- Built in 2018
- Ground-Floor
- Direct Garden Access
- Three Bedrooms
- Two Bathrooms
- Allocated Parking Space

Eaton Rise, London, W5



Total area (approx): 90.58 sq m (975 sq. ft)